

## Product datasheet

# anti-Cetuximab ELISA Kit ab237660

1 Image

### Overview

**Product name** anti-Cetuximab ELISA Kit

**Detection method** Colorimetric

**Precision**

Intra-assay

Sample	n	Mean	SD	CV%
Overall				< 15%

Inter-assay

Sample	n	Mean	SD	CV%
Overall				< 15%

**Sample type** Serum, Plasma

**Assay type** Sandwich (quantitative)

**Sensitivity** 30 ng/ml

**Range** 62 ng/ml - 500 ng/ml

**Recovery**

Sample specific recovery

Sample type	Average %	Range
Serum		85% - 115%

**Assay duration** Multiple steps standard assay

**Species reactivity** **Reacts with:** Human

**Product overview** anti-Cetuximab ELISA Kit (ab237660) is designed to quantify/measure the antibody against Cetuximab with high specificity and sensitivity in biological matrices.

**Platform** Microplate

### Properties

**Storage instructions** Store at +4°C. Please refer to protocols.

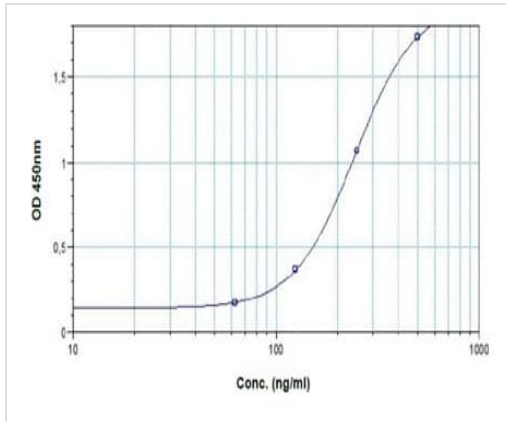
Components	96 tests
Micro ELISA Plate	1 unit
Cetuximab Standard 1	1 x 1ml
Cetuximab Standard 2	1 x 1ml
Cetuximab Standard 3	1 x 1ml
Cetuximab Standard 4	1 x 1ml
Cetuximab Standard 5	1 x 1ml
Cetuximab Standard 6	1 x 1ml
Cetuximab Standard 7	1 x 1ml
Assay Buffer	1 x 50ml
Confirmation Reagent	1 x 12ml
Peroxidase Conjugate	1 x 12ml
TMB substrate	1 x 12ml
Stop Solution	1 x 12ml
Wash buffer (20X)	1 x 50ml
Plate sealers	1 x 2 units

## Relevance

Cetuximab is a chimeric monoclonal antibody of the immunoglobulin G1 (IgG1) and FDA-approved epidermal growth factor receptor (EGFR) inhibitor. Preclinical studies have shown that cetuximab enhances the antitumour effects of chemotherapy as well as radiotherapy by inhibiting cell proliferation, angiogenesis and metastasis and by promoting apoptosis is used for the treatment of metastatic colorectal cancer, metastatic non-small cell lung cancer and head and neck cancer. Cetuximab blocks growth factor-induced activation of the downstream mitogen-activated protein kinase, inhibiting cell proliferation. It also decreases angiogenic factors, inhibits tumor-cell invasion and metastasis via downregulation of matrix metalloproteinases (MMPs) and VEGF, and promotes apoptosis by upregulating apoptotic protein, Bax, with the help of other chemotherapeutic agents.

## Images

---



**Typical Standard Curve:** This standard curve is for demonstration only. A standard curve must be run with each assay.

Typical standard curve.

**Please note:** All products are "FOR RESEARCH USE ONLY. NOT FOR USE IN DIAGNOSTIC PROCEDURES"

### Our Abpromise to you: Quality guaranteed and expert technical support

---

- Replacement or refund for products not performing as stated on the datasheet
- Valid for 12 months from date of delivery
- Response to your inquiry within 24 hours
- We provide support in Chinese, English, French, German, Japanese and Spanish
- Extensive multi-media technical resources to help you
- We investigate all quality concerns to ensure our products perform to the highest standards

If the product does not perform as described on this datasheet, we will offer a refund or replacement. For full details of the Abpromise, please visit <https://www.abcam.com/abpromise> or contact our technical team.

### Terms and conditions

---

- Guarantee only valid for products bought direct from Abcam or one of our authorized distributors