



Product datasheet

Anti-CGGBP1 antibody - N-terminal ab224497

4 Images

Overview

Product name	Anti-CGGBP1 antibody - N-terminal
Description	Rabbit polyclonal to CGGBP1 - N-terminal
Host species	Rabbit
Tested applications	Suitable for: IHC-P, ICC/IF, WB
Species reactivity	Reacts with: Mouse, Rat, Human
Immunogen	<p>Recombinant fragment corresponding to Human CGGBP1 aa 1-81 (N terminal). Sequence:</p> <p>MERFVVTAPPARNRSKTALYVTPLDREVTEFGGELHEDGG KLFCTSCNVVL NHVRKSAISDHLKSKTHTKRKAEFEEQNVRK</p> <p>Database link: Q9UFW8</p> <p style="text-align: right;">  Run BLAST with  Run BLAST with </p>
Positive control	IHC-P: Human placenta tissue. WB: RT4, U-251 MG sp, NIH/3T3 and NBT-II cell lysates. IHC-P: U-2 OS cells.
General notes	<p>Reproducibility is key to advancing scientific discovery and accelerating scientists' next breakthrough.</p> <p>Abcam is leading the way with our range of recombinant antibodies, knockout-validated antibodies and knockout cell lines, all of which support improved reproducibility.</p> <p>We are also planning to innovate the way in which we present recommended applications and species on our product datasheets, so that only applications & species that have been tested in our own labs, our suppliers or by selected trusted collaborators are covered by our Abpromise™ guarantee.</p> <p>In preparation for this, we have started to update the applications & species that this product is Abpromise guaranteed for.</p> <p>We are also updating the applications & species that this product has been “predicted to work with,” however this information is not covered by our Abpromise guarantee.</p> <p>Applications & species from publications and Abreviews that have not been tested in our own labs or in those of our suppliers are not covered by the Abpromise guarantee.</p> <p>Please check that this product meets your needs before purchasing. If you have any questions, special requirements or concerns, please send us an inquiry and/or contact our Support team ahead of purchase. Recommended alternatives for this product can be found below, as well as</p>

customer reviews and Q&As.

Properties

Form	Liquid
Storage instructions	Shipped at 4°C. Store at +4°C short term (1-2 weeks). Upon delivery aliquot. Store at -20°C long term. Avoid freeze / thaw cycle.
Storage buffer	pH: 7.20 Preservative: 0.02% Sodium azide Constituents: 40% Glycerol (glycerin, glycerine), PBS
Purity	Immunogen affinity purified
Clonality	Polyclonal
Isotype	IgG

Applications

Our [Abpromise guarantee](#) covers the use of **ab224497** in the following tested applications.

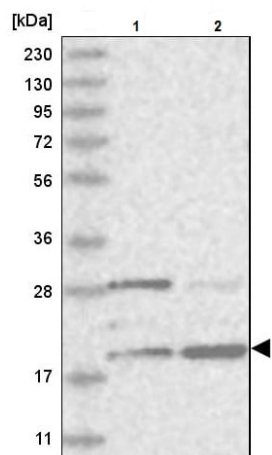
The application notes include recommended starting dilutions; optimal dilutions/concentrations should be determined by the end user.

Application	Abreviews	Notes
IHC-P		1/200 - 1/500. Perform heat mediated antigen retrieval with citrate buffer pH 6 before commencing with IHC staining protocol.
ICC/IF		Use a concentration of 0.25 - 2 µg/ml. Fixation/Permeabilization: PFA/Triton X-100.
WB		Use a concentration of 0.04 - 0.4 µg/ml. Predicted molecular weight: 19 kDa.

Target

Function	Binds to nonmethylated 5'-d(CGG)(n)-3' trinucleotide repeats in the FMR1 promoter. May play a role in regulating FMR1 promoter.
Tissue specificity	Ubiquitous. Highly expressed in placenta, thymus, lymph nodes, cerebellum and cerebral cortex. Low expression in other regions of the brain.
Developmental stage	Expressed in fetal brain and kidney. Lower expression in fetal liver and lung.
Post-translational modifications	Phosphorylated upon DNA damage, probably by ATM or ATR.
Cellular localization	Nucleus.

Images



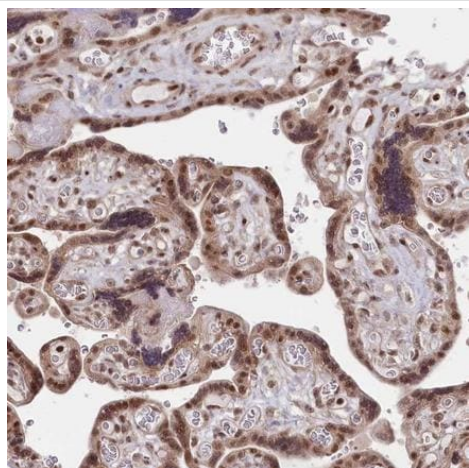
Western blot - Anti-CGGBP1 antibody - N-terminal (ab224497)

All lanes : Anti-CGGBP1 antibody - N-terminal (ab224497) at 1/100 dilution

Lane 1 : RT4 (human urinary bladder cancer cell line) cell lysate

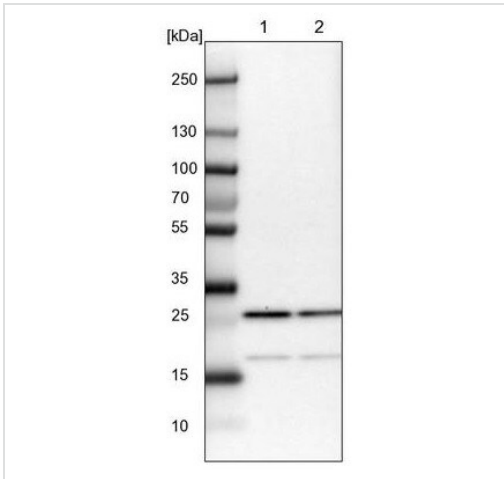
Lane 2 : U-251 MG sp (human brain glioma cell line) cell lysate

Predicted band size: 19 kDa



Immunohistochemistry (Formalin/PFA-fixed paraffin-embedded sections) - Anti-CGGBP1 antibody - N-terminal (ab224497)

Paraffin-embedded human placenta tissue stained for CGGBP1 using ab224497 at 1/200 dilution in immunohistochemical analysis.



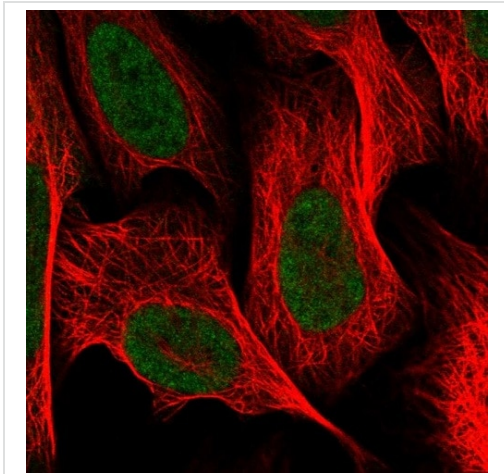
Western blot - Anti-CGGBP1 antibody - N-terminal (ab224497)

All lanes : Anti-CGGBP1 antibody - N-terminal (ab224497) at 1/100 dilution

Lane 1 : NIH/3T3 (mouse embryo fibroblast cell line) cell lysate

Lane 2 : NBT-II cell lysate

Predicted band size: 19 kDa



Immunocytochemistry/ Immunofluorescence - Anti-CGGBP1 antibody - N-terminal (ab224497)

PFA-fixed, Triton X-100 permeabilized U-2 OS (human bone osteosarcoma epithelial cell line) cells stained for CGGBP1 (green) using ab224497 at 4 µg/ml in ICC/IF.

Please note: All products are "FOR RESEARCH USE ONLY. NOT FOR USE IN DIAGNOSTIC PROCEDURES"

Our Abpromise to you: Quality guaranteed and expert technical support

- Replacement or refund for products not performing as stated on the datasheet
- Valid for 12 months from date of delivery
- Response to your inquiry within 24 hours
- We provide support in Chinese, English, French, German, Japanese and Spanish
- Extensive multi-media technical resources to help you
- We investigate all quality concerns to ensure our products perform to the highest standards

If the product does not perform as described on this datasheet, we will offer a refund or replacement. For full details of the Abpromise, please visit <https://www.abcam.com/abpromise> or contact our technical team.

Terms and conditions

- Guarantee only valid for products bought direct from Abcam or one of our authorized distributors