


Product datasheet

Anti-cGKII antibody ab196960

1 Image

Overview

Product name	Anti-cGKII antibody
Description	Rabbit polyclonal to cGKII
Host species	Rabbit
Tested applications	Suitable for: WB
Species reactivity	Reacts with: Human Predicted to work with: Mouse 
Immunogen	Synthetic peptide corresponding to Human cGKII. Synthesized non-phosphopeptide derived from Human cGKII around the phosphorylation site of serine 126 (G-V-S(p)-A-E). Database link: Q13237
Positive control	WB: Extracts from HEK-293 cells, treated with anisomycin.
General notes	<p>The Life Science industry has been in the grips of a reproducibility crisis for a number of years. Abcam is leading the way in addressing this with our range of recombinant monoclonal antibodies and knockout edited cell lines for gold-standard validation. Please check that this product meets your needs before purchasing.</p> <p>If you have any questions, special requirements or concerns, please send us an inquiry and/or contact our Support team ahead of purchase. Recommended alternatives for this product can be found below, along with publications, customer reviews and Q&As</p>

Properties

Form	Liquid
Storage instructions	Shipped at 4°C. Store at +4°C short term (1-2 weeks). Upon delivery aliquot. Store at -20°C long term. Avoid freeze / thaw cycle.
Storage buffer	pH: 7.40 Preservative: 0.02% Sodium azide Constituents: PBS, 50% Glycerol (glycerin, glycerine), 0.87% Sodium chloride PBS without Mg ²⁺ and Ca ²⁺ .
Purity	Immunogen affinity purified
Clonality	Polyclonal
Isotype	IgG

Applications

The Abpromise guarantee Our [Abpromise guarantee](#) covers the use of ab196960 in the following tested applications. The application notes include recommended starting dilutions; optimal dilutions/concentrations should be determined by the end user.

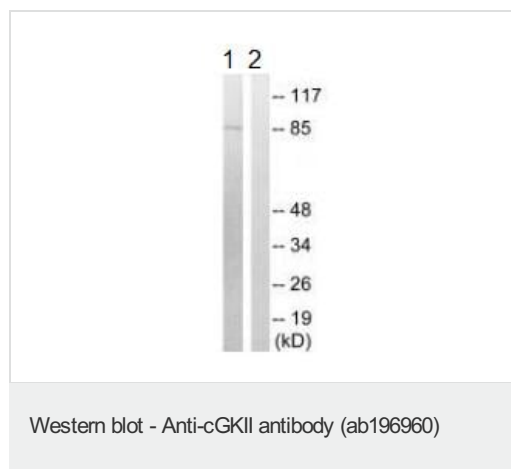
Application	Abreviews	Notes
WB		1/500 - 1/3000. Predicted molecular weight: 87 kDa.

Target

Tissue specificity Highly concentrated in brain, lung and intestinal mucosa.

Sequence similarities Belongs to the protein kinase superfamily. AGC Ser/Thr protein kinase family. cGMP subfamily. Contains 1 AGC-kinase C-terminal domain. Contains 2 cyclic nucleotide-binding domains. Contains 1 protein kinase domain.

Images



All lanes : Anti-cGKII antibody (ab196960) at 1/500 dilution

Lane 1 : HEK-293 cell extracts, treated with anisomycin (25ug/ml, 30mins)

Lane 2 : HEK-293 cell extracts, treated with anisomycin (25ug/ml, 30mins) with blocking peptide

Predicted band size: 87 kDa

Please note: All products are "FOR RESEARCH USE ONLY. NOT FOR USE IN DIAGNOSTIC PROCEDURES"

Our Abpromise to you: Quality guaranteed and expert technical support

- Replacement or refund for products not performing as stated on the datasheet
- Valid for 12 months from date of delivery
- Response to your inquiry within 24 hours
- We provide support in Chinese, English, French, German, Japanese and Spanish
- Extensive multi-media technical resources to help you
- We investigate all quality concerns to ensure our products perform to the highest standards

If the product does not perform as described on this datasheet, we will offer a refund or replacement. For full details of the Abpromise, please visit <https://www.abcam.com/abpromise> or contact our technical team.

Terms and conditions

- Guarantee only valid for products bought direct from Abcam or one of our authorized distributors