

Product datasheet

Anti-CHD1L antibody [2170C3a] ab51324

★★★★★ 2 Abreviews 5 References 3 Images

Overview

Product name	Anti-CHD1L antibody [2170C3a]
Description	Mouse monoclonal [2170C3a] to CHD1L
Host species	Mouse
Tested applications	Suitable for: WB, IP, Dot blot, IHC-P
Species reactivity	Reacts with: Mouse, Human
Immunogen	Recombinant human CHD1L fragment
Positive control	HEK293 whole cell lysate.
General notes	This product was changed from ascites to tissue culture supernatant on 9 th August 2018. Please note that the dilutions may need to be adjusted accordingly. If you have any questions, please do not hesitate to contact our scientific support team.

Properties

Form	Liquid
Storage instructions	Shipped at 4°C. Store at +4°C short term (1-2 weeks). Upon delivery aliquot. Store at -20°C long term.
Storage buffer	pH: 7.40 Preservative: 0.05% Sodium azide Constituents: 1% BSA, 0.03% Potassium phosphate, 0.812% Sodium chloride, 0.1312% Sodium phosphate, 0.0225% Potassium chloride, PBS
Purity	Protein G purified
Purification notes	Purified from TCS
Clonality	Monoclonal
Clone number	2170C3a
Isotype	IgG1

Applications

Our [Abpromise guarantee](#) covers the use of **ab51324** in the following tested applications.

The application notes include recommended starting dilutions; optimal dilutions/concentrations should be determined by the end user.

Application	Abreviews	Notes
WB	★★★★★	
IP		
Dot blot		
IHC-P		

Application notes

Dot: Use at an assay dependent dilution.
IHC-P: Use at an assay dependent dilution (PMID 20335658).
IP: Use at 10µg/mg RIPA lysate of HeLa cells.
WB: 1/50. Detects a band of approximately 101 kDa (predicted molecular weight: 101 kDa).

Not yet tested in other applications.
Optimal dilutions/concentrations should be determined by the end user.

Target

Function DNA helicase which plays a role in chromatin-remodeling following DNA damage. Targeted to sites of DNA damage through interaction with poly(ADP-ribose) and functions to regulate chromatin during DNA repair. Able to catalyze nucleosome sliding in an ATP-dependent manner. Helicase activity is strongly stimulated upon poly(ADP-ribose)-binding.

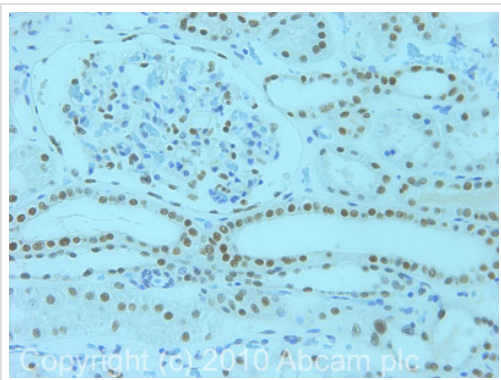
Tissue specificity Frequently overexpressed in hepatomacellular carcinomas.

Sequence similarities Belongs to the SNF2/RAD54 helicase family.
Contains 1 helicase ATP-binding domain.
Contains 1 helicase C-terminal domain.
Contains 1 Macro domain.

Domain The macro domain mediates non-covalent poly(ADP-ribose)-binding and recruitment to DNA damage sites.

Cellular localization Nucleus. Localizes at sites of DNA damage. Probably recruited to DNA damage sites by PARylated PARP1.

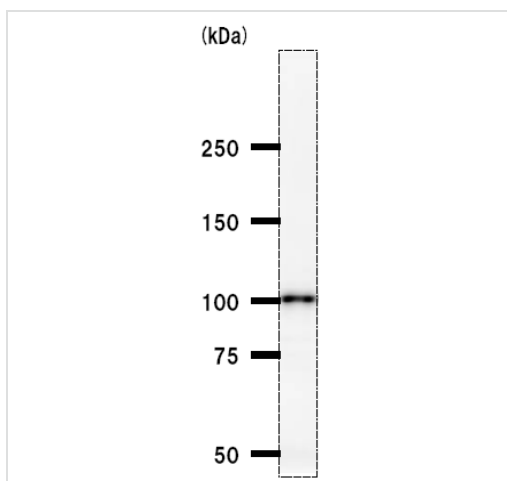
Images



Immunohistochemistry (Formalin/PFA-fixed paraffin-embedded sections) - Anti-CHD1L antibody [2170C3a] (ab51324)

IHC image of ab51324 staining in human kidney formalin fixed paraffin embedded tissue section, performed on a Leica Bond™ system using the standard protocol F. The section was pre-treated using heat mediated antigen retrieval with sodium citrate buffer (pH6, epitope retrieval solution 1) for 20 mins. The section was then incubated with ab51324, 5µg/ml, for 15 mins at room temperature and detected using an HRP conjugated compact polymer system. DAB was used as the chromogen. The section was then counterstained with haematoxylin and mounted with DPX.

For other IHC staining systems (automated and non-automated) customers should optimize variable parameters such as antigen retrieval conditions, primary antibody concentration and antibody incubation times.



Western blot - Anti-CHD1L antibody [2170C3a] (ab51324)

Anti-CHD1L antibody [2170C3a] (ab51324) at 1/50 dilution + HEK293 whole cell lysate at 25 µg

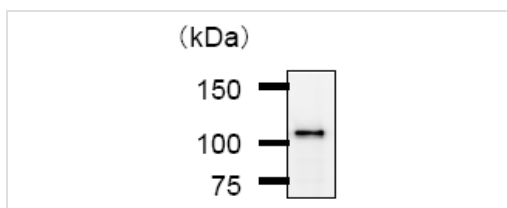
Secondary

anti-mouse IgG at 1/2500 dilution

Developed using the ECL technique.

Predicted band size: 101 kDa

Observed band size: 101 kDa



Immunoprecipitation - Anti-CHD1L antibody [2170C3a] (ab51324)

Immunoprecipitation analysis using ab51324 at 5ug/500ug RIPA lysate of HeLa cells. Immunoblot using ab51324 at 1/50 dilution and 1/2500 anti-mouse IgG as secondary.

Please note: All products are "FOR RESEARCH USE ONLY. NOT FOR USE IN DIAGNOSTIC PROCEDURES"

Our Abpromise to you: Quality guaranteed and expert technical support

- Replacement or refund for products not performing as stated on the datasheet
- Valid for 12 months from date of delivery
- Response to your inquiry within 24 hours

- We provide support in Chinese, English, French, German, Japanese and Spanish
- Extensive multi-media technical resources to help you
- We investigate all quality concerns to ensure our products perform to the highest standards

If the product does not perform as described on this datasheet, we will offer a refund or replacement. For full details of the Abpromise, please visit <https://www.abcam.com/abpromise> or contact our technical team.

Terms and conditions

- Guarantee only valid for products bought direct from Abcam or one of our authorized distributors