

Product datasheet

Anti-Chk1 antibody ab137400

3 Images

Overview

<b>Product name</b>	Anti-Chk1 antibody
<b>Description</b>	Rabbit polyclonal to Chk1
<b>Host species</b>	Rabbit
<b>Tested applications</b>	<b>Suitable for:</b> WB, ICC/IF, IHC-P
<b>Species reactivity</b>	<b>Reacts with:</b> Human
<b>Immunogen</b>	Synthetic peptide, corresponding to a region within the internal sequence amino acids 259-351 of Human Chk1 (Uniprot ID O14757).
<b>Positive control</b>	293T nuclear extract, A431, H1299, Molt-4, Raji, HeLa cells, SCM-1 xenograft tissue
<b>General notes</b>	<p>The Life Science industry has been in the grips of a reproducibility crisis for a number of years. Abcam is leading the way in addressing this with our range of recombinant monoclonal antibodies and knockout edited cell lines for gold-standard validation. Please check that this product meets your needs before purchasing.</p> <p>If you have any questions, special requirements or concerns, please send us an inquiry and/or contact our Support team ahead of purchase. Recommended alternatives for this product can be found below, along with publications, customer reviews and Q&amp;As</p>

Properties

<b>Form</b>	Liquid
<b>Storage instructions</b>	Shipped at 4°C. Upon delivery aliquot. Store at -20°C or -80°C. Avoid freeze / thaw cycle.
<b>Storage buffer</b>	pH: 7.00 Preservative: 0.01% Thimerosal (merthiolate) Constituents: 79.99% PBS, 20% Glycerol (glycerin, glycerine)
<b>Purity</b>	Immunogen affinity purified
<b>Clonality</b>	Polyclonal
<b>Isotype</b>	IgG

Applications

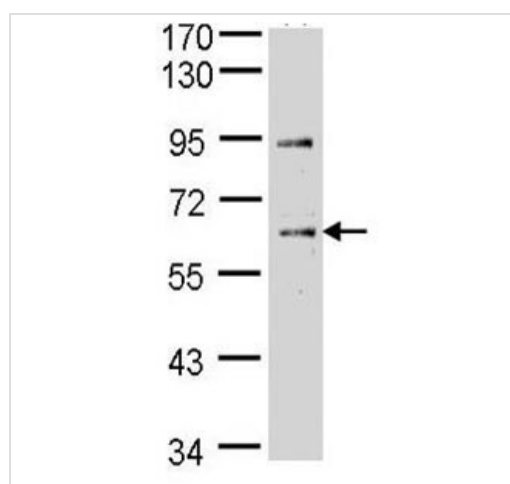
**The Abpromise guarantee** Our [Abpromise guarantee](#) covers the use of ab137400 in the following tested applications.

The application notes include recommended starting dilutions; optimal dilutions/concentrations should be determined by the end user.

Application	Abreviews	Notes
WB		1/500 - 1/3000. Predicted molecular weight: 54 kDa.
ICC/IF		1/100 - 1/1000.
IHC-P		1/100 - 1/1000. Perform heat mediated antigen retrieval with citrate buffer pH 6 before commencing with IHC staining protocol.

## Target

## Images



Western blot - Anti-Chk1 antibody (ab137400)

Anti-Chk1 antibody (ab137400) at 1/1000 dilution + 293T nuclear extract at 20 µg

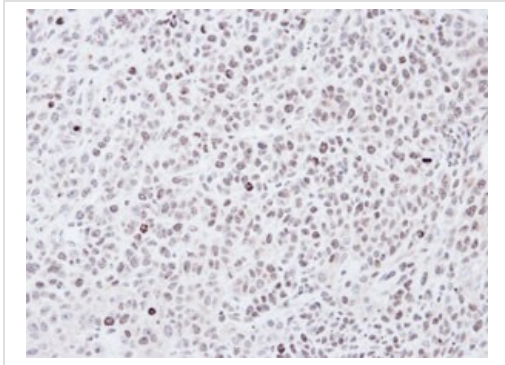
**Predicted band size:** 54 kDa

7.5% SDS PAGE



Immunocytochemistry/ Immunofluorescence - Anti-Chk1 antibody (ab137400)

Immunofluorescence analysis of paraformaldehyde-fixed HeLa cells labelled with ab137400 at 1/200 dilution. Costained with Hoechst 33342.



Immunohistochemical analysis of paraffin embedded SCM-1 xenograft tissue labelled with ab137400 at 1/100 dilution.

Immunohistochemistry (Formalin/PFA-fixed paraffin-embedded sections) - Anti-Chk1 antibody (ab137400)

**Please note:** All products are "FOR RESEARCH USE ONLY. NOT FOR USE IN DIAGNOSTIC PROCEDURES"

### Our Abpromise to you: Quality guaranteed and expert technical support

---

- Replacement or refund for products not performing as stated on the datasheet
- Valid for 12 months from date of delivery
- Response to your inquiry within 24 hours
- We provide support in Chinese, English, French, German, Japanese and Spanish
- Extensive multi-media technical resources to help you
- We investigate all quality concerns to ensure our products perform to the highest standards

If the product does not perform as described on this datasheet, we will offer a refund or replacement. For full details of the Abpromise, please visit <https://www.abcam.com/abpromise> or contact our technical team.

### Terms and conditions

---

- Guarantee only valid for products bought direct from Abcam or one of our authorized distributors