

## Product datasheet

# Anti-Chk1 antibody ab2845

★★★★★ 1 Abreviews 7 References 2 Images

### Overview

<b>Product name</b>	Anti-Chk1 antibody
<b>Description</b>	Goat polyclonal to Chk1
<b>Host species</b>	Goat
<b>Tested applications</b>	<b>Suitable for:</b> WB
<b>Species reactivity</b>	<b>Reacts with:</b> Rat, Human <b>Predicted to work with:</b> Dog, Pig, Chimpanzee, Rhesus monkey, Gorilla, Orangutan
<b>Immunogen</b>	Synthetic phospho peptide (Human), which represents a portion of human Chk 1 encoded within exon 8.
<b>Positive control</b>	HeLa whole cell lysate.

### Properties

<b>Form</b>	Liquid
<b>Storage instructions</b>	Shipped at 4°C. Upon delivery aliquot and store at -20°C. Avoid freeze / thaw cycles.
<b>Storage buffer</b>	Preservative: 0.1% Sodium azide Constituents: 0.021% PBS, 1.764% Sodium citrate, 1.815% Tris
<b>Purity</b>	Immunogen affinity purified
<b>Clonality</b>	Polyclonal
<b>Isotype</b>	IgG

### Applications

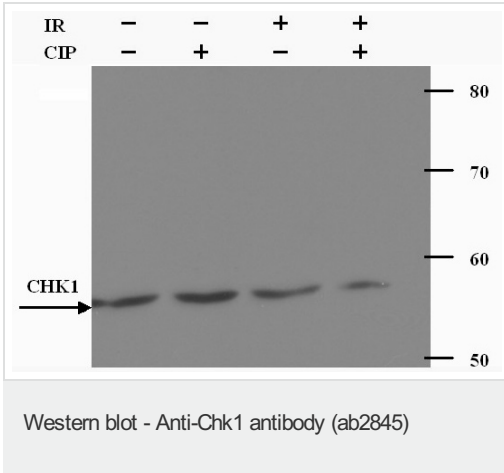
Our [Abpromise guarantee](#) covers the use of **ab2845** in the following tested applications.

The application notes include recommended starting dilutions; optimal dilutions/concentrations should be determined by the end user.

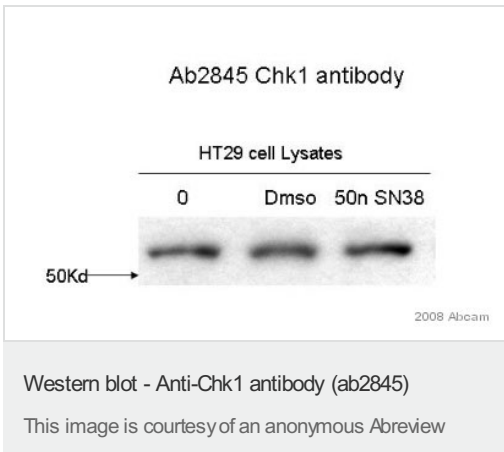
Application	Abreviews	Notes
WB	★★★★★	1/2500 - 1/15000. Detects a band of approximately 54 kDa (predicted molecular weight: 54 kDa).

### Target

Images



ab2845 at a 1:10000 dilution staining ~57 kDa Chk 1 in HeLa whole cell lysate (30µg / lane, +/- 10 Gy IR, +/- calf intestinal phosphatase treatment (CIP)) by Western blot (ECL, 30 seconds exposure). ab2845 at a 1:10000 dilution staining ~57 kDa Chk 1 in HeLa whole cell lysate (30µg / lane, +/- 10 Gy IR, +/- calf intestinal phosphatase treatment (CIP)) by Western blot (ECL, 30 seconds exposure).



**All lanes :** Anti-Chk1 antibody (ab2845) at 1/10000 dilution

**Lane 1 :** Whole cell lysate of HT29 tumour cell line, untreated

**Lane 2 :** Whole cell lysate of HT29 tumour cell line, treated with DMSO

**Lane 3 :** Whole cell lysate of HT29 tumour cell line, treated with 50nM SN38 for 6h

Lysates/proteins at 50 µg per lane.

**Secondary**

**All lanes :** HRP conjugated cow anti-goat antibody at 1/10000 dilution

Developed using the ECL technique.

Performed under reducing conditions.

**Predicted band size:** 54 kDa

**Observed band size:** 55 kDa

[why is the actual band size different from the predicted?](#)

**Exposure time:** 1 minute

**Please note:** All products are "FOR RESEARCH USE ONLY. NOT FOR USE IN DIAGNOSTIC PROCEDURES"

## **Our Abpromise to you: Quality guaranteed and expert technical support**

---

- Replacement or refund for products not performing as stated on the datasheet
- Valid for 12 months from date of delivery
- Response to your inquiry within 24 hours
  
- We provide support in Chinese, English, French, German, Japanese and Spanish
- Extensive multi-media technical resources to help you
- We investigate all quality concerns to ensure our products perform to the highest standards

If the product does not perform as described on this datasheet, we will offer a refund or replacement. For full details of the Abpromise, please visit <https://www.abcam.com/abpromise> or contact our technical team.

## **Terms and conditions**

---

- Guarantee only valid for products bought direct from Abcam or one of our authorized distributors