

Product datasheet

Anti-Chk1 (phospho S345) antibody ab47318

★★★★☆ 2 Abreviews 20 References 1 Image

Overview

Product name	Anti-Chk1 (phospho S345) antibody
Description	Rabbit polyclonal to Chk1 (phospho S345)
Host species	Rabbit
Tested applications	Suitable for: IHC-P
Species reactivity	Reacts with: Mouse, Rat, Human, Drosophila melanogaster
Immunogen	The antiserum was produced against synthesized phosphopeptide derived from human Chk1 around the phosphorylation site of serine 345 (S-F-S ^P -Q-P).
General notes	Chk1 (phospho-Ser345) antibody detects endogenous levels of Chk1 only when phosphorylated at serine 345.

Properties

Form	Liquid
Storage instructions	Shipped at 4°C. Store at -20°C. Stable for 12 months at -20°C.
Storage buffer	pH: 7.40 Preservative: 0.02% Sodium azide Constituents: PBS, 50% Glycerol (glycerin, glycerine), 0.87% Sodium chloride
Purity	Immunogen affinity purified
Purification notes	The antibody was purified using epitope-specific phosphopeptide. The antibody against non-phosphopeptide was removed by chromatography using non-phosphopeptide corresponding to the phosphorylation site.
Primary antibody notes	Chk1 (phospho-Ser345) antibody detects endogenous levels of Chk1 only when phosphorylated at serine 345.
Clonality	Polyclonal
Isotype	IgG

Applications

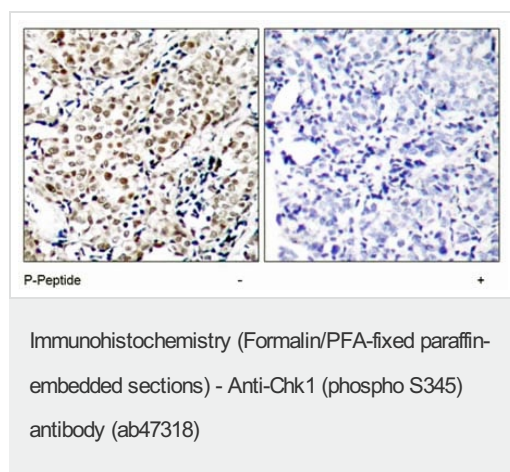
Our [Abpromise guarantee](#) covers the use of **ab47318** in the following tested applications.

The application notes include recommended starting dilutions; optimal dilutions/concentrations should be determined by the end user.

Application	Abreviews	Notes
IHC-P		1/50 - 1/100.

Target

Images



ab47318 staining human breast carcinoma tissue by IHC-P (left hand panel). The right hand panel shows staining in the presence of phospho-peptide.

Please note: All products are "FOR RESEARCH USE ONLY. NOT FOR USE IN DIAGNOSTIC PROCEDURES"

Our Abpromise to you: Quality guaranteed and expert technical support

- Replacement or refund for products not performing as stated on the datasheet
- Valid for 12 months from date of delivery
- Response to your inquiry within 24 hours
- We provide support in Chinese, English, French, German, Japanese and Spanish
- Extensive multi-media technical resources to help you
- We investigate all quality concerns to ensure our products perform to the highest standards

If the product does not perform as described on this datasheet, we will offer a refund or replacement. For full details of the Abpromise, please visit <https://www.abcam.com/abpromise> or contact our technical team.

Terms and conditions

- Guarantee only valid for products bought direct from Abcam or one of our authorized distributors