

Product datasheet

Anti-CHREBP antibody ab92809

[6 References](#) [4 Images](#)

Overview

Product name	Anti-CHREBP antibody
Description	Rabbit polyclonal to CHREBP
Host species	Rabbit
Tested applications	Suitable for: IHC-P, WB, ICC/IF
Species reactivity	Reacts with: Mouse, Rat, Human
Immunogen	Synthetic peptide, corresponding to C terminal amino acids 800-852 of Human CHREBP
General notes	<p>Reproducibility is key to advancing scientific discovery and accelerating scientists' next breakthrough.</p> <p>Abcam is leading the way with our range of recombinant antibodies, knockout-validated antibodies and knockout cell lines, all of which support improved reproducibility.</p> <p>We are also planning to innovate the way in which we present recommended applications and species on our product datasheets, so that only applications & species that have been tested in our own labs, our suppliers or by selected trusted collaborators are covered by our Abpromise™ guarantee.</p> <p>In preparation for this, we have started to update the applications & species that this product is Abpromise guaranteed for.</p> <p>We are also updating the applications & species that this product has been “predicted to work with,” however this information is not covered by our Abpromise guarantee.</p> <p>Applications & species from publications and Abreviews that have not been tested in our own labs or in those of our suppliers are not covered by the Abpromise guarantee.</p> <p>Please check that this product meets your needs before purchasing. If you have any questions, special requirements or concerns, please send us an inquiry and/or contact our Support team ahead of purchase. Recommended alternatives for this product can be found below, as well as customer reviews and Q&As.</p>

Properties

Form	Liquid
Storage instructions	Shipped at 4°C. Store at +4°C short term (1-2 weeks). Upon delivery aliquot. Store at -20°C or -80°C. Avoid freeze / thaw cycle.

Storage buffer	pH: 7.40 Preservative: 0.01% Sodium azide Constituent: Tris citrate/phosphate
Purity	Immunogen affinity purified
Clonality	Polyclonal
Isotype	IgG

Applications

Our [Abpromise guarantee](#) covers the use of **ab92809** in the following tested applications.

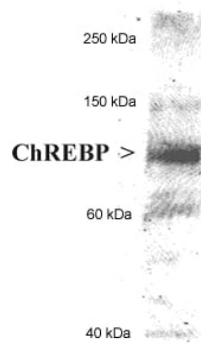
The application notes include recommended starting dilutions; optimal dilutions/concentrations should be determined by the end user.

Application	Abreviews	Notes
IHC-P		Use at an assay dependent concentration.
WB		Use at an assay dependent concentration. Predicted molecular weight: 95 kDa.
ICC/IF		1/100 - 1/500.

Target

Function	Transcriptional repressor. Binds to the canonical and non-canonical E box sequences 5'-CACGTG-3'.
Tissue specificity	Expressed in liver, heart, kidney, cerebellum and intestinal tissues.
Involvement in disease	Note=WBSR14 is located in the Williams-Beuren syndrome (WBS) critical region. WBS results from a hemizygous deletion of several genes on chromosome 7q11.23, thought to arise as a consequence of unequal crossing over between highly homologous low-copy repeat sequences flanking the deleted region. Haploinsufficiency of WBSR14 may be the cause of certain cardiovascular and musculo-skeletal abnormalities observed in the disease.
Sequence similarities	Contains 1 basic helix-loop-helix (bHLH) domain.
Cellular localization	Nucleus.

Images

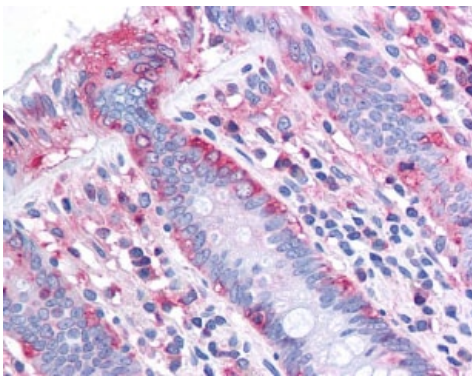


Western blot - Anti-CHREBP antibody (ab92809)

Anti-CHREBP antibody (ab92809) (anti CHREBP) + human hepatocyte lysate at 20 μ g

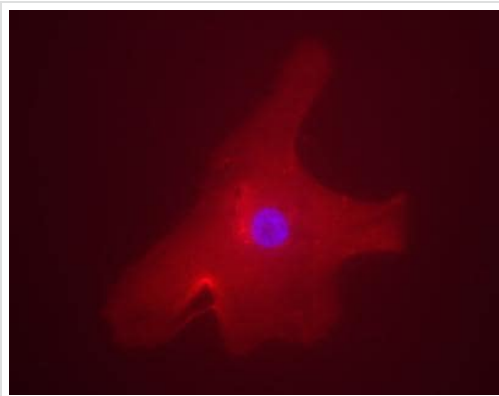
Predicted band size: 95 kDa

5-10 second film exposure



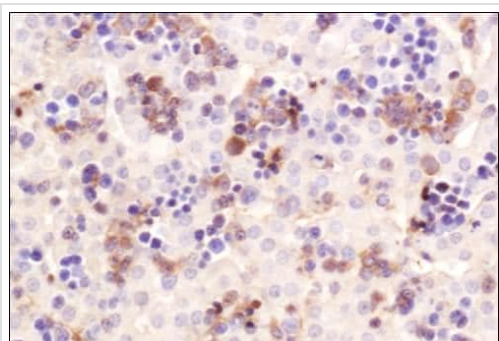
Immunohistochemistry (Formalin/PFA-fixed paraffin-embedded sections) - Anti-CHREBP antibody (ab92809)

anti CHREBP staining CHREBP in human colon epithelium (40X) by immunohistochemistry.



Immunocytochemistry/ Immunofluorescence - Anti-CHREBP antibody (ab92809)

anti CHREBP staining CHREBP in human hepatocyte by Immunofluorescence. Overlay staining of ChREBP (rhodamine red) and DAPI nuclear staining (blue).



Immunohistochemistry (Formalin/PFA-fixed paraffin-embedded sections) - Anti-CHREBP antibody (ab92809)

Immunohistochemistry analysis of mouse liver labeling CHREBP with ab92809. DAB with hematoxylin counterstain.

Please note: All products are "FOR RESEARCH USE ONLY. NOT FOR USE IN DIAGNOSTIC PROCEDURES"

Our Abpromise to you: Quality guaranteed and expert technical support

- Replacement or refund for products not performing as stated on the datasheet
- Valid for 12 months from date of delivery
- Response to your inquiry within 24 hours
- We provide support in Chinese, English, French, German, Japanese and Spanish
- Extensive multi-media technical resources to help you

- We investigate all quality concerns to ensure our products perform to the highest standards

If the product does not perform as described on this datasheet, we will offer a refund or replacement. For full details of the Abpromise, please visit <https://www.abcam.com/abpromise> or contact our technical team.

Terms and conditions

- Guarantee only valid for products bought direct from Abcam or one of our authorized distributors