

Product datasheet

Anti-Chromogranin C/SGII antibody ab12241

6 References 1 Image

Overview

<b>Product name</b>	Anti-Chromogranin C/SGII antibody
<b>Description</b>	Rabbit polyclonal to Chromogranin C/SGII
<b>Host species</b>	Rabbit
<b>Tested applications</b>	<b>Suitable for:</b> ICC/IF, WB, IP, IHC-FoFr, IHC-Fr, ICC
<b>Species reactivity</b>	<b>Reacts with:</b> Rat, Human
<b>Immunogen</b>	Synthetic peptide corresponding to Chromogranin C/SGII aa 1-19 (N terminal) conjugated to ovalbumin.
<b>General notes</b>	Dilute in PBS or medium which is identical to that used in the assay system. Previously labelled as Chromogranin C

Properties

<b>Form</b>	Liquid
<b>Storage instructions</b>	Shipped at 4°C. Store at +4°C short term (1-2 weeks). Upon delivery aliquot. Store at -20°C or -80°C. Avoid freeze / thaw cycle.
<b>Storage buffer</b>	Constituent: Whole serum
<b>Purity</b>	Whole antiserum
<b>Clonality</b>	Polyclonal
<b>Isotype</b>	IgG

Applications

Our [Abpromise guarantee](#) covers the use of **ab12241** in the following tested applications.

The application notes include recommended starting dilutions; optimal dilutions/concentrations should be determined by the end user.

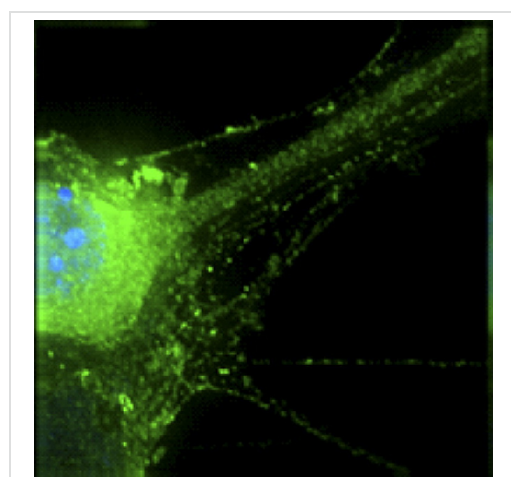
Application	Abreviews	Notes
ICC/IF		Use at an assay dependent concentration. PubMed: 17933551
WB		1/250 - 1/500. Predicted molecular weight: 74 kDa.

Application	Abreviews	Notes
IP		1/25 - 1/100.
IHC-FoFr		Use at an assay dependent concentration.
IHC-Fr		1/100.
ICC		Use at an assay dependent concentration.

## Target

<b>Function</b>	Secretogranin-2 is a neuroendocrine secretory granule protein, which is the precursor for biologically active peptides.
<b>Sequence similarities</b>	Belongs to the chromogranin/secretogranin protein family.
<b>Cellular localization</b>	Secreted. Neuroendocrine and endocrine secretory granules.

## Images



ab12241 staining Chromogranin C / SGII in Mouse primary cortical neuronal cells treated with IL-1 $\beta$  by ICC/IF (Immunocytochemistry/immunofluorescence). Cells were fixed with 4% paraformaldehyde, permeabilized with 0.2% Triton X-100 for 15 minutes and blocked with 10% serum for 1 hours at room temperature°C. Samples were incubated with primary antibody (1/1000 in 0.3% BSA) for 1 hour at room temperature. An Alexa Fluor®488-conjugated Goat anti-rabbit IgG polyclonal (1/2000) was used as the secondary antibody.

Immunocytochemistry/ Immunofluorescence - Anti-Chromogranin C/SGII antibody (ab12241)

Image from Tsakiri N et al., *Mol Cell Neurosci.*, 37(1), 110-8. Fig 6.; doi: 10.1016/j.mcn.2007.09.001. with permission from Elsevier.

**Please note:** All products are "FOR RESEARCH USE ONLY AND ARE NOT INTENDED FOR DIAGNOSTIC OR THERAPEUTIC USE"

## Our Abpromise to you: Quality guaranteed and expert technical support

- Replacement or refund for products not performing as stated on the datasheet
- Valid for 12 months from date of delivery
- Response to your inquiry within 24 hours

- We provide support in Chinese, English, French, German, Japanese and Spanish
- Extensive multi-media technical resources to help you
- We investigate all quality concerns to ensure our products perform to the highest standards

If the product does not perform as described on this datasheet, we will offer a refund or replacement. For full details of the Abpromise, please visit <https://www.abcam.com/abpromise> or contact our technical team.

### **Terms and conditions**

---

- Guarantee only valid for products bought direct from Abcam or one of our authorized distributors