




Product datasheet

Anti-CHSS2 antibody ab217021

2 Images

Overview

Product name	Anti-CHSS2 antibody
Description	Rabbit polyclonal to CHSS2
Host species	Rabbit
Tested applications	Suitable for: WB, IHC-P
Species reactivity	Reacts with: Human Predicted to work with: Mouse 
Immunogen	Synthetic peptide within Human CHSS2 aa 90-120 conjugated to keyhole limpet haemocyanin. The exact sequence is proprietary. Sequence: PYHPAQPQQAA KKA VRTRYIS TELGIRQRL Database link: Q8IZ52  Run BLAST with  Run BLAST with
Positive control	Human colon cancer tissue; MCF7 lysate.

Properties

Form	Liquid
Storage instructions	Shipped at 4°C. Store at +4°C short term (1-2 weeks). Upon delivery aliquot. Store at -20°C long term. Avoid freeze / thaw cycle.
Storage buffer	Preservative: 0.09% Sodium azide Constituents: 1% BSA, 50% Glycerol
Purity	Protein A purified
Clonality	Polyclonal
Isotype	IgG

Applications

Our [Abpromise guarantee](#) covers the use of **ab217021** in the following tested applications.

The application notes include recommended starting dilutions; optimal dilutions/concentrations should be determined by the end user.

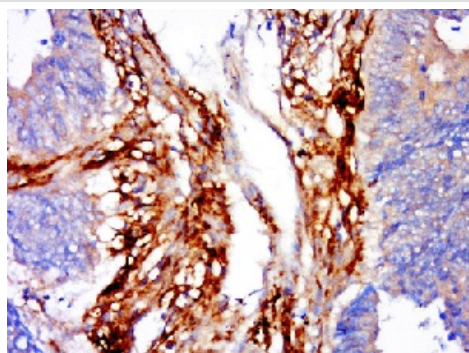
Application	Abreviews	Notes
WB		1/100 - 1/1000. Predicted molecular weight: 85 kDa.
IHC-P		1/100 - 1/500.

Target

Relevance CHSS2 belongs to the chondroitin N-acetylgalactosaminyltransferase family. It has both beta-1,3-glucuronic acid and beta-1,4-N-acetylgalactosamine transferase activity and transfers glucuronic acid (GlcUA) from UDP-GlcUA and N-acetylgalactosamine (GalNAc) from UDP-GalNAc to the non-reducing end of the elongating chondroitin polymer. CHSS2 is ubiquitous; highly expressed in pancreas, ovary, brain, heart, skeletal muscle, colon, kidney, liver, stomach, small intestine and placenta.

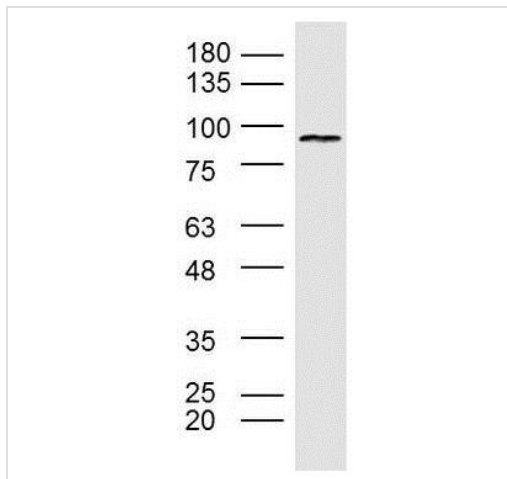
Cellular localization Golgi apparatus, golgi stack membrane; Single pass type II membrane protein.

Images



Immunohistochemical analysis of formalin-fixed, paraffin-embedded Human colon cancer tissue labeling CHSS2 with ab217021 at 1/200 dilution, followed by conjugation to the secondary antibody and DAB staining.

Immunohistochemistry (Formalin/PFA-fixed paraffin-embedded sections) - Anti-CHSS2 antibody (ab217021)



Western blot - Anti-CHSS2 antibody (ab217021)

Anti-CHSS2 antibody (ab217021) at 1/300 dilution + MCF7 cell lysate

Secondary

Goat Anti-Rabbit IgG Antibody (H+L), HRP at 1/5000 dilution

Predicted band size: 85 kDa

Please note: All products are "FOR RESEARCH USE ONLY. NOT FOR USE IN DIAGNOSTIC PROCEDURES"

Our Abpromise to you: Quality guaranteed and expert technical support

- Replacement or refund for products not performing as stated on the datasheet
- Valid for 12 months from date of delivery
- Response to your inquiry within 24 hours
- We provide support in Chinese, English, French, German, Japanese and Spanish
- Extensive multi-media technical resources to help you
- We investigate all quality concerns to ensure our products perform to the highest standards

If the product does not perform as described on this datasheet, we will offer a refund or replacement. For full details of the Abpromise, please visit <https://www.abcam.com/abpromise> or contact our technical team.

Terms and conditions

- Guarantee only valid for products bought direct from Abcam or one of our authorized distributors