


Product datasheet

Anti-CHST15 antibody ab229223

2 Images

Overview

Product name	Anti-CHST15 antibody
Description	Rabbit polyclonal to CHST15
Host species	Rabbit
Tested applications	Suitable for: WB, IHC-P
Species reactivity	Reacts with: Human Predicted to work with: Mouse, Rat 
Immunogen	Recombinant fragment within Human CHST15 (internal sequence). The exact sequence is proprietary. Database link: Q7LFX5
Positive control	WB: Raji whole cell lysate. IHC-P: Human gastric cancer tissue.

Properties

Form	Liquid
Storage instructions	Shipped at 4°C. Store at +4°C short term (1-2 weeks). Upon delivery aliquot. Store at -20°C long term. Avoid freeze / thaw cycle.
Storage buffer	pH: 7.00 Preservative: 0.01% Thimerosal (merthiolate) Constituents: 1.21% Tris, 0.75% Glycine, 20% Glycerol
Purity	Immunogen affinity purified
Clonality	Polyclonal
Isotype	IgG

Applications

Our [Abpromise guarantee](#) covers the use of **ab229223** in the following tested applications.

The application notes include recommended starting dilutions; optimal dilutions/concentrations should be determined by the end user.

Application	Abreviews	Notes
WB		1/500 - 1/3000.

Application	Abreviews	Notes
IHC-P		1/100 - 1/1000.

Target

Function

Sulfotransferase that transfers sulfate from 3'-phosphoadenosine 5'-phosphosulfate (PAPS) to the C-6 hydroxyl group of the GalNAc 4-sulfate residue of chondroitin sulfate A and forms chondroitin sulfate E containing GlcA-GalNAc(4,6-SO₄) repeating units. It also transfers sulfate to a unique non-reducing terminal sequence, GalNAc(4SO₄)-GlcA(2SO₄)-GalNAc(6SO₄), to yield a highly sulfated structure similar to the structure found in thrombomodulin chondroitin sulfate. May also act as a B-cell receptor involved in BCR ligation-mediated early activation that mediate regulatory signals key to B-cell development and/or regulation of B-cell-specific RAG expression; however such results are unclear in vivo.

Tissue specificity

Expressed in B-cell-enriched tissues but not in fetal or adult thymus. Expressed in fetal and adult spleen, lymph node, tonsil, bone marrow and peripheral leukocytes. Not expressed in T-cells. In pro-B, pre-B, and mature B-cell lines, it colocalizes with RAG1.

Sequence similarities

Belongs to the sulfotransferase 1 family.

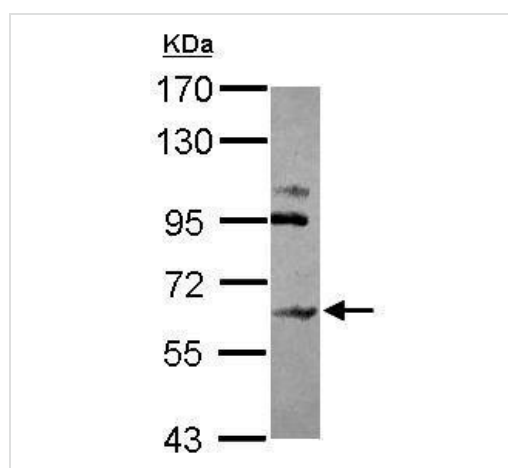
Post-translational modifications

Glycosylated.

Cellular localization

Golgi apparatus membrane. A small fraction may also be present at the cell surface, where it acts as a B-cell receptor.

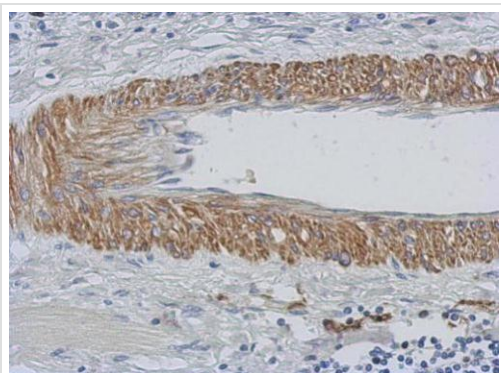
Images



Anti-CHST15 antibody (ab229223) at 1/500 dilution + Raji (human Burkitt's lymphoma cell line) whole cell lysate at 30 µg

7.5% SDS-PAGE gel.

Western blot - Anti-CHST15 antibody (ab229223)



Paraffin-embedded human gastric cancer tissue stained for CHST15 using ab229223 at 1/500 dilution in immunohistochemical analysis.

Immunohistochemistry (Formalin/PFA-fixed paraffin-embedded sections) - Anti-CHST15 antibody (ab229223)

Please note: All products are "FOR RESEARCH USE ONLY. NOT FOR USE IN DIAGNOSTIC PROCEDURES"

Our Abpromise to you: Quality guaranteed and expert technical support

- Replacement or refund for products not performing as stated on the datasheet
- Valid for 12 months from date of delivery
- Response to your inquiry within 24 hours
- We provide support in Chinese, English, French, German, Japanese and Spanish
- Extensive multi-media technical resources to help you
- We investigate all quality concerns to ensure our products perform to the highest standards

If the product does not perform as described on this datasheet, we will offer a refund or replacement. For full details of the Abpromise, please visit <https://www.abcam.com/abpromise> or contact our technical team.

Terms and conditions

- Guarantee only valid for products bought direct from Abcam or one of our authorized distributors