

## Product datasheet

# Anti-CID antibody ab10887

★★★★☆ 2 Abreviews 10 References 2 Images

### Overview

---

<b>Product name</b>	Anti-CID antibody
<b>Description</b>	Rabbit polyclonal to CID
<b>Host species</b>	Rabbit
<b>Tested applications</b>	<b>Suitable for:</b> WB, IHC-FoFr, ICC, ICC/IF
<b>Species reactivity</b>	<b>Reacts with:</b> Drosophila melanogaster
<b>Immunogen</b>	Synthetic peptide corresponding to Drosophila melanogaster CID aa 1-100 conjugated to keyhole limpet haemocyanin. (Peptide available as <a href="#">ab16766</a> )
<b>Positive control</b>	Drosophila Embryo Lysate;
<b>General notes</b>	<p>Reproducibility is key to advancing scientific discovery and accelerating scientists' next breakthrough.</p> <p>Abcam is leading the way with our range of recombinant antibodies, knockout-validated antibodies and knockout cell lines, all of which support improved reproducibility.</p> <p>We are also planning to innovate the way in which we present recommended applications and species on our product datasheets, so that only applications &amp; species that have been tested in our own labs, our suppliers or by selected trusted collaborators are covered by our Abpromise™ guarantee.</p> <p>In preparation for this, we have started to update the applications &amp; species that this product is Abpromise guaranteed for.</p> <p>We are also updating the applications &amp; species that this product has been “predicted to work with,” however this information is not covered by our Abpromise guarantee.</p> <p>Applications &amp; species from publications and Abreviews that have not been tested in our own labs or in those of our suppliers are not covered by the Abpromise guarantee.</p> <p>Please check that this product meets your needs before purchasing. If you have any questions, special requirements or concerns, please send us an inquiry and/or contact our Support team ahead of purchase. Recommended alternatives for this product can be found below, as well as customer reviews and Q&amp;As.</p>

### Properties


---

<b>Form</b>	Liquid
<b>Storage instructions</b>	Shipped at 4°C. Store at +4°C short term (1-2 weeks). Upon delivery aliquot. Store at -20°C or -80°C. Avoid freeze / thaw cycle.
<b>Storage buffer</b>	pH: 7.40 Preservative: 0.02% Sodium azide Constituent: PBS
	Batches of this product that have a concentration < 1mg/ml may have BSA added as a stabilising agent. If you would like information about the formulation of a specific lot, please contact our scientific support team who will be happy to help.
<b>Purity</b>	Immunogen affinity purified
<b>Clonality</b>	Polyclonal
<b>Isotype</b>	IgG

## Applications

Our [Abpromise guarantee](#) covers the use of **ab10887** in the following tested applications.

The application notes include recommended starting dilutions; optimal dilutions/concentrations should be determined by the end user.

Application	Abreviews	Notes
WB		
IHC-FoFr		
ICC		
ICC/IF		

**Application notes**

ICC/IF: Suggested working dilution is 1/100 (see PMID: 17077127).  
 IHC-FoFr: Use at an assay dependent dilution (PMID 19137063).  
 WB: 1/500 - 1/1000. Detects a band of approximately 32 kDa (predicted molecular weight: 26 kDa).

Not yet tested in other applications.  
 Optimal dilutions/concentrations should be determined by the end user.

## Target

**Function**

Histone H3-like variant which exclusively replaces conventional H3 in the nucleosome core of centromeric chromatin at the inner plate of the kinetochore. Required for recruitment and assembly of kinetochore proteins, mitotic progression and chromosome segregation. May serve as an epigenetic mark that propagates centromere identity through replication and cell division.

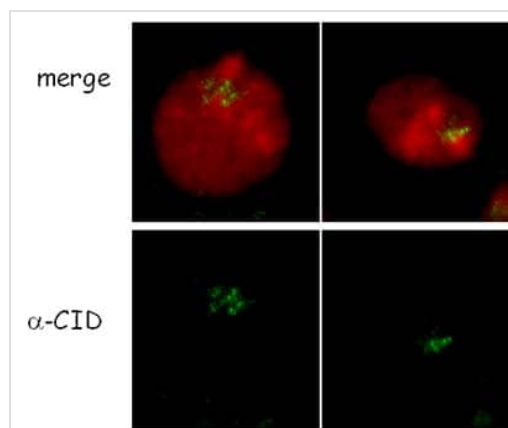
**Sequence similarities**

Belongs to the histone H3 family.

**Cellular localization**

Nucleus. Chromosome, centromere, kinetochore. Localizes exclusively in the kinetochore domain of centromeres. Co-expressed with yemalpha.

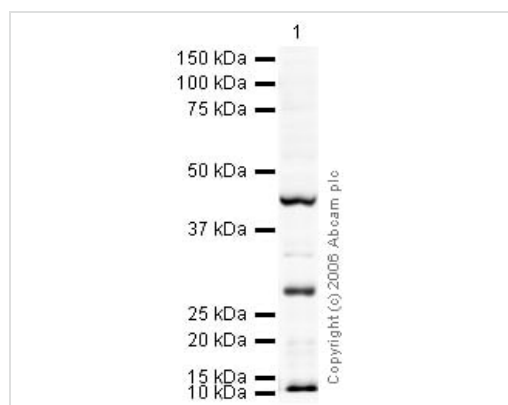
## Images



Immunocytochemistry/ Immunofluorescence - Anti-CID antibody (ab10887)

This image is courtesy of Elaine Dunleavy

Drosophila S2 cells treated with ab10887 at 1:100 dilution and fixed with 3% PFA for 3 mins. Red = DAPI Green = ab10887



Western blot - Anti-CID antibody (ab10887)

Anti-CID antibody (ab10887) at 1 µg/ml + Drosophila embryo nuclear extract (from melanogaster embryos 0-12Hr) ([ab27258](#)) at 20 µg

### Secondary

Goat polyclonal to Rabbit IgG H&L (HRP) Pre-Adsorbed at 1/10000 dilution

Performed under reducing conditions.

**Predicted band size:** 26 kDa

**Observed band size:** 26 kDa

**Additional bands at:** 12 kDa (possible non-specific binding), 42 kDa (possible non-specific binding)

**Please note:** All products are "FOR RESEARCH USE ONLY. NOT FOR USE IN DIAGNOSTIC PROCEDURES"

## Our Abpromise to you: Quality guaranteed and expert technical support

- Replacement or refund for products not performing as stated on the datasheet
- Valid for 12 months from date of delivery
- Response to your inquiry within 24 hours
- We provide support in Chinese, English, French, German, Japanese and Spanish
- Extensive multi-media technical resources to help you

- We investigate all quality concerns to ensure our products perform to the highest standards

If the product does not perform as described on this datasheet, we will offer a refund or replacement. For full details of the Abpromise, please visit <https://www.abcam.com/abpromise> or contact our technical team.

### **Terms and conditions**

---

- Guarantee only valid for products bought direct from Abcam or one of our authorized distributors