




Product datasheet

Anti-CISH/CIS antibody - C-terminal ab191447

3 Images

Overview

Product name	Anti-CISH/CIS antibody - C-terminal
Description	Rabbit polyclonal to CISH/CIS - C-terminal
Host species	Rabbit
Specificity	No cross reactivity with other proteins.
Tested applications	Suitable for: IHC-P, ICC, WB
Species reactivity	Reacts with: Rat, Human Predicted to work with: Mouse, Chicken, Cow 
Immunogen	Synthetic peptide corresponding to Human CISH/CIS aa 241-258 (C terminal). Sequence: LPLPRRMADYLRQYPFQL Database link: Q9NSE2  Run BLAST with  Run BLAST with
Positive control	Human lung cancer tissue; A431, SMMC, COLO320, HeLa and M231 cell lysates; Rat liver, Rat kidney and Human placenta tissue lysates.
General notes	This product was previously labelled as CISH

Properties

Form	Liquid
Storage instructions	Shipped at 4°C. Store at +4°C short term (1-2 weeks). Upon delivery aliquot. Store at -20°C long term. Avoid freeze / thaw cycle.
Storage buffer	Preservatives: 0.025% Sodium azide, 0.025% Thimerosal (merthiolate) Constituents: 0.45% Sodium chloride, 2.5% BSA, 0.1% Dibasic monohydrogen sodium phosphate
Purity	Immunogen affinity purified
Clonality	Polyclonal
Isotype	IgG

Applications

Our [Abpromise guarantee](#) covers the use of **ab191447** in the following tested applications.

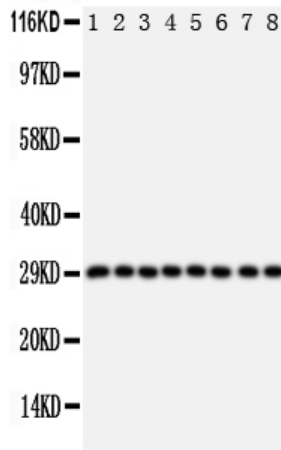
The application notes include recommended starting dilutions; optimal dilutions/concentrations should be determined by the end user.

Application	Abreviews	Notes
IHC-P		Use a concentration of 0.5 - 1 µg/ml. Perform heat mediated antigen retrieval with citrate buffer pH 6 before commencing with IHC staining protocol.
ICC		Use a concentration of 0.5 - 1 µg/ml.
WB		Use a concentration of 0.1 - 0.5 µg/ml. Predicted molecular weight: 29 kDa.

Target

Function	SOCS family proteins form part of a classical negative feedback system that regulates cytokine signal transduction. CIS is involved in the negative regulation of cytokines that signal through the JAK-STAT5 pathway such as erythropoietin, prolactin and interleukin 3 (IL3) receptor. Inhibits STAT5 trans-activation by suppressing its tyrosine phosphorylation. May be a substrate-recognition component of a SCF-like ECS (Elongin BC-CUL2/5-SOCS-box protein) E3 ubiquitin-protein ligase complex which mediates the ubiquitination and subsequent proteasomal degradation of target proteins.
Tissue specificity	Expressed in various epithelial tissues. Abundantly expressed in liver and kidney, and to a lesser extent in lung. The tissue distribution of isoforms 1 and 1B is distinct.
Pathway	Protein modification; protein ubiquitination.
Sequence similarities	Contains 1 SH2 domain. Contains 1 SOCS box domain.
Post-translational modifications	Association with EPOR may target the protein for proteolysis by the ubiquitin-dependent proteasome pathway. CIS is mainly monubiquitinated (37 kDa form) but may also exist in a polyubiquitinated form (45 kDa).

Images



Western blot - Anti-CISH/CIS antibody - C-terminal (ab191447)

All lanes : Anti-CISH/CIS antibody - C-terminal (ab191447) at 0.5 $\mu\text{g/ml}$

Lane 1 : Rat liver tissue lysate

Lane 2 : Rat kidney tissue lysate

Lane 3 : Human placenta tissue lysate

Lane 4 : A431 cell lysate

Lane 5 : SMMC cell lysate

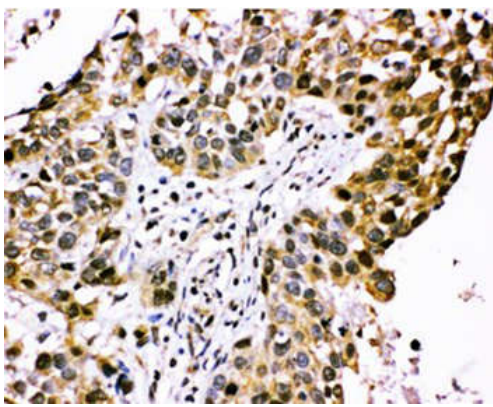
Lane 6 : HeLa cell lysate

Lane 7 : COLO320 cell lysate

Lane 8 : M231 cell lysate

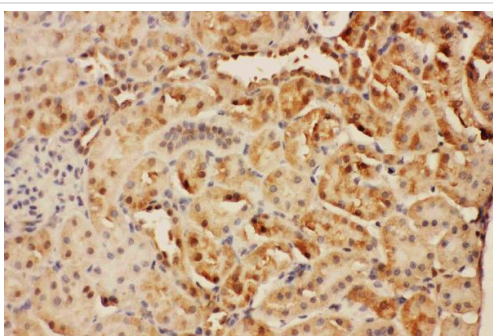
Predicted band size: 29 kDa

Observed band size: 29 kDa



Immunohistochemical analysis of paraffin-embedded Human lung cancer tissue labeling CISH/CIS with ab191447 at 1 $\mu\text{g/ml}$.

Immunohistochemistry (Formalin/PFA-fixed paraffin-embedded sections) - Anti-CISH/CIS antibody - C-terminal (ab191447)



Immunohistochemical analysis of paraffin-embedded rat kidney tissue labeling CISH/CIS with ab191447 at 1 $\mu\text{g/ml}$.

Immunohistochemistry (Formalin/PFA-fixed paraffin-embedded sections) - Anti-CISH/CIS antibody - C-terminal (ab191447)

Our Abpromise to you: Quality guaranteed and expert technical support

- Replacement or refund for products not performing as stated on the datasheet
- Valid for 12 months from date of delivery
- Response to your inquiry within 24 hours

- We provide support in Chinese, English, French, German, Japanese and Spanish
- Extensive multi-media technical resources to help you
- We investigate all quality concerns to ensure our products perform to the highest standards

If the product does not perform as described on this datasheet, we will offer a refund or replacement. For full details of the Abpromise, please visit <https://www.abcam.com/abpromise> or contact our technical team.

Terms and conditions

- Guarantee only valid for products bought direct from Abcam or one of our authorized distributors