

Product datasheet

Anti-CKAP2/LB1 antibody ab227214

2 Images

Overview

Product name	Anti-CKAP2/LB1 antibody
Description	Rabbit polyclonal to CKAP2/LB1
Host species	Rabbit
Tested applications	Suitable for: WB, ICC/IF
Species reactivity	Reacts with: Human
Immunogen	Recombinant fragment within Human CKAP2/LB1 (internal sequence). The exact sequence is proprietary. Database link: Q8WWK9
Positive control	WB: Raji and NCI-H929 whole cell extracts. ICC/IF: HeLa cells.
General notes	This product was previously labelled as CKAP2

Properties

Form	Liquid
Storage instructions	Shipped at 4°C. Store at +4°C short term (1-2 weeks). Upon delivery aliquot. Store at -20°C long term. Avoid freeze / thaw cycle.
Storage buffer	pH: 7.00 Preservative: 0.01% Thimerosal (merthiolate) Constituents: PBS, 20% Glycerol
Purity	Immunogen affinity purified
Clonality	Polyclonal
Isotype	IgG

Applications

Our [Abpromise guarantee](#) covers the use of **ab227214** in the following tested applications.

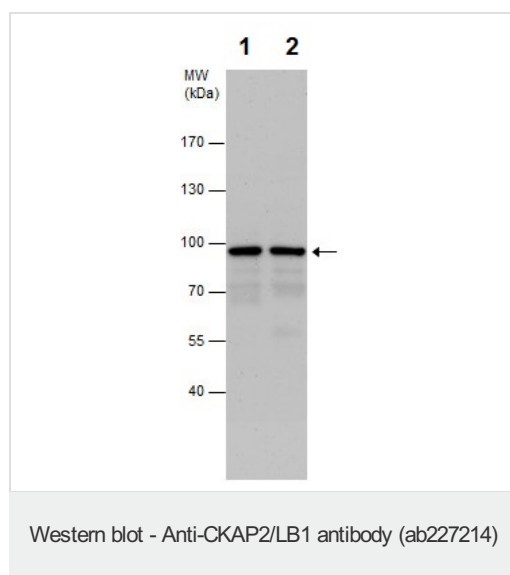
The application notes include recommended starting dilutions; optimal dilutions/concentrations should be determined by the end user.

Application	Abreviews	Notes
WB		1/500 - 1/3000. Predicted molecular weight: 77 kDa.
ICC/IF		1/100 - 1/1000.

Target

Function	Possesses microtubule stabilizing properties. Involved in regulating aneuploidy, cell cycling, and cell death in a p53/TP53-dependent manner.
Tissue specificity	Abundant in testis, thymus, and in tumor derived cell lines, while barely detectable in liver, prostate, and kidney.
Sequence similarities	Belongs to the CKAP2 family.
Developmental stage	Present at the G1/S boundary. Accumulates as cells progress from S to G2 into mitosis. Rapidly degraded during mitosis exit by CDH1-activated anaphase promoting complex/cyclosome (APC/C).
Cellular localization	Cytoplasm > cytoskeleton. Cytoplasm > cytoskeleton. Cytoplasm > cytoskeleton > spindle. Cytoplasm > cytoskeleton > spindle pole. Contrary to the ectopically expressed protein, endogenous CKAP2 does not colocalize with microtubules in G1, S and early G2. At late G2 and prophase after separation of duplicated centrosomes, colocalizes with gamma-tubulin and centrosome-proximal microtubules. From prometaphase through anaphase B, colocalizes with mitotic spindle poles and spindle microtubules. During cytokinesis, absent from midbody microtubules.

Images



All lanes : Anti-CKAP2/LB1 antibody (ab227214) at 1/1000 dilution

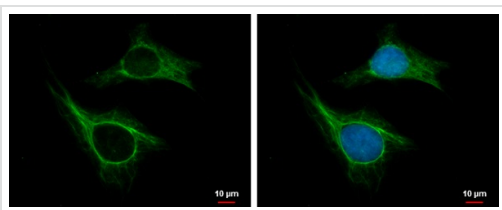
Lane 1 : Raji (human Burkitt's lymphoma cell line) whole cell extract

Lane 2 : NCI-H929 whole cell extract

Lysates/proteins at 30 µg per lane.

Predicted band size: 77 kDa

7.5% SDS-PAGE gel.



Immunocytochemistry/ Immunofluorescence - Anti-CKAP2/LB1 antibody (ab227214)

Ice-cold methanol-fixed HeLa (human epithelial cell line from cervix adenocarcinoma) cells stained for CKAP2/LB1 (green) using ab227214 at 1/500 dilution in ICC/IF.

Nuclear Counterstain: Hoechst 33342 (blue).

Please note: All products are "FOR RESEARCH USE ONLY. NOT FOR USE IN DIAGNOSTIC PROCEDURES"

Our Abpromise to you: Quality guaranteed and expert technical support

- Replacement or refund for products not performing as stated on the datasheet
- Valid for 12 months from date of delivery
- Response to your inquiry within 24 hours
- We provide support in Chinese, English, French, German, Japanese and Spanish
- Extensive multi-media technical resources to help you
- We investigate all quality concerns to ensure our products perform to the highest standards

If the product does not perform as described on this datasheet, we will offer a refund or replacement. For full details of the Abpromise, please visit <https://www.abcam.com/abpromise> or contact our technical team.

Terms and conditions

- Guarantee only valid for products bought direct from Abcam or one of our authorized distributors