


Product datasheet

Anti-Claudin 2 antibody ab53032

★★★★★ 1 Abreviews 15 References 3 Images

Overview

Product name	Anti-Claudin 2 antibody
Description	Rabbit polyclonal to Claudin 2
Host species	Rabbit
Specificity	ab53032 detects endogenous levels of total Claudin 2 protein.
Tested applications	Suitable for: ICC/IF, IHC-P, WB, ELISA
Species reactivity	Reacts with: Mouse, Human Predicted to work with: Rat 
Immunogen	A synthetic peptide derived from human Claudin 2.
Positive control	NIH 3T3 cell extracts.

Properties

Form	Liquid
Storage instructions	Shipped at 4°C. Store at -20°C. Stable for 12 months at -20°C.
Storage buffer	pH: 7.40 Preservative: 0.02% Sodium azide Constituents: 50% Glycerol, 0.87% Sodium chloride, PBS Without Mg ⁺² and Ca ⁺²
Purity	Immunogen affinity purified
Purification notes	ab53032 was affinity-purified from rabbit antiserum by affinity-chromatography using epitope-specific immunogen.
Clonality	Polyclonal
Isotype	IgG

Applications

Our [Abpromise guarantee](#) covers the use of **ab53032** in the following tested applications.

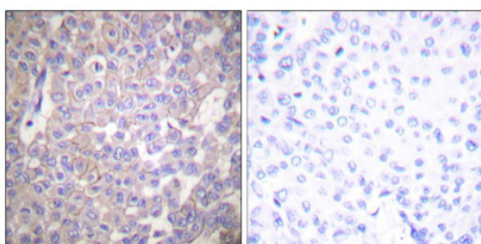
The application notes include recommended starting dilutions; optimal dilutions/concentrations should be determined by the end user.

Application	Abreviews	Notes
ICC/IF		Use a concentration of 5 µg/ml.
IHC-P	★★★★★	Use at an assay dependent concentration.
WB		1/500 - 1/1000. Detects a band of approximately 25 kDa (predicted molecular weight: 25 kDa).
ELISA		1/5000.

Target

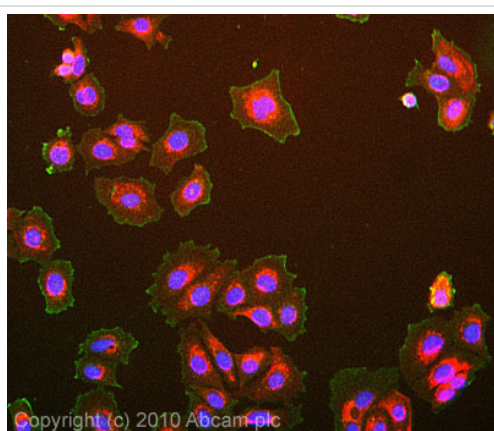
Function	Plays a major role in tight junction-specific obliteration of the intercellular space, through calcium-independent cell-adhesion activity.
Sequence similarities	Belongs to the claudin family.
Cellular localization	Cell junction > tight junction. Cell membrane.

Images



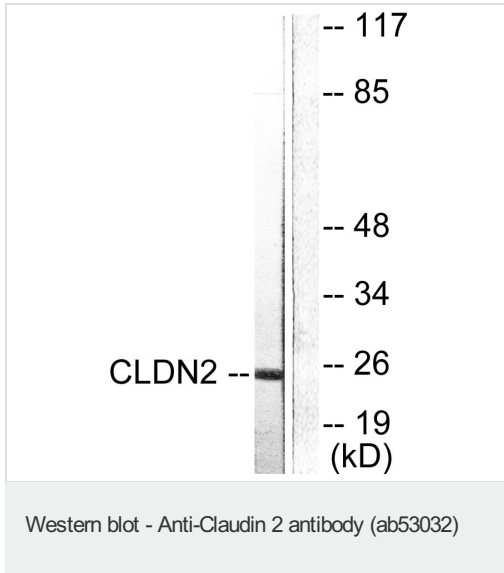
Immunohistochemistry (Formalin/PFA-fixed paraffin-embedded sections) - Anti-Claudin 2 antibody (ab53032)

Immunohistochemistry analysis of paraffin-embedded human breast carcinoma tissue, using ab53032. The picture on the right is blocked with the synthesized peptide.



Immunocytochemistry/ Immunofluorescence - Anti-Claudin 2 antibody (ab53032)

ICC/IF image of ab53032 stained MCF7 cells. The cells were 100% methanol fixed (5 min) and then incubated in 1%BSA / 10% normal goat serum / 0.3M glycine in 0.1% PBS-Tween for 1h to permeabilise the cells and block non-specific protein-protein interactions. The cells were then incubated with the antibody (ab53032, 5µg/ml) overnight at +4°C. The secondary antibody (green) was Alexa Fluor® 488 goat anti-rabbit IgG (H+L) used at a 1/1000 dilution for 1h. Alexa Fluor® 594 WGA was used to label plasma membranes (red) at a 1/200 dilution for 1h. DAPI was used to stain the cell nuclei (blue) at a concentration of 1.43µM.



All lanes : Anti-Claudin 2 antibody (ab53032)

Lane 1 : NIH/3T3 cells

Lane 2 : NIH/3T3 cells with blocking peptide

Predicted band size: 25 kDa

Please note: All products are "FOR RESEARCH USE ONLY AND ARE NOT INTENDED FOR DIAGNOSTIC OR THERAPEUTIC USE"

Our Abpromise to you: Quality guaranteed and expert technical support

- Replacement or refund for products not performing as stated on the datasheet
- Valid for 12 months from date of delivery
- Response to your inquiry within 24 hours

- We provide support in Chinese, English, French, German, Japanese and Spanish
- Extensive multi-media technical resources to help you
- We investigate all quality concerns to ensure our products perform to the highest standards

If the product does not perform as described on this datasheet, we will offer a refund or replacement. For full details of the Abpromise, please visit <https://www.abcam.com/abpromise> or contact our technical team.

Terms and conditions

- Guarantee only valid for products bought direct from Abcam or one of our authorized distributors