

Product datasheet

Anti-CLCA1 antibody [EPR12254-88] - BSA and Azide free ab197059

Recombinant RabMAb

6 Images

Overview

Product name	Anti-CLCA1 antibody [EPR12254-88] - BSA and Azide free
Description	Rabbit monoclonal [EPR12254-88] to CLCA1 - BSA and Azide free
Host species	Rabbit
Specificity	The mouse and rat recommendation is based on the WB results. We do not guarantee IHC-P for mouse and rat.
Tested applications	Suitable for: WB, IHC-P, ICC/IF, Flow Cyt
Species reactivity	Reacts with: Mouse, Rat, Human
Immunogen	Recombinant fragment within Human CLCA1. The exact sequence is proprietary. Database link: A8K7I4
Positive control	IHC-P: Human small intestine tissue.
General notes	Ab197059 is the carrier-free version of ab180851 . This format is designed for use in antibody labeling, including fluorochromes, metal isotopes, oligonucleotides, enzymes.

Our [carrier-free formats](#) are supplied in a buffer free of BSA, sodium azide and glycerol for higher conjugation efficiency.

Use our [conjugation kits](#) for antibody conjugates that are ready-to-use in as little as 20 minutes with <1 minute hands-on-time and 100% antibody recovery: available for fluorescent dyes, HRP, biotin and gold.

ab197059 is compatible with the Maxpar® Antibody Labeling Kit from Fluidigm.

Maxpar® is a trademark of Fluidigm Canada Inc.

This product is a recombinant monoclonal antibody, which offers several advantages including:

- High batch-to-batch consistency and reproducibility
- Improved sensitivity and specificity
- Long-term security of supply
- Animal-free production

For more information [see here](#).

Our RabMAb® technology is a patented hybridoma-based technology for making rabbit monoclonal antibodies. For details on our patents, please refer to [RabMAb® patents](#).

Reproducibility is key to advancing scientific discovery and accelerating scientists' next breakthrough.

Abcam is leading the way with our range of recombinant antibodies, knockout-validated antibodies and knockout cell lines, all of which support improved reproducibility.

We are also planning to innovate the way in which we present recommended applications and species on our product datasheets, so that only applications & species that have been tested in our own labs, our suppliers or by selected trusted collaborators are covered by our Abpromise™ guarantee.

In preparation for this, we have started to update the applications & species that this product is Abpromise guaranteed for.

We are also updating the applications & species that this product has been “predicted to work with,” however this information is not covered by our Abpromise guarantee.

Applications & species from publications and Abreviews that have not been tested in our own labs or in those of our suppliers are not covered by the Abpromise guarantee.

Please check that this product meets your needs before purchasing. If you have any questions, special requirements or concerns, please send us an inquiry and/or contact our Support team ahead of purchase. Recommended alternatives for this product can be found below, as well as customer reviews and Q&As.

Properties

Form	Liquid
Storage instructions	Shipped at 4°C. Store at +4°C. Do Not Freeze.
Storage buffer	pH: 7.2 Constituent: PBS
Carrier free	Yes
Purity	Protein A purified
Clonality	Monoclonal
Clone number	EPR12254-88
Isotype	IgG

Applications

Our [Abpromise guarantee](#) covers the use of **ab197059** in the following tested applications.

The application notes include recommended starting dilutions; optimal dilutions/concentrations should be determined by the end user.

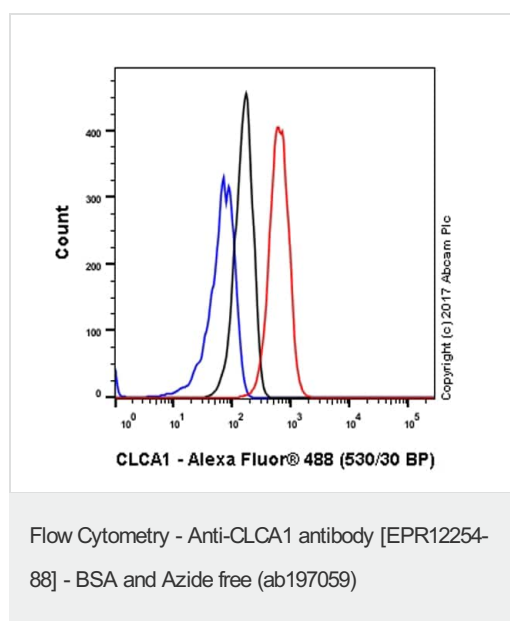
Application	Abreviews	Notes
WB		Use at an assay dependent concentration. Predicted molecular weight: 100 kDa.
IHC-P		Use at an assay dependent concentration. Perform heat mediated antigen retrieval with Tris/EDTA buffer pH 9.0 before commencing with IHC staining protocol. The mouse and rat recommendation is based on the WB results. We do not guarantee IHC-P for mouse and rat.

Application	Abreviews	Notes
ICC/IF		Use at an assay dependent concentration.
Flow Cyt		Use at an assay dependent concentration.

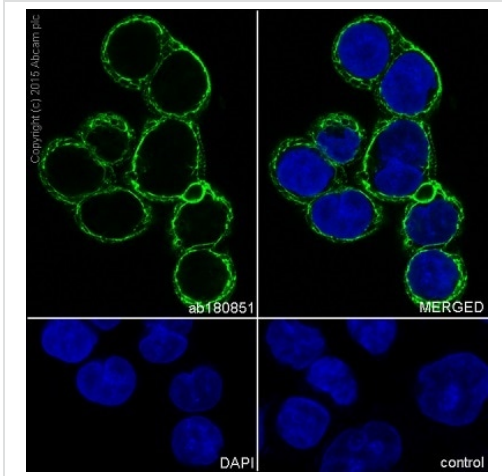
Target

Function	May be involved in mediating calcium-activated chloride conductance. May play critical roles in goblet cell metaplasia, mucus hypersecretion, cystic fibrosis and AHR. May be involved in the regulation of mucus production and/or secretion by goblet cells. Involved in the regulation of tissue inflammation in the innate immune response. May play a role as a tumor suppressor. Induces MUC5AC.
Tissue specificity	Highly expressed in small intestine and colon namely in intestinal basal crypt epithelia and goblet cells, and appendix. Weakly expressed in uterus, testis and kidney. Expressed in the airways epithelium of both asthmatic and healthy patients. Expressed in the bronchial epithelium, especially in mucus-producing goblet cells. Expressed in normal turbinate mucosa and nasal polyp. Expressed in.
Sequence similarities	Belongs to the CLCR family. Contains 1 VWFA domain.
Post-translational modifications	Glycosylated. The 125-kDa product is processed and yields to two cell-surface-associated subunits, a 90-kDa protein and a group of 37-to 41-kDa proteins.
Cellular localization	Secreted > extracellular space. Cell membrane. Protein that remains attached to the plasma membrane appeared to be predominantly localized to microvilli.

Images



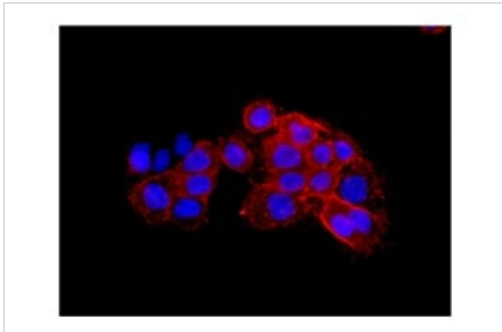
Flow Cytometry analysis of A431 (Human epidermoid carcinoma epithelial cell) cells labeling CLCA1 with purified [ab180851](#) at 1:20 dilution (10 µg/ml) (red). Cells were fixed with 4% Paraformaldehyde and permeabilised with 90% methanol. A Goat anti rabbit IgG (Alexa Fluor® 488) secondary antibody was used at 1:2000 dilution. Isotype control - Rabbit monoclonal IgG (Black). Unlabeled control - Cell without incubation with primary antibody and secondary antibody (Blue). This data was developed using the same antibody clone in a different buffer formulation containing PBS, BSA, glycerol, and sodium azide ([ab180851](#)).



Immunocytochemistry/ Immunofluorescence - Anti-CLCA1 antibody [EPR12254-88] - BSA and Azide free (ab197059)

Immunocytochemistry/ Immunofluorescence analysis of SW480 (Human colorectal adenocarcinoma epithelial cell) cells labeling CLCA1 with Purified [ab180851](#) at 1:100 dilution. Cells were fixed in 100% Methanol. [ab150077](#) Goat anti rabbit IgG(Alexa Fluor® 488) was used as the secondary antibody at 1:1000 dilution. DAPI nuclear counterstain. PBS instead of the primary antibody was used as the secondary antibody only control.

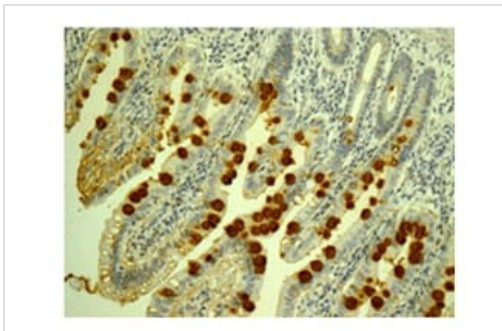
This data was developed using the same antibody clone in a different buffer formulation containing PBS, BSA, glycerol, and sodium azide ([ab180851](#)).



Immunocytochemistry/ Immunofluorescence - Anti-CLCA1 antibody [EPR12254-88] - BSA and Azide free (ab197059)

Immunofluorescence analysis of A431 cells labeling CLCA1 using unpurified [ab180851](#) at 1/50 dilution.

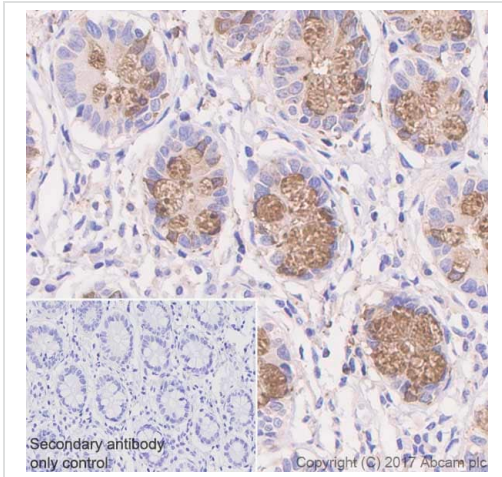
This data was developed using the same antibody clone in a different buffer formulation containing PBS, BSA, glycerol, and sodium azide ([ab180851](#)).



Immunohistochemistry (Formalin/PFA-fixed paraffin-embedded sections) - Anti-CLCA1 antibody [EPR12254-88] - BSA and Azide free (ab197059)

Immunohistochemical analysis of paraffin-embedded human colon tissue labeling CLCA1 using unpurified [ab180851](#) at 1/100 dilution.

This data was developed using the same antibody clone in a different buffer formulation containing PBS, BSA, glycerol, and sodium azide ([ab180851](#)).







Immunohistochemistry (Formalin/PFA-fixed paraffin-embedded sections) analysis of human small intestine tissue sections labeling CLCA1 with purified [ab180851](#) at 1:4000 dilution (0.07 µg/ml). Heat mediated antigen retrieval was performed using [ab93684](#) (Tris/EDTA buffer, pH 9.0). Tissue was counterstained with hematoxylin. ImmunoHistoProbe one step HRP Polymer (ready to use) secondary antibody was used. PBS instead of the primary antibody was used as the negative control.

This data was developed using the same antibody clone in a different buffer formulation containing PBS, BSA, glycerol and sodium azide ([ab180851](#)).

Immunohistochemistry (Formalin/PFA-fixed paraffin-embedded sections) - Anti-CLCA1 antibody [EPR12254-88] - BSA and Azide free (ab197059)

Why choose a recombinant antibody?

 Research with confidence Consistent and reproducible results	 Long-term and scalable supply Recombinant technology
 Success from the first experiment Confirmed specificity	 Ethical standards compliant Animal-free production

Anti-CLCA1 antibody [EPR12254-88] - BSA and Azide free (ab197059)

Please note: All products are "FOR RESEARCH USE ONLY. NOT FOR USE IN DIAGNOSTIC PROCEDURES"

Our Abpromise to you: Quality guaranteed and expert technical support

- Replacement or refund for products not performing as stated on the datasheet
- Valid for 12 months from date of delivery
- Response to your inquiry within 24 hours
- We provide support in Chinese, English, French, German, Japanese and Spanish
- Extensive multi-media technical resources to help you
- We investigate all quality concerns to ensure our products perform to the highest standards

If the product does not perform as described on this datasheet, we will offer a refund or replacement. For full details of the Abpromise, please visit <https://www.abcam.com/abpromise> or contact our technical team.

Terms and conditions

- Guarantee only valid for products bought direct from Abcam or one of our authorized distributors