

Product datasheet

Anti-CLEC12A antibody ab238687

2 Images

Overview

Product name	Anti-CLEC12A antibody
Description	Rabbit polyclonal to CLEC12A
Host species	Rabbit
Tested applications	Suitable for: IHC-P
Species reactivity	Reacts with: Human
Immunogen	Recombinant fragment corresponding to Human CLEC12A aa 66-265. Database link: Q5QGZ9
Positive control	IHC-P: Human tonsil and spleen tissues.
General notes	<p>Reproducibility is key to advancing scientific discovery and accelerating scientists' next breakthrough.</p> <p>Abcam is leading the way with our range of recombinant antibodies, knockout-validated antibodies and knockout cell lines, all of which support improved reproducibility.</p> <p>We are also planning to innovate the way in which we present recommended applications and species on our product datasheets, so that only applications & species that have been tested in our own labs, our suppliers or by selected trusted collaborators are covered by our Abpromise™ guarantee.</p> <p>In preparation for this, we have started to update the applications & species that this product is Abpromise guaranteed for.</p> <p>We are also updating the applications & species that this product has been “predicted to work with,” however this information is not covered by our Abpromise guarantee.</p> <p>Applications & species from publications and Abreviews that have not been tested in our own labs or in those of our suppliers are not covered by the Abpromise guarantee.</p> <p>Please check that this product meets your needs before purchasing. If you have any questions, special requirements or concerns, please send us an inquiry and/or contact our Support team ahead of purchase. Recommended alternatives for this product can be found below, as well as customer reviews and Q&As.</p>

Properties

Form	Liquid
-------------	--------

Storage instructions	Shipped at 4°C. Store at +4°C short term (1-2 weeks). Upon delivery aliquot. Store at -20°C long term. Avoid freeze / thaw cycle.
Storage buffer	pH: 7.30 Preservative: 0.02% Sodium azide Constituents: 50% Glycerol (glycerin, glycerine), PBS
Purity	Immunogen affinity purified
Clonality	Polyclonal
Isotype	IgG

Applications

Our [Abpromise guarantee](#) covers the use of **ab238687** in the following tested applications.

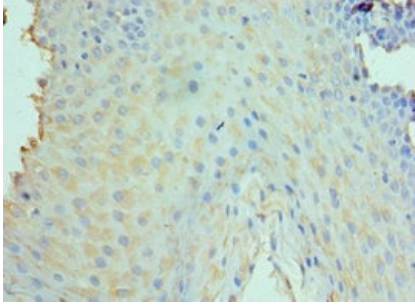
The application notes include recommended starting dilutions; optimal dilutions/concentrations should be determined by the end user.

Application	Abreviews	Notes
IHC-P		1/20 - 1/200.

Target

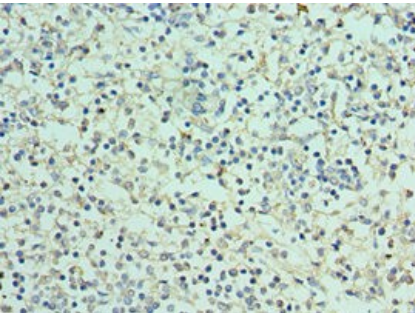
Function	Cell surface receptor that modulates signaling cascades and mediates tyrosine phosphorylation of target MAP kinases.
Tissue specificity	Detected in normal myeloid cells and in acute myeloid leukemia cells. Detected in neutrophils, eosinophils, monocytes and dendritic cells. Detected in spleen macrophage-rich red pulp and in lymph node (at protein level). Detected in peripheral blood leukocytes, dendritic cells, bone marrow, monocytes, mononuclear leukocytes and macrophages.
Sequence similarities	Contains 1 C-type lectin domain.
Domain	Contains 1 copy of a cytoplasmic motif that is referred to as the immunoreceptor tyrosine-based inhibitor motif (ITIM). This motif is involved in modulation of cellular responses. The phosphorylated ITIM motif can bind the SH2 domain of several SH2-containing phosphatases.
Post-translational modifications	Highly N-glycosylated. Glycosylation varies between cell types.
Cellular localization	Cell membrane. Ligand binding leads to internalization.

Images



Immunohistochemistry (Formalin/PFA-fixed paraffin-embedded sections) - Anti-CLEC12A antibody (ab238687)

Paraffin-embedded human tonsil tissue stained for CLEC12A using ab238687 at 1/100 dilution in immunohistochemical analysis. Heat-mediated antigen retrieval was performed with sodium citrate buffer.



Immunohistochemistry (Formalin/PFA-fixed paraffin-embedded sections) - Anti-CLEC12A antibody (ab238687)

Paraffin-embedded human spleen tissue stained for CLEC12A using ab238687 at 1/100 dilution in immunohistochemical analysis. Heat-mediated antigen retrieval was performed with sodium citrate buffer.

Please note: All products are "FOR RESEARCH USE ONLY. NOT FOR USE IN DIAGNOSTIC PROCEDURES"

Our Abpromise to you: Quality guaranteed and expert technical support

- Replacement or refund for products not performing as stated on the datasheet
- Valid for 12 months from date of delivery
- Response to your inquiry within 24 hours
- We provide support in Chinese, English, French, German, Japanese and Spanish
- Extensive multi-media technical resources to help you
- We investigate all quality concerns to ensure our products perform to the highest standards

If the product does not perform as described on this datasheet, we will offer a refund or replacement. For full details of the Abpromise, please visit <https://www.abcam.com/abpromise> or contact our technical team.

Terms and conditions

- Guarantee only valid for products bought direct from Abcam or one of our authorized distributors