

Product datasheet

Anti-CLEC4D antibody ab175021

[1 References](#) [2 Images](#)

Overview

Product name	Anti-CLEC4D antibody
Description	Rabbit polyclonal to CLEC4D
Host species	Rabbit
Tested applications	Suitable for: IHC-P, WB
Species reactivity	Reacts with: Human
Immunogen	Recombinant full length protein corresponding to Human CLEC4D. Database link: Q8WXI8
Positive control	293T cell extract; Human liver cancer tissue.
General notes	<p>The Life Science industry has been in the grips of a reproducibility crisis for a number of years. Abcam is leading the way in addressing this with our range of recombinant monoclonal antibodies and knockout edited cell lines for gold-standard validation. Please check that this product meets your needs before purchasing.</p> <p>If you have any questions, special requirements or concerns, please send us an inquiry and/or contact our Support team ahead of purchase. Recommended alternatives for this product can be found below, along with publications, customer reviews and Q&As</p>

Properties

Form	Liquid
Storage instructions	Shipped at 4°C. Store at +4°C short term (1-2 weeks). Upon delivery aliquot. Store at -20°C long term. Avoid freeze / thaw cycle.
Storage buffer	pH: 7.30 Preservative: 0.02% Sodium azide Constituents: 50% Glycerol, 49% PBS
Purity	Immunogen affinity purified
Clonality	Polyclonal
Isotype	IgG

Applications

The Abpromise guarantee

Our **Abpromise guarantee** covers the use of ab175021 in the following tested applications.

The application notes include recommended starting dilutions; optimal dilutions/concentrations should be determined by the end user.

Application	Abreviews	Notes
IHC-P		1/50 - 1/200.
WB		1/500 - 1/2000. Predicted molecular weight: 25 kDa.

Target

Function

Functions as an endocytic receptor. May be involved in antigen uptake at the site of infection, either for clearance of the antigen, or for processing and further presentation to T cells.

Tissue specificity

Expressed weakly in peripheral blood leukocytes, bone marrow and spleen. Expression is confined mostly in monocytes and macrophage and seems to be up-regulated by IL-6, IL-10, TNF-alpha and IFN-gamma.

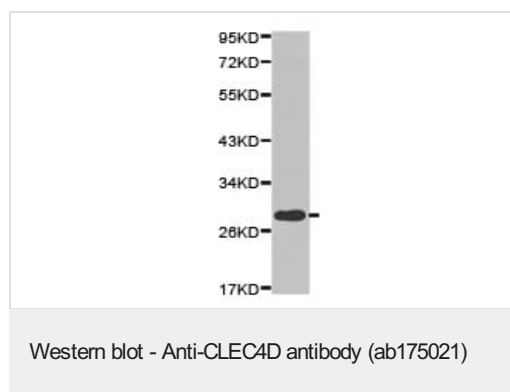
Sequence similarities

Contains 1 C-type lectin domain.

Cellular localization

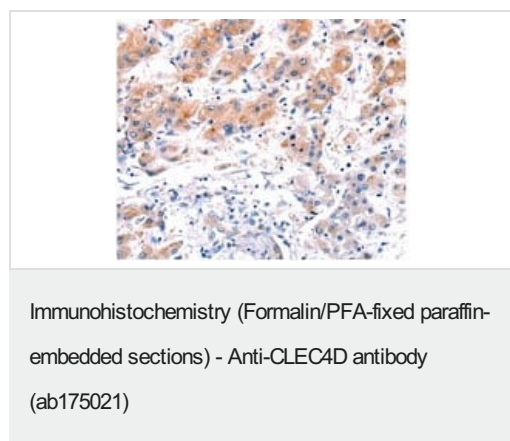
Membrane.

Images



Anti-CLEC4D antibody (ab175021) at 1/500 dilution + 293T cell extract

Predicted band size: 25 kDa



Immunohistochemical analysis of paraffin-embedded Human liver cancer tissue labeling CLEC4D with ab175021 at 1/50 dilution.

Please note: All products are "FOR RESEARCH USE ONLY. NOT FOR USE IN DIAGNOSTIC PROCEDURES"

Our Abpromise to you: Quality guaranteed and expert technical support

- Replacement or refund for products not performing as stated on the datasheet
- Valid for 12 months from date of delivery
- Response to your inquiry within 24 hours

- We provide support in Chinese, English, French, German, Japanese and Spanish
- Extensive multi-media technical resources to help you
- We investigate all quality concerns to ensure our products perform to the highest standards

If the product does not perform as described on this datasheet, we will offer a refund or replacement. For full details of the Abpromise, please visit <https://www.abcam.com/abpromise> or contact our technical team.

Terms and conditions

- Guarantee only valid for products bought direct from Abcam or one of our authorized distributors