

## Product datasheet

# Anti-CLEC9A antibody [EPR22324] ab223188

Recombinant **RabMAb**

[2 References](#) [6 Images](#)

### Overview

<b>Product name</b>	Anti-CLEC9A antibody [EPR22324]
<b>Description</b>	Rabbit monoclonal [EPR22324] to CLEC9A
<b>Host species</b>	Rabbit
<b>Tested applications</b>	<b>Suitable for:</b> IHC-P, Flow Cyt <b>Unsuitable for:</b> ICC/IF, IP or WB
<b>Species reactivity</b>	<b>Reacts with:</b> Human
<b>Immunogen</b>	Synthetic peptide. This information is proprietary to Abcam and/or its suppliers.
<b>Positive control</b>	IHC-P: Human tonsil, thymoma and gastric cancer tissues. Flow Cyt: Human peripheral blood mononuclear cell (PBMC) and HEK-293T transfected with GFP-tagged CLEC9A overexpression construct cells.

### Properties

<b>Form</b>	Liquid
<b>Storage instructions</b>	Shipped at 4°C. Store at +4°C short term (1-2 weeks). Upon delivery aliquot. Store at -20°C long term. Avoid freeze / thaw cycle.
<b>Storage buffer</b>	pH: 7.2 Preservative: 0.01% Sodium azide Constituents: PBS, 40% Glycerol (glycerin, glycerine), 0.05% BSA
<b>Purity</b>	Protein A purified
<b>Clonality</b>	Monoclonal
<b>Clone number</b>	EPR22324
<b>Isotype</b>	IgG

### Applications

**The Abpromise guarantee** Our [Abpromise guarantee](#) covers the use of ab223188 in the following tested applications. The application notes include recommended starting dilutions; optimal dilutions/concentrations should be determined by the end user.

Application	Abreviews	Notes
IHC-P		1/1000. Perform heat mediated antigen retrieval with Tris/EDTA buffer pH 9.0 before commencing with IHC staining protocol.
Flow Cyt		1/50.

**Application notes** Is unsuitable for ICC/IF,IP or WB.

## Target

### Function

Functions as an endocytic receptor on a small subset of myeloid cells specialized for the uptake and processing of material from dead cells. Recognizes filamentous form of actin in association with particular actin-binding domains of cytoskeletal proteins, including spectrin, exposed when cell membranes are damaged, and mediate the cross-presentation of dead-cell associated antigens in a Syk-dependent manner.

### Tissue specificity

In peripheral blood highly restricted on the surface of BDCA31(+) dendritic cells and on a small subset of CD14(+) and CD16(-) monocytes.

### Sequence similarities

Contains 1 C-type lectin domain.

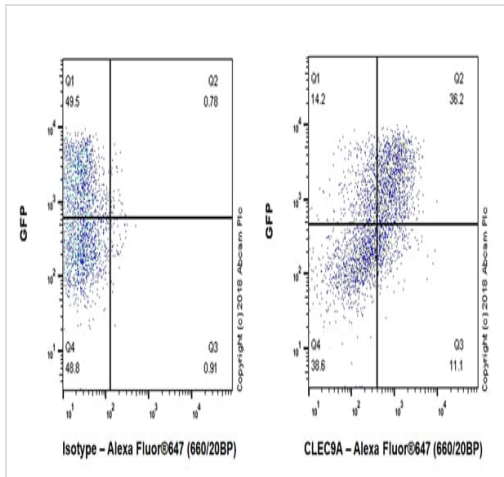
### Post-translational modifications

N-glycosylated.

### Cellular localization

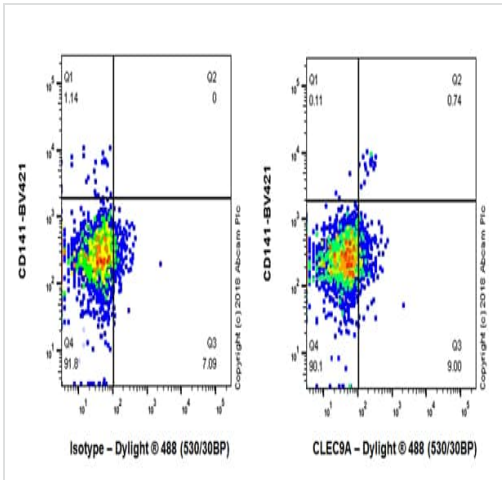
Membrane.

## Images



Flow cytometric analysis of HEK-293T (human epithelial cell line from embryonic kidney transformed with large T antigen) transfected with GFP-tagged CLEC9A overexpression construct, labeling CLEC9A with ab223188 at 1/500 dilution (Right) compared with a Rabbit IgG, monoclonal [EPR25A] - Isotype Control (ab172730) (Left). Goat anti rabbit IgG (Alexa Fluor® 647, ab150079) was used as the secondary antibody at 1/2000 dilution. Gated on viable cells.

Flow Cytometry - Anti-CLEC9A antibody  
[EPR22324] (ab223188)

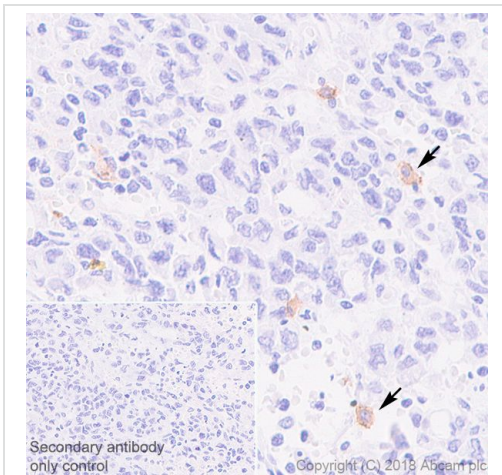


Flow Cytometry - Anti-CLEC9A antibody

[EPR22324] (ab223188)

Flow cytometric analysis of Human peripheral blood mononuclear cell (PBMC) cells labeling CLEC9A with ab223188 at 1/50 dilution. Cells were stained with Rabbit monoclonal IgG (ab172730) (Left) or ab223188 (Right). Then stained with Alexa Fluor® 647-conjugated anti-CD3, PE conjugated anti-HLA-DR and BV421 conjugated anti-CD141. Data shown was firstly gated out lymphocytes, then gated on viable CD3(-) HLA-DR (+) APC cells.

CLEC9A is selectively expressed on CD141+DC cells (Q2, ~0.05% in PBMC) and expression pattern was described in literature. (PMID:20479116).



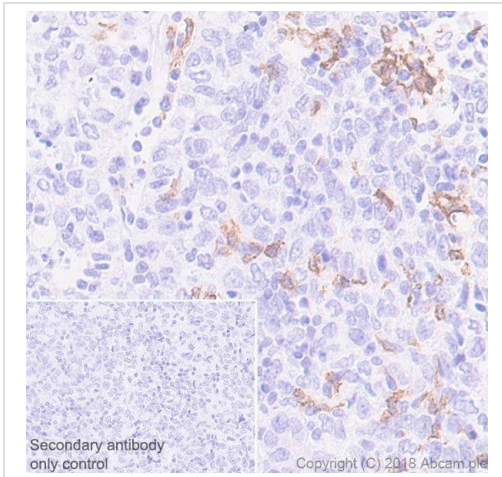
Immunohistochemistry (Formalin/PFA-fixed paraffin-embedded sections) - Anti-CLEC9A antibody

[EPR22324] (ab223188)

Immunohistochemical analysis of paraffin-embedded human gastric cancer tissue labeling CLEC9A with ab223188 at 1/1000 dilution, followed Goat Anti-Rabbit IgG H&L (HRP) Ready to use. Positive staining on dendritic cells (arrows) of human gastric cancer (PMID: 18408006; PMID: 20479116) is observed. Counterstained with hematoxylin.

Secondary antibody only control: Used PBS instead of primary antibody, secondary antibody is a Goat Anti-Rabbit IgG H&L (HRP) Ready to use.

Perform heat mediated antigen retrieval with Tris/EDTA buffer pH 9.0 before commencing with IHC staining protocol.

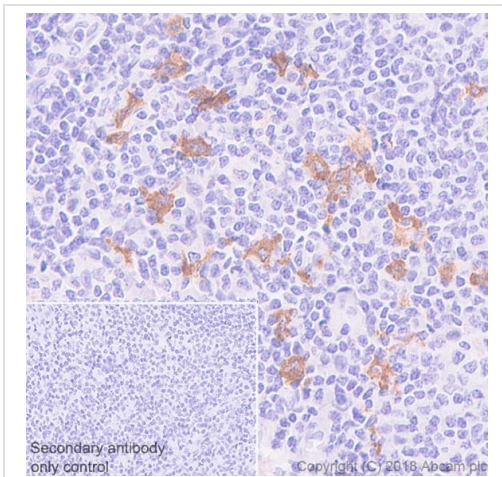


Immunohistochemistry (Formalin/PFA-fixed paraffin-embedded sections) - Anti-CLEC9A antibody [EPR22324] (ab223188)

Immunohistochemical analysis of paraffin-embedded human thymoma tissue labeling CLEC9A with ab223188 at 1/1000 dilution, followed by Goat Anti-Rabbit IgG H&L (HRP) Ready to use. Membranous staining on dendritic cells of human thymoma (PMID: 18408006; PMID: 20479116) is observed. Counterstained with hematoxylin.

Secondary antibody only control: Used PBS instead of primary antibody, secondary antibody is Goat Anti-Rabbit IgG H&L (HRP) Ready to use.

Perform heat mediated antigen retrieval with Tris/EDTA buffer pH 9.0 before commencing with IHC staining protocol.



Immunohistochemistry (Formalin/PFA-fixed paraffin-embedded sections) - Anti-CLEC9A antibody [EPR22324] (ab223188)

Immunohistochemical analysis of paraffin-embedded human tonsil tissue labeling CLEC9A with ab223188 at 1/1000 dilution, followed by Rabbit specific IHC polymer detection kit HRP/DAB Ready to use ([ab209101](#)). Positive staining on dendritic cells of human tonsil (PMID: 18408006; PMID: 20479116) is observed. Counterstained with hematoxylin.

Secondary antibody only control: Used PBS instead of primary antibody, secondary antibody is Rabbit specific IHC polymer detection kit HRP/DAB Ready to use ([ab209101](#)).

Perform heat mediated antigen retrieval with Tris/EDTA buffer pH 9.0 before commencing with IHC staining protocol.

### Why choose a recombinant antibody?



**Research with confidence**  
Consistent and reproducible results



**Long-term and scalable supply**  
Recombinant technology



**Success from the first experiment**  
Confirmed specificity



**Ethical standards compliant**  
Animal-free production

Anti-CLEC9A antibody [EPR22324] (ab223188)

**Please note:** All products are "FOR RESEARCH USE ONLY. NOT FOR USE IN DIAGNOSTIC PROCEDURES"

### Our Abpromise to you: Quality guaranteed and expert technical support

---

- Replacement or refund for products not performing as stated on the datasheet
- Valid for 12 months from date of delivery
- Response to your inquiry within 24 hours
- We provide support in Chinese, English, French, German, Japanese and Spanish
- Extensive multi-media technical resources to help you
- We investigate all quality concerns to ensure our products perform to the highest standards

If the product does not perform as described on this datasheet, we will offer a refund or replacement. For full details of the Abpromise, please visit <https://www.abcam.com/abpromise> or contact our technical team.

### Terms and conditions

---

- Guarantee only valid for products bought direct from Abcam or one of our authorized distributors