



Product datasheet

Anti-CLIC5 antibody [CLIC502] ab191102

1 References 1 Image

Overview

<b>Product name</b>	Anti-CLIC5 antibody [CLIC502]
<b>Description</b>	Mouse monoclonal [CLIC502] to CLIC5
<b>Host species</b>	Mouse
<b>Specificity</b>	ab191102 recognizes CLIC5a, a 32 kDa protein which is component of actin complexes. Cross reactivity with CLIC5b was not determined.
<b>Tested applications</b>	<b>Suitable for:</b> WB
<b>Species reactivity</b>	<b>Reacts with:</b> Human
<b>Immunogen</b>	Synthetic peptide corresponding to Human CLIC5 aa 150-250 conjugated to keyhole limpet haemocyanin. Database link: <a href="#">Q9NZA1-3</a>
	 <a href="#">Run BLAST with</a>  <a href="#">Run BLAST with</a>

General notes

The Life Science industry has been in the grips of a reproducibility crisis for a number of years. Abcam is leading the way in addressing this with our range of recombinant monoclonal antibodies and knockout edited cell lines for gold-standard validation. Please check that this product meets your needs before purchasing.

If you have any questions, special requirements or concerns, please send us an inquiry and/or contact our Support team ahead of purchase. Recommended alternatives for this product can be found below, along with publications, customer reviews and Q&As

Properties

<b>Form</b>	Liquid
<b>Storage instructions</b>	Shipped at 4°C. Store at +4°C short term (1-2 weeks). Upon delivery aliquot. Store at -20°C long term. Avoid freeze / thaw cycle.
<b>Storage buffer</b>	pH: 7.40 Preservative: 0.097% Sodium azide Constituent: 99% PBS
<b>Purity</b>	Protein A purified
<b>Purification notes</b>	ab191102 was purified from cell culture supernatant by protein-A affinity chromatography.
<b>Clonality</b>	Monoclonal
<b>Clone number</b>	CLIC502

<b>Isotype</b>	IgG2b
<b>Light chain type</b>	kappa

## Applications

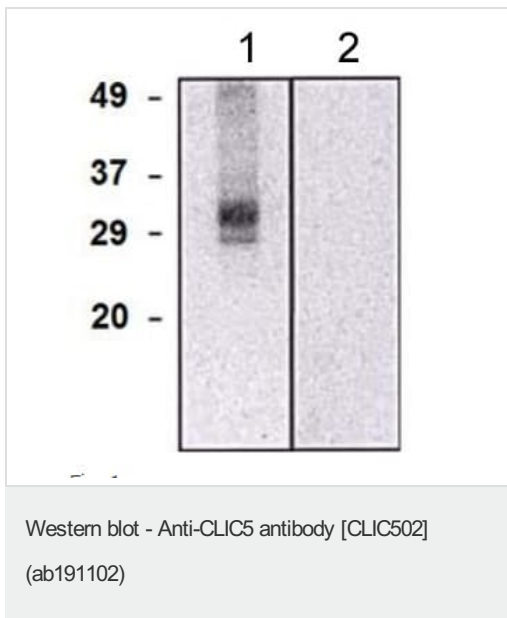
**The Abpromise guarantee** Our [Abpromise guarantee](#) covers the use of ab191102 in the following tested applications. The application notes include recommended starting dilutions; optimal dilutions/concentrations should be determined by the end user.

Application	Abreviews	Notes
WB		Use a concentration of 1 µg/ml. Predicted molecular weight: 28 kDa.

## Target

<b>Function</b>	Can insert into membranes and form poorly selective ion channels that may also transport chloride ions. May play a role in the regulation of transepithelial ion absorption and secretion. Required for normal formation of stereocilia in the inner ear and normal development of the organ of Corti (By similarity). Is required for the development and/or maintenance of the proper glomerular endothelial cell and podocyte architecture.
<b>Tissue specificity</b>	Isoform 1: Expressed in renal glomeruli endothelial cells and podocytes (at protein level).
<b>Sequence similarities</b>	Belongs to the chloride channel CLIC family. Contains 1 GST C-terminal domain.
<b>Domain</b>	Members of this family may change from a globular, soluble state to a state where the N-terminal domain is inserted into the membrane and functions as chloride channel. A conformation change of the N-terminal domain is thought to expose hydrophobic surfaces that trigger membrane insertion.
<b>Cellular localization</b>	Cytoplasm > cell cortex. Cytoplasm > cytoskeleton. Membrane. Associates with the cortical actin cytoskeleton. Exists both as soluble cytoplasmic protein and as membrane protein with probably a single transmembrane domain and Golgi apparatus. Cytoplasm > cytoskeleton > centrosome. Membrane. Colocalized with AKAP9 at the Golgi apparatus as well as, to a lesser extent, the centrosome. Exists both as soluble cytoplasmic protein and as membrane protein with probably a single transmembrane domain (By similarity). Colocalized with podocalyxin in renal glomeruli.

## Images



**All lanes :** Anti-CLIC5 antibody [CLIC502] (ab191102)

**Lane 1 :** HEK293 cell lysate, transfected with CLIC5

**Lane 2 :** HEK293 cell lysate

**Predicted band size:** 28 kDa

**Please note:** All products are "FOR RESEARCH USE ONLY. NOT FOR USE IN DIAGNOSTIC PROCEDURES"

### Our Abpromise to you: Quality guaranteed and expert technical support

---

- Replacement or refund for products not performing as stated on the datasheet
- Valid for 12 months from date of delivery
- Response to your inquiry within 24 hours
- We provide support in Chinese, English, French, German, Japanese and Spanish
- Extensive multi-media technical resources to help you
- We investigate all quality concerns to ensure our products perform to the highest standards

If the product does not perform as described on this datasheet, we will offer a refund or replacement. For full details of the Abpromise, please visit <https://www.abcam.com/abpromise> or contact our technical team.

### Terms and conditions

---

- Guarantee only valid for products bought direct from Abcam or one of our authorized distributors