


Product datasheet

Anti-CLN5 antibody ab229496

1 Image

Overview

Product name	Anti-CLN5 antibody
Description	Rabbit polyclonal to CLN5
Host species	Rabbit
Tested applications	Suitable for: WB
Species reactivity	Reacts with: Human Predicted to work with: Sheep, Cow, Dog 
Immunogen	Recombinant fragment within Human CLN5 (internal sequence). The exact sequence is proprietary. Database link: O75503
Positive control	WB: HEK-293T, A431, HeLa and HepG2 whole cell extracts.

Properties

Form	Liquid
Storage instructions	Shipped at 4°C. Store at +4°C short term (1-2 weeks). Upon delivery aliquot. Store at -20°C long term. Avoid freeze / thaw cycle.
Storage buffer	pH: 7.00 Preservative: 0.025% Proclin Constituents: PBS, 20% Glycerol
Purity	Immunogen affinity purified
Clonality	Polyclonal
Isotype	IgG

Applications

Our [Abpromise guarantee](#) covers the use of **ab229496** in the following tested applications.

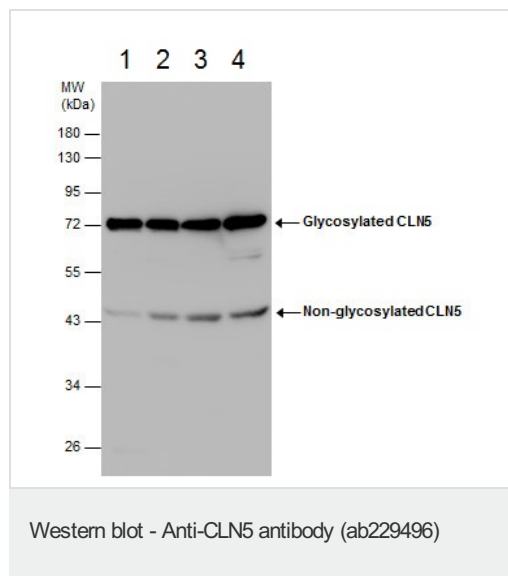
The application notes include recommended starting dilutions; optimal dilutions/concentrations should be determined by the end user.

Application	Abreviews	Notes
WB		1/500 - 1/3000. Predicted molecular weight: 41 kDa.

Target

Tissue specificity	Ubiquitous.
Involvement in disease	Defects in CLN5 are the cause of neuronal ceroid lipofuscinosis type 5 (CLN5) [MIM:256731]; also known as Finnish variant late-infantile neuronal ceroid lipofuscinosis (vLINCL). A form of neuronal ceroid lipofuscinosis. Neuronal ceroid lipofuscinoses are progressive neurodegenerative, lysosomal storage diseases characterized by intracellular accumulation of autofluorescent liposomal material, and clinically by seizures, dementia, visual loss, and/or cerebral atrophy. The lipopigment patterns observed most often in neuronal ceroid lipofuscinosis type 5 comprise mixed combinations of granular, curvilinear, and fingerprint profiles.
Sequence similarities	Belongs to the CLN5 family.
Post-translational modifications	Glycosylated.
Cellular localization	Lysosome.

Images



All lanes : Anti-CLN5 antibody (ab229496) at 1/1000 dilution

Lane 1 : HEK-293T (human epithelial cell line from embryonic kidney transformed with large T antigen) whole cell extract

Lane 2 : A431 (human epidermoid carcinoma cell line) whole cell extract

Lane 3 : HeLa (human epithelial cell line from cervix adenocarcinoma) whole cell extract

Lane 4 : HepG2 (human liver hepatocellular carcinoma cell line) whole cell extract

Lysates/proteins at 30 µg per lane.

Predicted band size: 41 kDa

10% SDS-PAGE gel.

Please note: All products are "FOR RESEARCH USE ONLY. NOT FOR USE IN DIAGNOSTIC PROCEDURES"

Our Abpromise to you: Quality guaranteed and expert technical support

- Replacement or refund for products not performing as stated on the datasheet
- Valid for 12 months from date of delivery

- Response to your inquiry within 24 hours
- We provide support in Chinese, English, French, German, Japanese and Spanish
- Extensive multi-media technical resources to help you
- We investigate all quality concerns to ensure our products perform to the highest standards

If the product does not perform as described on this datasheet, we will offer a refund or replacement. For full details of the Abpromise, please visit <https://www.abcam.com/abpromise> or contact our technical team.

Terms and conditions

- Guarantee only valid for products bought direct from Abcam or one of our authorized distributors