

Product datasheet

Anti-CLPP antibody [EPR7133] - BSA and Azide free ab236064

Recombinant RabMAb

1 References 6 Images

Overview

Product name	Anti-CLPP antibody [EPR7133] - BSA and Azide free
Description	Rabbit monoclonal [EPR7133] to CLPP - BSA and Azide free
Host species	Rabbit
Tested applications	Suitable for: IHC-P, IP, WB
Species reactivity	Reacts with: Mouse, Rat, Human
Immunogen	Synthetic peptide. This information is proprietary to Abcam and/or its suppliers.
Positive control	WB: Fetal muscle lysate; Saos-2, A431, HEK-293T, K562 and A549 cell lysates.
General notes	<p>ab236064 is the carrier-free version of ab124822.</p> <p>Our carrier-free antibodies are typically supplied in a PBS-only formulation, purified and free of BSA, sodium azide and glycerol. The carrier-free buffer and high concentration allow for increased conjugation efficiency.</p> <p>This conjugation-ready format is designed for use with fluorochromes, metal isotopes, oligonucleotides, and enzymes, which makes them ideal for antibody labelling, functional and cell-based assays, flow-based assays (e.g. mass cytometry) and Multiplex Imaging applications.</p> <p>Use our conjugation kits for antibody conjugates that are ready-to-use in as little as 20 minutes with <1 minute hands-on-time and 100% antibody recovery: available for fluorescent dyes, HRP, biotin and gold.</p> <p>This product is compatible with the Maxpar[®] Antibody Labeling Kit from Fluidigm, without the need for antibody preparation. Maxpar[®] is a trademark of Fluidigm Canada Inc.</p> <p>This product is a recombinant monoclonal antibody, which offers several advantages including:</p> <ul style="list-style-type: none"> - High batch-to-batch consistency and reproducibility - Improved sensitivity and specificity - Long-term security of supply - Animal-free production <p>For more information see here.</p> <p>Our RabMAb[®] technology is a patented hybridoma-based technology for making rabbit monoclonal antibodies. For details on our patents, please refer to RabMAb[®] patents.</p>

Properties

Form	Liquid
Storage instructions	Shipped at 4°C. Store at +4°C. Do Not Freeze.
Storage buffer	pH: 7.2 Constituent: PBS
Carrier free	Yes
Purity	Protein A purified
Clonality	Monoclonal
Clone number	EPR7133
Isotype	IgG

Applications

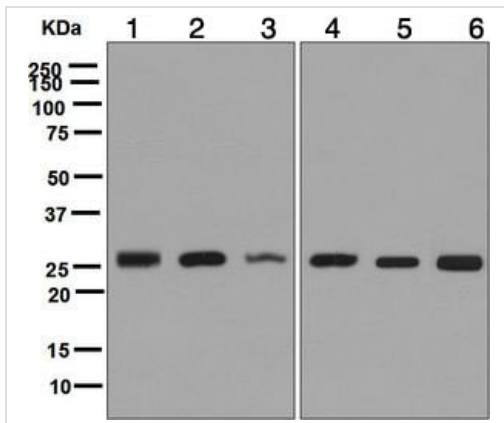
The Abpromise guarantee Our [Abpromise guarantee](#) covers the use of ab236064 in the following tested applications. The application notes include recommended starting dilutions; optimal dilutions/concentrations should be determined by the end user.

Application	Abreviews	Notes
IHC-P		Use at an assay dependent concentration. Perform heat mediated antigen retrieval with citrate buffer pH 6 before commencing with IHC staining protocol. See IHC antigen retrieval protocols .
IP		Use at an assay dependent concentration.
WB		Use at an assay dependent concentration. Detects a band of approximately 26 kDa (predicted molecular weight: 30 kDa).

Target

Function	Clp cleaves peptides in various proteins in a process that requires ATP hydrolysis. Clp may be responsible for a fairly general and central housekeeping function rather than for the degradation of specific substrates.
Tissue specificity	Predominantly expressed in skeletal muscle. Intermediate levels in heart, liver and pancreas. Low in brain, placenta, lung and kidney.
Sequence similarities	Belongs to the peptidase S14 family.
Cellular localization	Mitochondrion matrix.

Images



Western blot - Anti-CLPP antibody [EPR7133] - BSA and Azide free (ab236064)

All lanes : Anti-CLPP antibody [EPR7133] ([ab124822](#)) at 1/1000 dilution

Lane 1 : Fetal muscle lysate

Lane 2 : Saos-2 (Human osteosarcoma cell line) cell lysate

Lane 3 : A431 (Human epidermoid carcinoma cell line) cell lysate

Lane 4 : HEK-293T (human epithelial cell line from embryonic kidney transformed with large T antigen) cell lysate

Lane 6 : A549 (Human lung carcinoma cell line) cell lysate

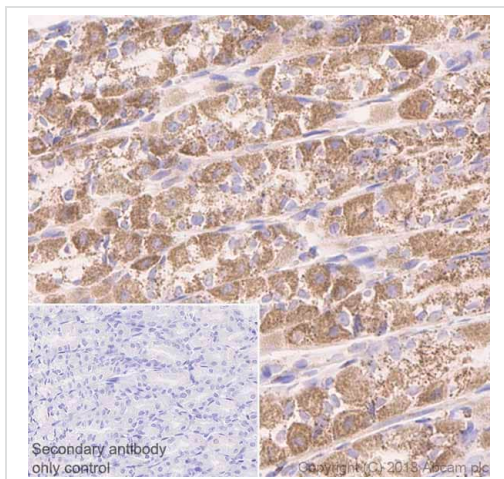
Lysates/proteins at 10 µg per lane.

Secondary

All lanes : HRP labelled goat anti-rabbit at 1/2000 dilution

Predicted band size: 30 kDa

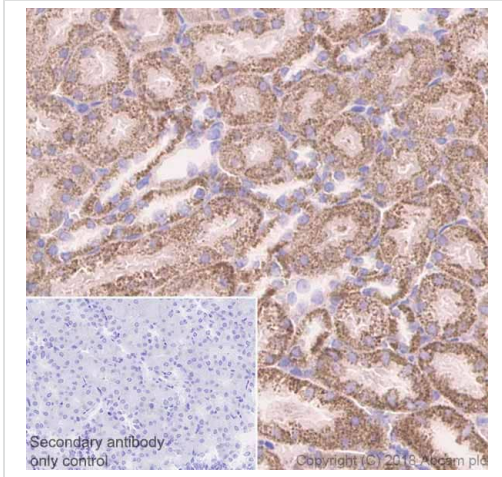
This data was developed using the same antibody clone in a different buffer formulation containing PBS, BSA, glycerol, and sodium azide ([ab124822](#)).



Immunohistochemistry (Formalin/PFA-fixed paraffin-embedded sections) - Anti-CLPP antibody [EPR7133] - BSA and Azide free (ab236064)

Immunohistochemistry (Formalin/PFA-fixed paraffin-embedded sections) analysis of Rat stomach tissue sections labeling CLPP with Purified [ab124822](#) at 1:50 dilution (2 µg/ml). Heat mediated antigen retrieval was performed using [ab93684](#) (Tris/EDTA buffer, pH 9.0). ImmunoHistoProbe one step HRP Polymer (ready to use) was used as the secondary antibody. Negative control: PBS instead of the primary antibody. Hematoxylin was used as a counterstain.

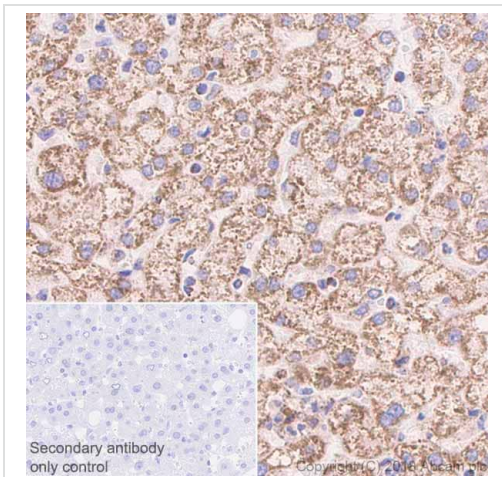
This data was developed using the same antibody clone in a different buffer formulation containing PBS, BSA, glycerol, and sodium azide ([ab124822](#)).



Immunohistochemistry (Formalin/PFA-fixed paraffin-embedded sections) - Anti-CLPP antibody [EPR7133] - BSA and Azide free (ab236064)

Immunohistochemistry (Formalin/PFA-fixed paraffin-embedded sections) analysis of Mouse kidney tissue sections labeling CLPP with Purified [ab124822](#) at 1:50 dilution (2 µg/ml). Heat mediated antigen retrieval was performed using [ab93684](#) (Tris/EDTA buffer, pH 9.0). ImmunoHistoProbe one step HRP Polymer (ready to use) was used as the secondary antibody. Negative control: PBS instead of the primary antibody. Hematoxylin was used as a counterstain.

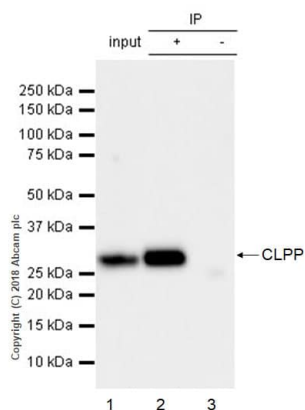
This data was developed using the same antibody clone in a different buffer formulation containing PBS, BSA, glycerol, and sodium azide ([ab124822](#)).



Immunohistochemistry (Formalin/PFA-fixed paraffin-embedded sections) - Anti-CLPP antibody [EPR7133] - BSA and Azide free (ab236064)

Immunohistochemistry (Formalin/PFA-fixed paraffin-embedded sections) analysis of Human liver tissue sections labeling CLPP with Purified [ab124822](#) at 1:50 dilution (2 µg/ml). Heat mediated antigen retrieval was performed using [ab93684](#) (Tris/EDTA buffer, pH 9.0). ImmunoHistoProbe one step HRP Polymer (ready to use) was used as the secondary antibody. Negative control: PBS instead of the primary antibody. Hematoxylin was used as a counterstain.

This data was developed using the same antibody clone in a different buffer formulation containing PBS, BSA, glycerol, and sodium azide ([ab124822](#)).



Immunoprecipitation - Anti-CLPP antibody
[EPR7133] - BSA and Azide free (ab236064)

ab124822 (purified) at 1:20 dilution (2µg) immunoprecipitating CLPP in K562 whole cell lysate.

Lane 1 (input): K562 (Human chronic myelogenous leukemia lymphoblast) whole cell lysate 10µg

Lane 2 (+): **ab124822** & K562 whole cell lysate

Lane 3 (-): Rabbit monoclonal IgG (**ab172730**) instead of **ab124822** in K562 whole cell lysate

For western blotting, VeriBlot for IP Detection Reagent (HRP) (**ab131366**) was used for detection at 1:5000 dilution.

Blocking and diluting buffer: 5% NFD/MTBST.

This data was developed using the same antibody clone in a different buffer formulation containing PBS, BSA, glycerol, and sodium azide (**ab124822**).

Why choose a recombinant antibody?



Research with confidence
Consistent and reproducible results



Long-term and scalable supply
Recombinant technology



Success from the first experiment
Confirmed specificity



Ethical standards compliant
Animal-free production

Anti-CLPP antibody [EPR7133] - BSA and Azide free (ab236064)

Please note: All products are "FOR RESEARCH USE ONLY. NOT FOR USE IN DIAGNOSTIC PROCEDURES"

Our Abpromise to you: Quality guaranteed and expert technical support

- Replacement or refund for products not performing as stated on the datasheet
- Valid for 12 months from date of delivery
- Response to your inquiry within 24 hours
- We provide support in Chinese, English, French, German, Japanese and Spanish
- Extensive multi-media technical resources to help you
- We investigate all quality concerns to ensure our products perform to the highest standards

If the product does not perform as described on this datasheet, we will offer a refund or replacement. For full details of the Abpromise, please visit <https://www.abcam.com/abpromise> or contact our technical team.

Terms and conditions

- Guarantee only valid for products bought direct from Abcam or one of our authorized distributors