

Product datasheet

Anti-CMTM6 antibody [EPR23015-45] ab264067

Recombinant RabMAb

6 Images

Overview

<b>Product name</b>	Anti-CMTM6 antibody [EPR23015-45]
<b>Description</b>	Rabbit monoclonal [EPR23015-45] to CMTM6
<b>Host species</b>	Rabbit
<b>Tested applications</b>	<b>Suitable for:</b> Flow Cyt (Intra), IHC-P, WB <b>Unsuitable for:</b> ICC/IF
<b>Species reactivity</b>	<b>Reacts with:</b> Human
<b>Immunogen</b>	Synthetic peptide. This information is proprietary to Abcam and/or its suppliers.
<b>Positive control</b>	WB: MDA-MB-231 and BxPC-3 whole cell lysates; human tonsil tissue lysate. IHC-P: Human tonsil, thyroid cancer and pancreatic cancer tissue. Flow Cyt (intra): MDA-MB-231 cells.
<b>General notes</b>	This product is a recombinant monoclonal antibody, which offers several advantages including: <ul style="list-style-type: none"> <li>- High batch-to-batch consistency and reproducibility</li> <li>- Improved sensitivity and specificity</li> <li>- Long-term security of supply</li> <li>- Animal-free production</li> </ul> For more information <a href="#">see here</a> . Our RabMAb <sup>®</sup> technology is a patented hybridoma-based technology for making rabbit monoclonal antibodies. For details on our patents, please refer to <a href="#">RabMAb<sup>®</sup> patents</a> .

Properties

<b>Form</b>	Liquid
<b>Storage instructions</b>	Shipped at 4°C. Store at +4°C short term (1-2 weeks). Upon delivery aliquot. Store at -20°C long term. Avoid freeze / thaw cycle.
<b>Storage buffer</b>	pH: 7.2 Preservative: 0.01% Sodium azide Constituents: PBS, 40% Glycerol (glycerin, glycerine), 0.05% BSA
<b>Purity</b>	Protein A purified
<b>Clonality</b>	Monoclonal
<b>Clone number</b>	EPR23015-45

Isotype

IgG

## Applications

### The Abpromise guarantee

Our [Abpromise guarantee](#) covers the use of ab264067 in the following tested applications.

The application notes include recommended starting dilutions; optimal dilutions/concentrations should be determined by the end user.

Application	Abreviews	Notes
Flow Cyt (Intra)		1/500.
IHC-P		1/2000. Perform heat mediated antigen retrieval with Tris/EDTA buffer pH 9.0 before commencing with IHC staining protocol.
WB		1/1000. Predicted molecular weight: 20 kDa.

### Application notes

Is unsuitable for ICC/IF.

## Target

### Tissue specificity

Expressed in the leukocytes, placenta and testis.

### Sequence similarities

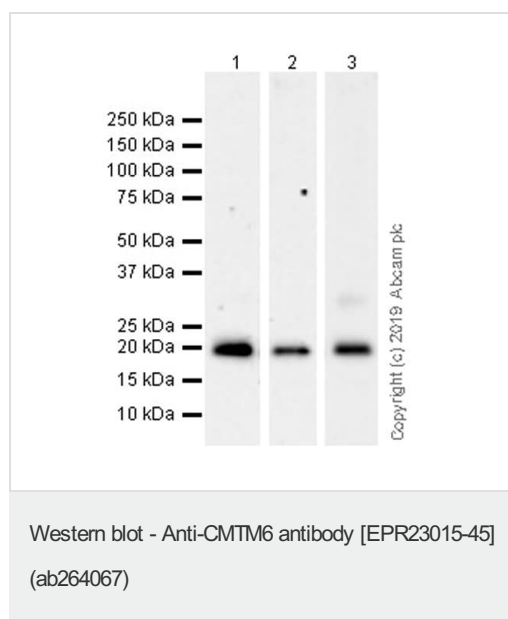
Belongs to the chemokine-like factor family.

Contains 1 MARVEL domain.

### Cellular localization

Membrane.

## Images



**All lanes** : Anti-CMTM6 antibody [EPR23015-45] (ab264067) at 1/1000 dilution

**Lane 1** : MDA-MB-231 (human breast adenocarcinoma epithelial cell), whole cell lysate

**Lane 2** : Human tonsil tissue lysate

**Lane 3** : BxPC-3 (human pancreas adenocarcinoma epithelial cell), whole cell lysate

Lysates/proteins at 20 µg per lane.

### Secondary

**All lanes** : Goat Anti-Rabbit IgG H&L (HRP) (ab97051) at 1/100000 dilution

**Predicted band size:** 20 kDa

**Observed band size:** 20 kDa

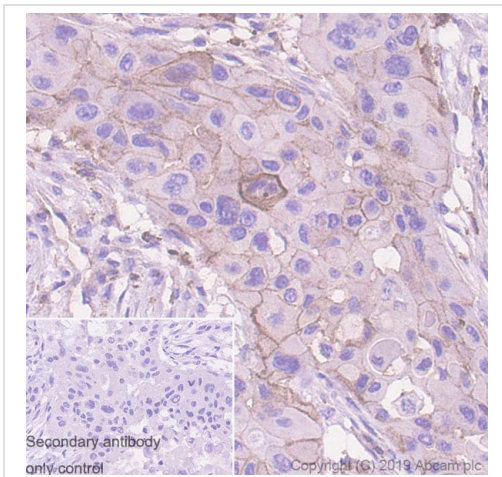
Blocking and dilution buffer: 5% NFD/MTBST.

Exposure times.

Lanes 1-2: 3 minutes

Lane 3: 48 seconds.

The expression profile/ molecular weight observed is consistent with what has been described in the literature (PMID: 28813417).

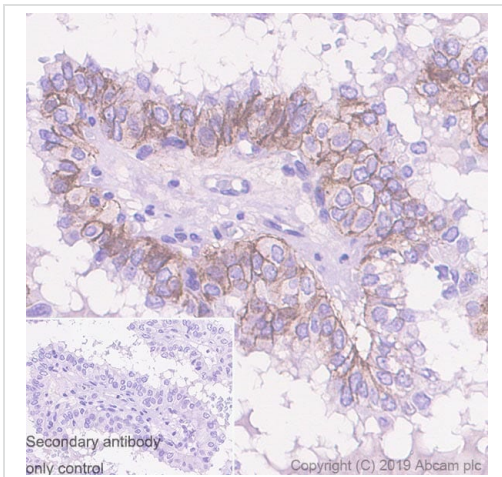


Immunohistochemistry (Formalin/PFA-fixed paraffin-embedded sections) - Anti-CMTM6 antibody [EPR23015-45] (ab264067)

Immunohistochemical analysis of paraffin-embedded Human pancreatic cancer tissue labeling CMTM6 with ab264067 at 1/2000 dilution (0.24 ug/ml) followed by a ready to use Rabbit specific IHC polymer detection kit HRP/DAB (ab209101). Membranous staining on human pancreatic cancer (PMID/ 28813417) The section was incubated with ab264067 for 30 mins at room temperature. The immunostaining was performed on a Leica Biosystems BOND® RX instrument Counterstained with Hematoxylin.

Secondary antibody only control/ Secondary antibody is a ready to use Rabbit specific IHC polymer detection kit HRP/DAB (ab209101).

Heat mediated antigen retrieval with Tris-EDTA buffer (pH 9.0, epitope retrieval solution 2) for 20 mins.

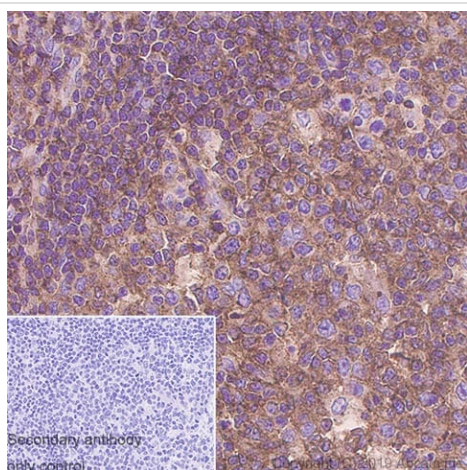


Immunohistochemistry (Formalin/PFA-fixed paraffin-embedded sections) - Anti-CMTM6 antibody [EPR23015-45] (ab264067)

Immunohistochemical analysis of paraffin-embedded Human thyroid cancer tissue labeling CMTM6 with ab264067 at 1/2000 dilution (0.24 ug/ml) followed by a ready to use Rabbit specific IHC polymer detection kit HRP/DAB (ab209101). Membranous staining on human thyroid cancer (PMID: 28813410) The section was incubated with ab264067 for 30 mins at room temperature. The immunostaining was performed on a Leica Biosystems BOND™ RX instrument Counterstained with Hematoxylin.

Secondary antibody only control/ Secondary antibody is a ready to use Rabbit specific IHC polymer detection kit HRP/DAB (ab209101).

Heat mediated antigen retrieval with Tris-EDTA buffer (pH 9.0, epitope retrieval solution 2) for 20 mins.

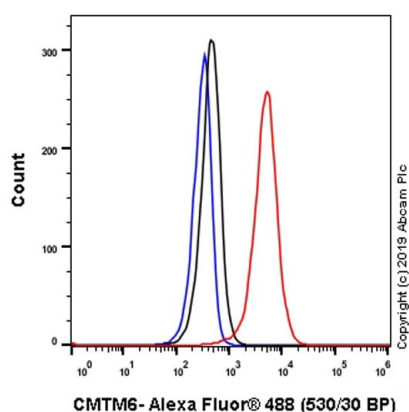


Immunohistochemistry (Formalin/PFA-fixed paraffin-embedded sections) - Anti-CMTM6 antibody [EPR23015-45] (ab264067)

Immunohistochemical analysis of paraffin-embedded Human tonsil tissue labeling CMTM6 with ab264067 at 1/2000 dilution (0.24 ug/ml) followed by a ready to use Rabbit specific IHC polymer detection kit HRP/DAB (ab209101). Positive staining on human tonsil. The section was incubated with ab264067 for 30 mins at room temperature. The immunostaining was performed on a Leica Biosystems BOND® RX instrument Counterstained with Hematoxylin.

Secondary antibody only control/ Secondary antibody is a ready to use Rabbit specific IHC polymer detection kit HRP/DAB (ab209101).

Heat mediated antigen retrieval with Tris-EDTA buffer (pH 9.0, epitope retrieval solution 2) for 20 mins.



Flow Cytometry (Intracellular) - Anti-CMTM6 antibody [EPR23015-45] (ab264067)

Intracellular flow cytometric analysis of 4% paraformaldehyde fixed, 90% methanol permeabilized MDA-MB-231 (human breast adenocarcinoma epithelial cell) cells labelling CMTM6 with ab264067 at 1/500 dilution (Red) compared with a Rabbit monoclonal IgG (ab172730) isotype control (black) and an unlabelled control (cells without incubation with primary antibody and secondary antibody) (Blue). A Goat anti rabbit IgG (Alexa Fluor® 488, ab150077) at 1/2000 dilution was used as the secondary antibody.

### Why choose a recombinant antibody?



**Research with confidence**  
Consistent and reproducible results



**Long-term and scalable supply**  
Recombinant technology



**Success from the first experiment**  
Confirmed specificity



**Ethical standards compliant**  
Animal-free production

Anti-CMTM6 antibody [EPR23015-45] (ab264067)

**Please note:** All products are "FOR RESEARCH USE ONLY. NOT FOR USE IN DIAGNOSTIC PROCEDURES"

### Our Abpromise to you: Quality guaranteed and expert technical support

---

- Replacement or refund for products not performing as stated on the datasheet
- Valid for 12 months from date of delivery
- Response to your inquiry within 24 hours
- We provide support in Chinese, English, French, German, Japanese and Spanish
- Extensive multi-media technical resources to help you
- We investigate all quality concerns to ensure our products perform to the highest standards

If the product does not perform as described on this datasheet, we will offer a refund or replacement. For full details of the Abpromise, please visit <https://www.abcam.com/abpromise> or contact our technical team.

### Terms and conditions

---

- Guarantee only valid for products bought direct from Abcam or one of our authorized distributors