

Product datasheet

Anti-CNDP1/CN1 antibody ab155315

2 Images

Overview

<b>Product name</b>	Anti-CNDP1/CN1 antibody
<b>Description</b>	Rabbit polyclonal to CNDP1/CN1
<b>Host species</b>	Rabbit
<b>Tested applications</b>	<b>Suitable for:</b> WB, IHC-P
<b>Species reactivity</b>	<b>Reacts with:</b> Human
<b>Immunogen</b>	Recombinant fragment corresponding to Human CNDP1/CN1 aa 185-448. Database link: <a href="#">Q96KN2</a>
<b>Positive control</b>	293T and A431 whole cell lysates; Human Gastric carcinoma tissue.
<b>General notes</b>	This product was previously labelled as CNDP1

Properties

<b>Form</b>	Liquid
<b>Storage instructions</b>	Shipped at 4°C. Upon delivery aliquot. Store at -20°C or -80°C. Avoid freeze / thaw cycle.
<b>Storage buffer</b>	pH: 7.00 Preservative: 0.01% Thimerosal (merthiolate) Constituents: 1.21% Tris, 0.75% Glycine, 20% Glycerol
<b>Purity</b>	Immunogen affinity purified
<b>Clonality</b>	Polyclonal
<b>Isotype</b>	IgG

Applications

Our [Abpromise guarantee](#) covers the use of **ab155315** in the following tested applications.

The application notes include recommended starting dilutions; optimal dilutions/concentrations should be determined by the end user.

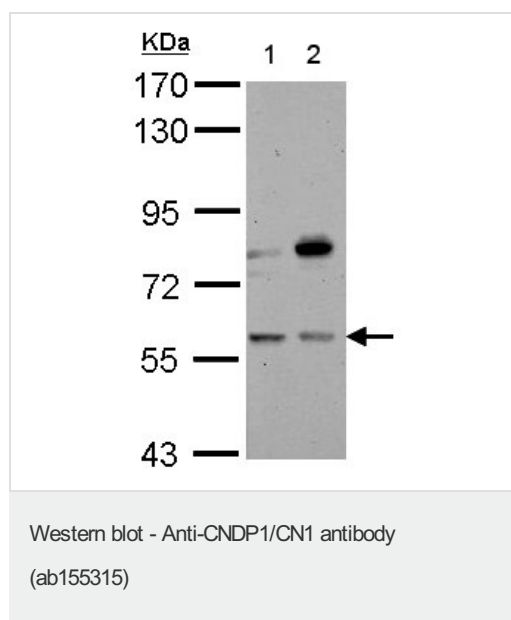
Application	Abreviews	Notes
WB		1/500 - 1/3000. Predicted molecular weight: 57 kDa.

Application	Abreviews	Notes
IHC-P		1/100 - 1/1000.

## Target

<b>Tissue specificity</b>	Found in serum and adult nervous central system. Absent in serum from patients with homocarnosinosis.
<b>Sequence similarities</b>	Belongs to the peptidase M20A family.
<b>Cellular localization</b>	Secreted.

## Images



**All lanes :** Anti-CNDP1/CN1 antibody (ab155315) at 1/1000 dilution

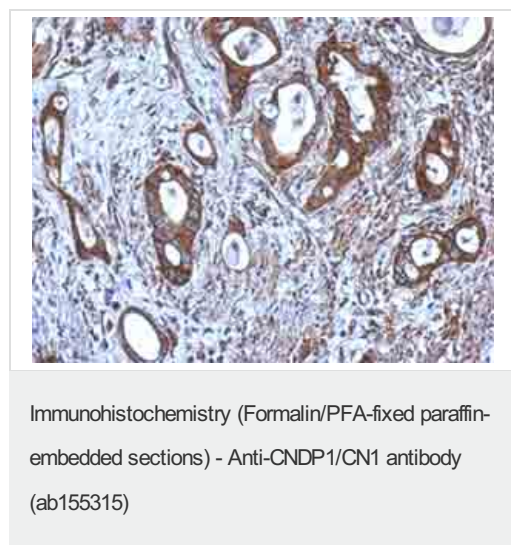
**Lane 1 :** 293T whole cell lysate

**Lane 2 :** A431 whole cell lysate

Lysates/proteins at 30 µg per lane.

**Predicted band size:** 57 kDa

7.5% SDS PAGE



Immunohistochemical analysis of paraffin-embedded Human Gastric carcinoma tissue, labeling CNDP1/CN1 with ab155315 at 1/500 dilution.

## **Our Abpromise to you: Quality guaranteed and expert technical support**

---

- Replacement or refund for products not performing as stated on the datasheet
- Valid for 12 months from date of delivery
- Response to your inquiry within 24 hours
  
- We provide support in Chinese, English, French, German, Japanese and Spanish
- Extensive multi-media technical resources to help you
- We investigate all quality concerns to ensure our products perform to the highest standards

If the product does not perform as described on this datasheet, we will offer a refund or replacement. For full details of the Abpromise, please visit <https://www.abcam.com/abpromise> or contact our technical team.

## **Terms and conditions**

---

- Guarantee only valid for products bought direct from Abcam or one of our authorized distributors