

Product datasheet

Anti-COG4 antibody ab242043

1 Image

Overview

---

<b>Product name</b>	Anti-COG4 antibody
<b>Description</b>	Rabbit polyclonal to COG4
<b>Host species</b>	Rabbit
<b>Tested applications</b>	<b>Suitable for:</b> IP
<b>Species reactivity</b>	<b>Reacts with:</b> Mouse, Human
<b>Immunogen</b>	Synthetic peptide within Human COG4 aa 1-50. The exact sequence is proprietary. Database link: <a href="#">Q9H9E3</a>
<b>Positive control</b>	IP: COG4 IP in HEK-293T whole cell lysate.
<b>General notes</b>	<p>Reproducibility is key to advancing scientific discovery and accelerating scientists' next breakthrough.</p> <p>Abcam is leading the way with our range of recombinant antibodies, knockout-validated antibodies and knockout cell lines, all of which support improved reproducibility.</p> <p>We are also planning to innovate the way in which we present recommended applications and species on our product datasheets, so that only applications &amp; species that have been tested in our own labs, our suppliers or by selected trusted collaborators are covered by our Abpromise™ guarantee.</p> <p>In preparation for this, we have started to update the applications &amp; species that this product is Abpromise guaranteed for.</p> <p>We are also updating the applications &amp; species that this product has been “predicted to work with,” however this information is not covered by our Abpromise guarantee.</p> <p>Applications &amp; species from publications and Abreviews that have not been tested in our own labs or in those of our suppliers are not covered by the Abpromise guarantee.</p> <p>Please check that this product meets your needs before purchasing. If you have any questions, special requirements or concerns, please send us an inquiry and/or contact our Support team ahead of purchase. Recommended alternatives for this product can be found below, as well as customer reviews and Q&amp;As.</p>

Properties

---

<b>Form</b>	Liquid
<b>Storage instructions</b>	Shipped at 4°C. Store at +4°C short term (1-2 weeks). Upon delivery aliquot. Store at -20°C long

term. Avoid freeze / thaw cycle.

### Storage buffer

pH: 7  
Preservative: 0.09% Sodium azide  
Constituent: Tris citrate/phosphate

**Purity** pH 7-8  
Affinity purified

**Purification notes** Antibody was affinity purified using an epitope specific to COG4 immobilized on solid support

**Clonality** Polyclonal

**Isotype** IgG

### Applications

Our [Abpromise guarantee](#) covers the use of **ab242043** in the following tested applications.

The application notes include recommended starting dilutions; optimal dilutions/concentrations should be determined by the end user.

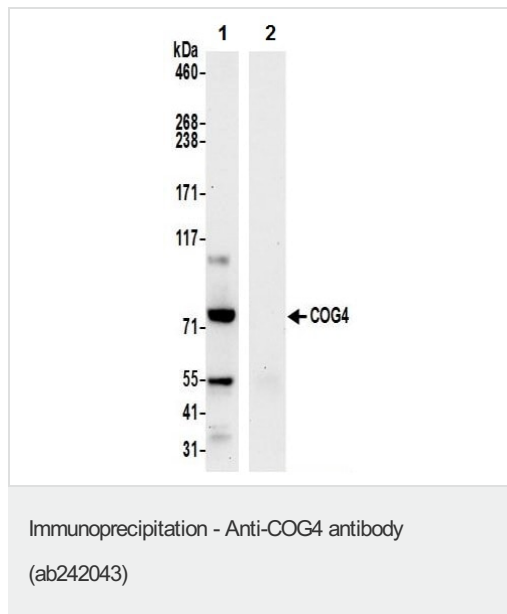
Application	Abreviews	Notes
IP		Use at 2-10 µg/mg of lysate.

### Target

**Relevance** COG4 is a component of the conserved oligomeric Golgi (COG) complex which is composed of eight different subunits and is required for normal Golgi morphology and localization. COG4 is required for normal Golgi function.

**Cellular localization** Golgi apparatus membrane; Peripheral membrane protein; Cytoplasmic side.

### Images



COG4 was immunoprecipitated from HEK-293T (human epithelial cell line from embryonic kidney transformed with large T antigen) whole cell lysate (1mg per IP reaction; 20% of IP loaded) using ab242043 at 6 µg per reaction. Western blot was performed on the immunoprecipitate using ab242043 at 1 µg/mL.

**Lane 1:** ab242043 IP in HEK-293T whole cell lysate.

**Lane 2:** Control IgG IP in HEK-293T whole cell lysate.

Detection: Chemiluminescence with an exposure time of 30 seconds.

Prepared using NETN lysis buffer.

**Please note:** All products are "FOR RESEARCH USE ONLY. NOT FOR USE IN DIAGNOSTIC PROCEDURES"

### **Our Abpromise to you: Quality guaranteed and expert technical support**

---

- Replacement or refund for products not performing as stated on the datasheet
- Valid for 12 months from date of delivery
- Response to your inquiry within 24 hours
  
- We provide support in Chinese, English, French, German, Japanese and Spanish
- Extensive multi-media technical resources to help you
- We investigate all quality concerns to ensure our products perform to the highest standards

If the product does not perform as described on this datasheet, we will offer a refund or replacement. For full details of the Abpromise, please visit <https://www.abcam.com/abpromise> or contact our technical team.

### **Terms and conditions**

---

- Guarantee only valid for products bought direct from Abcam or one of our authorized distributors