

Product datasheet

Anti-COL11A1 antibody ab64883

★★★★☆ 4 Abreviews 13 References 1 Image

Overview

Product name	Anti-COL11A1 antibody
Description	Rabbit polyclonal to COL11A1
Host species	Rabbit
Tested applications	Suitable for: WB
Species reactivity	Reacts with: Mouse, Human
Immunogen	Synthetic peptide from an internal sequence of Human COL11A1.
General notes	<p>Reproducibility is key to advancing scientific discovery and accelerating scientists' next breakthrough.</p> <p>Abcam is leading the way with our range of recombinant antibodies, knockout-validated antibodies and knockout cell lines, all of which support improved reproducibility.</p> <p>We are also planning to innovate the way in which we present recommended applications and species on our product datasheets, so that only applications & species that have been tested in our own labs, our suppliers or by selected trusted collaborators are covered by our Abpromise™ guarantee.</p> <p>In preparation for this, we have started to update the applications & species that this product is Abpromise guaranteed for.</p> <p>We are also updating the applications & species that this product has been “predicted to work with,” however this information is not covered by our Abpromise guarantee.</p> <p>Applications & species from publications and Abreviews that have not been tested in our own labs or in those of our suppliers are not covered by the Abpromise guarantee.</p> <p>Please check that this product meets your needs before purchasing. If you have any questions, special requirements or concerns, please send us an inquiry and/or contact our Support team ahead of purchase. Recommended alternatives for this product can be found below, as well as customer reviews and Q&As.</p>

Properties

Form	Liquid
Storage instructions	Shipped at 4°C. Store at -20°C. Stable for 12 months at -20°C.
Storage buffer	pH: 7.40 Preservative: 0.02% Sodium azide

	Constituents: PBS, 50% Glycerol, 0.87% Sodium chloride
Purity	Immunogen affinity purified
Clonality	Polyclonal
Isotype	IgG

Applications

Our [Abpromise guarantee](#) covers the use of **ab64883** in the following tested applications.

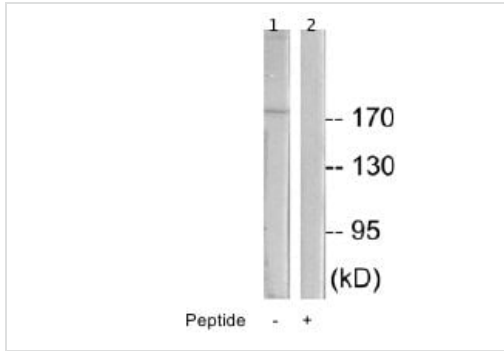
The application notes include recommended starting dilutions; optimal dilutions/concentrations should be determined by the end user.

Application	Abreviews	Notes
WB		1/500 - 1/1000. Detects a band of approximately >170 kDa (predicted molecular weight: 181 kDa).

Target

Function	May play an important role in fibrillogenesis by controlling lateral growth of collagen II fibrils.
Tissue specificity	Cartilage, placenta and some tumor or virally transformed cell lines. Isoforms using exon IIA or IIB are found in the cartilage while isoforms using only exon IIB are found in the tendon.
Involvement in disease	<p>Defects in COL11A1 are the cause of Stickler syndrome type 2 (STL2) [MIM:604841]; also known as Stickler syndrome vitreous type 2. STL2 is an autosomal dominant form of Stickler syndrome, an inherited disorder that associates ocular signs with more or less complete forms of Pierre Robin sequence, bone disorders and sensorineural deafness. Ocular disorders may include juvenile cataract, myopia, strabismus, vitreoretinal or chorioretinal degeneration, retinal detachment, and chronic uveitis. Robin sequence includes an opening in the roof of the mouth (a cleft palate), a large tongue (macroglossia), and a small lower jaw (micrognathia). Bones are affected by slight platyspondylisis and large, often defective epiphyses. Juvenile joint laxity is followed by early signs of arthrosis. The degree of hearing loss varies among affected individuals and may become more severe over time. Syndrome expressivity is variable.</p> <p>Defects in COL11A1 are the cause of Marshall syndrome (MARSHS) [MIM:154780]. It is an autosomal dominant disorder with ocular, orofacial, auditory and skeletal manifestations. It shares several features with Stickler syndrome, such as midfacial hypoplasia, high myopia, and sensorineural-hearing deficit.</p>
Sequence similarities	<p>Belongs to the fibrillar collagen family.</p> <p>Contains 1 fibrillar collagen NC1 domain.</p> <p>Contains 1 TSP N-terminal (TSPN) domain.</p>
Post-translational modifications	Prolines at the third position of the tripeptide repeating unit (G-X-Y) are hydroxylated in some or all of the chains.
Cellular localization	Secreted > extracellular space > extracellular matrix.

Images



Western blot - Anti-COL11A1 antibody (ab64883)

All lanes : Anti-COL11A1 antibody (ab64883) at 1/500 dilution

Lane 1 : extracts from K562 cells (5-30µg total protein)

Lane 2 : extracts from K562 cells (5-30µg total protein) and 5-10µg of the immunising peptide.

Predicted band size: 181 kDa

Observed band size: 181 kDa

Please note: All products are "FOR RESEARCH USE ONLY. NOT FOR USE IN DIAGNOSTIC PROCEDURES"

Our Abpromise to you: Quality guaranteed and expert technical support

- Replacement or refund for products not performing as stated on the datasheet
- Valid for 12 months from date of delivery
- Response to your inquiry within 24 hours
- We provide support in Chinese, English, French, German, Japanese and Spanish
- Extensive multi-media technical resources to help you
- We investigate all quality concerns to ensure our products perform to the highest standards

If the product does not perform as described on this datasheet, we will offer a refund or replacement. For full details of the Abpromise, please visit <https://www.abcam.com/abpromise> or contact our technical team.

Terms and conditions

- Guarantee only valid for products bought direct from Abcam or one of our authorized distributors