

Product datasheet

Anti-Complement factor B antibody [EPR9288(B)] ab133765

Recombinant RabMAb

[2 Images](#)

Overview

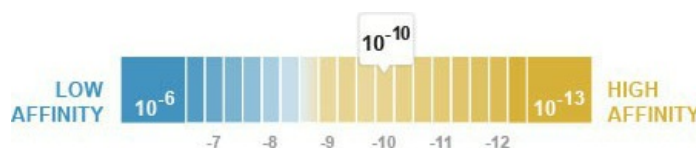
Product name	Anti-Complement factor B antibody [EPR9288(B)]
Description	Rabbit monoclonal [EPR9288(B)] to Complement factor B
Host species	Rabbit
Tested applications	Suitable for: WB Unsuitable for: IHC-P or IP
Species reactivity	Reacts with: Human
Immunogen	Synthetic peptide corresponding to a region within the C terminal end of Human Complement factor B (UniProt ID: P00751).
Positive control	Human serum and plasma
General notes	Mouse, Rat: We have preliminary internal testing data to indicate this antibody may not react with these species. Please contact us for more information.

Our RabMAb[®] technology is a patented hybridoma-based technology for making rabbit monoclonal antibodies. For details on our patents, please refer to [RabMAb[®] patents](#).

This product is a [recombinant rabbit monoclonal antibody](#).

Properties

Form	Liquid
Storage instructions	Shipped at 4°C. Upon delivery aliquot and store at -20°C. Avoid freeze / thaw cycles.
Dissociation constant (K_D)	K _D = 1.43 x 10 ⁻¹⁰ M



[Learn more about K_D](#)

Storage buffer	pH: 7.20 Preservative: 0.01% Sodium azide
-----------------------	--

Constituents: 9% PBS, 40% Glycerol, 0.05% BSA, 50% Tissue culture supernatant

Purity	Tissue culture supernatant
Clonality	Monoclonal
Clone number	EPR9288(B)
Isotype	IgG

Applications

Our [Abpromise guarantee](#) covers the use of **ab133765** in the following tested applications.

The application notes include recommended starting dilutions; optimal dilutions/concentrations should be determined by the end user.

Application	Abreviews	Notes
WB		1/1000 - 1/10000. Detects a band of approximately 95, 60 kDa (predicted molecular weight: 86 kDa).

Application notes Is unsuitable for IHC-P or IP.

Target

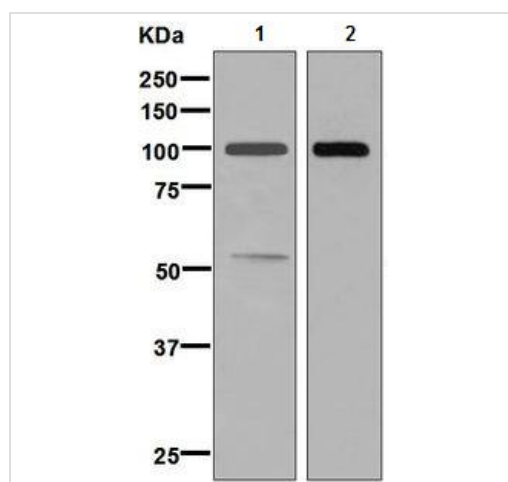
Relevance

Factor B which is part of the alternate pathway of the complement system is cleaved by factor D into 2 fragments: Ba and Bb. Bb, a serine protease, then combines with complement factor 3b to generate the C3 or C5 convertase. It has also been implicated in proliferation and differentiation of preactivated B-lymphocytes, rapid spreading of peripheral blood monocytes, stimulation of lymphocyte blastogenesis and lysis of erythrocytes. Ba inhibits the proliferation of preactivated B-lymphocytes.

Cellular localization

Plasma membrane and Secreted

Images



Western blot - Anti-Complement factor B antibody [EPR9288(B)] (ab133765)

All lanes : Anti-Complement factor B antibody [EPR9288(B)] (ab133765) at 1/1000 dilution

Lane 1 : Human serum

Lane 2 : Human plasma

Lysates/proteins at 10 µg per lane.

Secondary

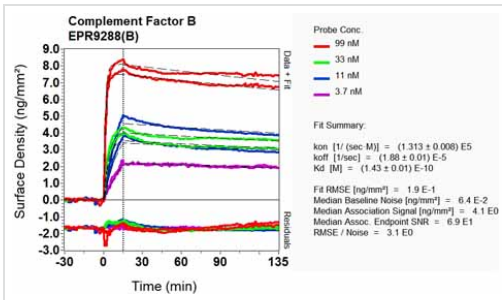
All lanes : Goat anti-rabbit HRP conjugated antibody at 1/2000 dilution

Predicted band size: 86 kDa

Observed band size: 95 kDa

[why is the actual band size different from the predicted?](#)

Additional bands at: 60 kDa (possible isoform)



Equilibrium disassociation constant (K_D)

Learn more about K_D

[Click here to learn more about \$K_D\$](#)

Other - Anti-Complement factor B antibody
[EPR9288(B)] (ab133765)

Please note: All products are "FOR RESEARCH USE ONLY. NOT FOR USE IN DIAGNOSTIC PROCEDURES"

Our Abpromise to you: Quality guaranteed and expert technical support

- Replacement or refund for products not performing as stated on the datasheet
- Valid for 12 months from date of delivery
- Response to your inquiry within 24 hours
- We provide support in Chinese, English, French, German, Japanese and Spanish
- Extensive multi-media technical resources to help you
- We investigate all quality concerns to ensure our products perform to the highest standards

If the product does not perform as described on this datasheet, we will offer a refund or replacement. For full details of the Abpromise, please visit <https://www.abcam.com/abpromise> or contact our technical team.

Terms and conditions

- Guarantee only valid for products bought direct from Abcam or one of our authorized distributors