

Product datasheet

Anti-Complex I subunit 8 kDa antibody [17C8E4E11]  
ab110245

11 References 1 Image

Overview

<b>Product name</b>	Anti-Complex I subunit 8 kDa antibody [17C8E4E11]
<b>Description</b>	Mouse monoclonal [17C8E4E11] to Complex I subunit 8 kDa
<b>Host species</b>	Mouse
<b>Tested applications</b>	<b>Suitable for:</b> WB
<b>Species reactivity</b>	<b>Reacts with:</b> Mouse, Rat, Cow, Human
<b>Immunogen</b>	Full length native protein (purified). This information is considered to be commercially sensitive.
<b>Positive control</b>	Isolated mitochondria from Human, Bovine, Rat and Mouse hearts.
<b>General notes</b>	<p>This antibody clone is manufactured by Abcam. If you require a custom buffer formulation or conjugation for your experiments, please contact <a href="mailto:orders@abcam.com">orders@abcam.com</a>.</p> <p>The Life Science industry has been in the grips of a reproducibility crisis for a number of years. Abcam is leading the way in addressing this with our range of recombinant monoclonal antibodies and knockout edited cell lines for gold-standard validation. Please check that this product meets your needs before purchasing.</p> <p>If you have any questions, special requirements or concerns, please send us an inquiry and/or contact our Support team ahead of purchase. Recommended alternatives for this product can be found below, along with publications, customer reviews and Q&amp;As</p> <p>Product was previously marketed under the MitoSciences sub-brand.</p>

Properties

<b>Form</b>	Liquid
<b>Storage instructions</b>	Shipped at 4°C. Store at +4°C. Do Not Freeze.
<b>Storage buffer</b>	<p>pH: 7.5</p> <p>Preservative: 0.02% Sodium azide</p> <p>Constituent: HEPES buffered saline</p>
<b>Purification notes</b>	ab110245 was produced in vitro using hybridomas grown in serum-free medium, and then purified by biochemical fractionation.
<b>Clonality</b>	Monoclonal

Clone number	17C8E4E11
Isotype	IgG1
Light chain type	kappa

## Applications

**The Abpromise guarantee** Our [Abpromise guarantee](#) covers the use of ab110245 in the following tested applications. The application notes include recommended starting dilutions; optimal dilutions/concentrations should be determined by the end user.

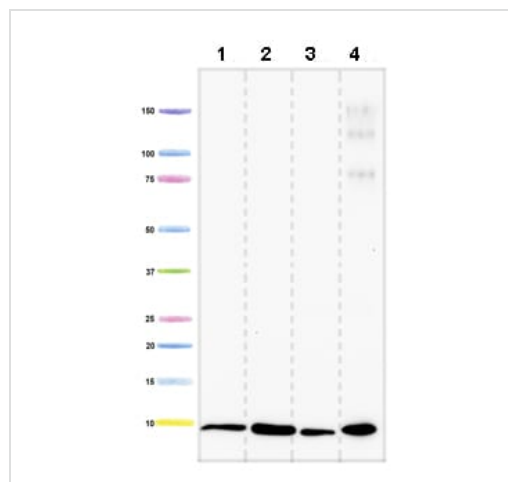
Application	Abreviews	Notes
WB		Use a concentration of 1 µg/ml.

## Target

**Relevance** Core subunit of the mitochondrial membrane respiratory chain NADH dehydrogenase (Complex I) that is believed to belong to the minimal assembly required for catalysis. Complex I functions in the transfer of electrons from NADH to the respiratory chain. The immediate electron acceptor for the enzyme is believed to be ubiquinone.

**Cellular localization** Mitochondrial

## Images



Western blot - Anti-Complex I subunit 8 kDa antibody [17C8E4E11] (ab110245)

**All lanes :** Anti-Complex I subunit 8 kDa antibody [17C8E4E11] (ab110245) at 1 µg/ml

**Lane 1 :** Human heart mitochondria at 10 µg

**Lane 2 :** Bovine heart mitochondria at 4 µg

**Lane 3 :** Rat heart mitochondria at 10 µg

**Lane 4 :** Mouse heart mitochondria at 10 µg

**Please note:** All products are "FOR RESEARCH USE ONLY. NOT FOR USE IN DIAGNOSTIC PROCEDURES"

## Our Abpromise to you: Quality guaranteed and expert technical support

- Replacement or refund for products not performing as stated on the datasheet

- Valid for 12 months from date of delivery
- Response to your inquiry within 24 hours
  
- We provide support in Chinese, English, French, German, Japanese and Spanish
- Extensive multi-media technical resources to help you
- We investigate all quality concerns to ensure our products perform to the highest standards

If the product does not perform as described on this datasheet, we will offer a refund or replacement. For full details of the Abpromise, please visit <https://www.abcam.com/abpromise> or contact our technical team.

### **Terms and conditions**

---

- Guarantee only valid for products bought direct from Abcam or one of our authorized distributors