


Product datasheet

Anti-COMT antibody ab129504

★★★★★ 1 Abreviews 3 Images

Overview

Product name	Anti-COMT antibody
Description	Rabbit polyclonal to COMT
Host species	Rabbit
Tested applications	Suitable for: IHC-P, WB, IP
Species reactivity	Reacts with: Human Predicted to work with: Chimpanzee, Gorilla, Orangutan 
Immunogen	Synthetic peptide, corresponding to a region within amino acids 221-271 of Human COMT (NP_000745.1).
Positive control	Whole cell lysate from HeLa, 293T and Jurkat cells.
General notes	<p>Reproducibility is key to advancing scientific discovery and accelerating scientists' next breakthrough.</p> <p>Abcam is leading the way with our range of recombinant antibodies, knockout-validated antibodies and knockout cell lines, all of which support improved reproducibility.</p> <p>We are also planning to innovate the way in which we present recommended applications and species on our product datasheets, so that only applications & species that have been tested in our own labs, our suppliers or by selected trusted collaborators are covered by our Abpromise™ guarantee.</p> <p>In preparation for this, we have started to update the applications & species that this product is Abpromise guaranteed for.</p> <p>We are also updating the applications & species that this product has been “predicted to work with,” however this information is not covered by our Abpromise guarantee.</p> <p>Applications & species from publications and Abreviews that have not been tested in our own labs or in those of our suppliers are not covered by the Abpromise guarantee.</p> <p>Please check that this product meets your needs before purchasing. If you have any questions, special requirements or concerns, please send us an inquiry and/or contact our Support team ahead of purchase. Recommended alternatives for this product can be found below, as well as customer reviews and Q&As.</p>

Properties

Form	Liquid
-------------	--------

Storage instructions	Shipped at 4°C. Store at +4°C.
Storage buffer	pH: 7 Preservative: 0.09% Sodium azide Constituent: 99% Tris citrate/phosphate
	pH 7 to 8.
Purity	Immunogen affinity purified
Clonality	Polyclonal
Isotype	IgG

Applications

Our [Abpromise guarantee](#) covers the use of **ab129504** in the following tested applications.

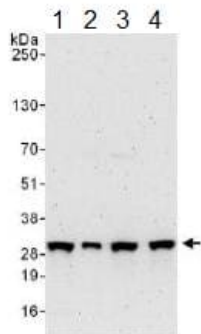
The application notes include recommended starting dilutions; optimal dilutions/concentrations should be determined by the end user.

Application	Abreviews	Notes
IHC-P	★★★★★	1/500 - 1/2000. Perform heat mediated antigen retrieval with citrate buffer pH 6 before commencing with IHC staining protocol.
WB		1/2000 - 1/10000. Predicted molecular weight: 30 kDa.
IP		Use at 2-10 µg/mg of lysate.

Target

Function	Catalyzes the O-methylation, and thereby the inactivation, of catecholamine neurotransmitters and catechol hormones. Also shortens the biological half-lives of certain neuroactive drugs, like L-DOPA, alpha-methyl DOPA and isoproterenol.
Tissue specificity	Brain, liver, placenta, lymphocytes and erythrocytes.
Sequence similarities	Belongs to the mammalian catechol-O-methyltransferase family.
Post-translational modifications	The N-terminus is blocked.
Cellular localization	Cytoplasm and Cell membrane.

Images



Western blot - Anti-COMT antibody (ab129504)

All lanes : Anti-COMT antibody (ab129504) at 0.1 $\mu\text{g/ml}$

Lane 1 : Whole cell lysate from HeLa cells at 50 μg

Lane 2 : Whole cell lysate from HeLa cells at 15 μg

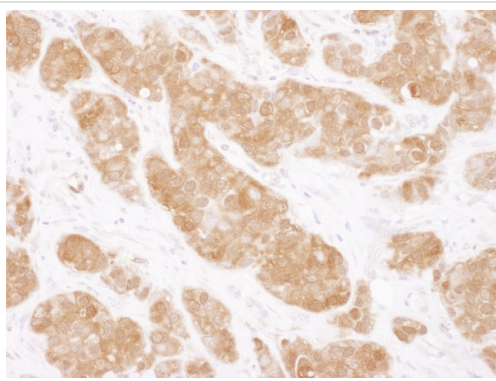
Lane 3 : Whole cell lysate from 293T cells at 50 μg

Lane 4 : Whole cell lysate from Jurkat cells at 50 μg

Developed using the ECL technique.

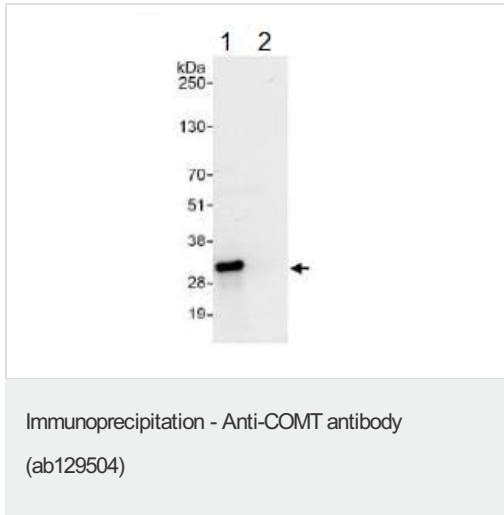
Predicted band size: 30 kDa

Exposure time: 3 minutes



Immunohistochemistry (Formalin/PFA-fixed paraffin-embedded sections) - Anti-COMT antibody (ab129504)

Immunohistochemistry (Formalin/PFA-fixed paraffin-embedded sections) analysis of human breast carcinoma tissue labelling COMT with ab129504 at 1/1000 (1 $\mu\text{g/ml}$). Detection: DAB.



ab129504 at 1 µg/ml staining COMT by WB, following immunoprecipitation of whole cell lysate from HeLa cells.
Lane 1; IP using ab129504 at 6 µg/mg lysate.
Lane 2; IP using control IgG.
1 mg of lysate was used for IP and 20% of IP was loaded. Detection utilised Chemiluminescence with a 10 second exposure.

Please note: All products are "FOR RESEARCH USE ONLY. NOT FOR USE IN DIAGNOSTIC PROCEDURES"

Our Abpromise to you: Quality guaranteed and expert technical support

- Replacement or refund for products not performing as stated on the datasheet
- Valid for 12 months from date of delivery
- Response to your inquiry within 24 hours
- We provide support in Chinese, English, French, German, Japanese and Spanish
- Extensive multi-media technical resources to help you
- We investigate all quality concerns to ensure our products perform to the highest standards

If the product does not perform as described on this datasheet, we will offer a refund or replacement. For full details of the Abpromise, please visit <https://www.abcam.com/abpromise> or contact our technical team.

Terms and conditions

- Guarantee only valid for products bought direct from Abcam or one of our authorized distributors