

Product datasheet

Anti-Connexin 32 / GJB1 antibody [EPR8036(2)] - BSA and Azide free ab250497

Recombinant **RabMAb**

[4 Images](#)

Overview

Product name	Anti-Connexin 32 / GJB1 antibody [EPR8036(2)] - BSA and Azide free
Description	Rabbit monoclonal [EPR8036(2)] to Connexin 32 / GJB1 - BSA and Azide free
Host species	Rabbit
Tested applications	Suitable for: IHC-P, WB, Flow Cyt Unsuitable for: ICC/IF or IP
Species reactivity	Reacts with: Human
Immunogen	Synthetic peptide within Human Connexin 32/ GJB1 aa 50-150. The exact sequence is proprietary. Database link: P08034
General notes	<p>ab250497 is the carrier-free version of ab181374 This format is designed for use in antibody labeling, including fluorochromes, metal isotopes, oligonucleotides, enzymes.</p> <p>Our carrier-free formats are supplied in a buffer free of BSA, sodium azide and glycerol for higher conjugation efficiency.</p> <p>Use our conjugation kits for antibody conjugates that are ready-to-use in as little as 20 minutes with <1 minute hands-on-time and 100% antibody recovery: available for fluorescent dyes, HRP, biotin and gold.</p> <p>Ab250497 is compatible with the Maxpar® Antibody Labeling Kit from Fluidigm. <i>Maxpar® is a trademark of Fluidigm Canada Inc.</i></p> <p>Mouse, Rat: We have preliminary internal testing data to indicate this antibody may not react with these species. Please contact us for more information.</p> <p>This product is a recombinant monoclonal antibody, which offers several advantages including:</p> <ul style="list-style-type: none"> - High batch-to-batch consistency and reproducibility - Improved sensitivity and specificity - Long-term security of supply - Animal-free production <p>For more information see here.</p> <p>Our RabMAb® technology is a patented hybridoma-based technology for making rabbit monoclonal antibodies. For details on our patents, please refer to RabMAb® patents.</p>

Reproducibility is key to advancing scientific discovery and accelerating scientists' next breakthrough.

Abcam is leading the way with our range of recombinant antibodies, knockout-validated antibodies and knockout cell lines, all of which support improved reproducibility.

We are also planning to innovate the way in which we present recommended applications and species on our product datasheets, so that only applications & species that have been tested in our own labs, our suppliers or by selected trusted collaborators are covered by our Abpromise™ guarantee.

In preparation for this, we have started to update the applications & species that this product is Abpromise guaranteed for.

We are also updating the applications & species that this product has been “predicted to work with,” however this information is not covered by our Abpromise guarantee.

Applications & species from publications and Abreviews that have not been tested in our own labs or in those of our suppliers are not covered by the Abpromise guarantee.

Please check that this product meets your needs before purchasing. If you have any questions, special requirements or concerns, please send us an inquiry and/or contact our Support team ahead of purchase. Recommended alternatives for this product can be found below, as well as customer reviews and Q&As.

Properties

Form	Liquid
Storage instructions	Shipped at 4°C. Store at +4°C. Do Not Freeze.
Storage buffer	pH: 7.2 Constituent: PBS
Carrier free	Yes
Purity	Affinity purified
Clonality	Monoclonal
Clone number	EPR8036(2)
Isotype	IgG

Applications

Our [Abpromise guarantee](#) covers the use of **ab250497** in the following tested applications.

The application notes include recommended starting dilutions; optimal dilutions/concentrations should be determined by the end user.

Application	Abreviews	Notes
IHC-P		Use at an assay dependent concentration. Perform heat mediated antigen retrieval with citrate buffer pH 6 before commencing with IHC staining protocol.
WB		Use at an assay dependent concentration. Predicted molecular weight: 32 kDa.
Flow Cyt		Use at an assay dependent concentration.

Application notes

Is unsuitable for ICC/IF or IP.

Target

Function

One gap junction consists of a cluster of closely packed pairs of transmembrane channels, the connexons, through which materials of low MW diffuse from one cell to a neighboring cell.

Involvement in disease

Defects in GJB1 are the cause of Charcot-Marie-Tooth disease X-linked type 1 (CMTX1) [MIM:302800]; also designated CMT-X. CMTX1 is a form of Charcot-Marie-Tooth disease, the most common inherited disorder of the peripheral nervous system. Charcot-Marie-Tooth disease is classified in two main groups on the basis of electrophysiologic properties and histopathology: primary peripheral demyelinating neuropathies characterized by severely reduced motor nerve conduction velocities (NCVs) (less than 38m/s) and segmental demyelination and remyelination, and primary peripheral axonal neuropathies characterized by normal or mildly reduced NCVs and chronic axonal degeneration and regeneration on nerve biopsy. CMTX1 has both demyelinating and axonal features. Central nervous system involvement may occur.

Defects in GJB1 may contribute to the phenotype of Dejerine-Sottas syndrome (DSS) [MIM:145900]; also known as Dejerine-Sottas neuropathy (DSN) or hereditary motor and sensory neuropathy III (HMSN3). DSS is a severe degenerating neuropathy of the demyelinating Charcot-Marie-Tooth disease category, with onset by age 2 years. DSS is characterized by motor and sensory neuropathy with very slow nerve conduction velocities, increased cerebrospinal fluid protein concentrations, hypertrophic nerve changes, delayed age of walking as well as areflexia. There are both autosomal dominant and autosomal recessive forms of Dejerine-Sottas syndrome.

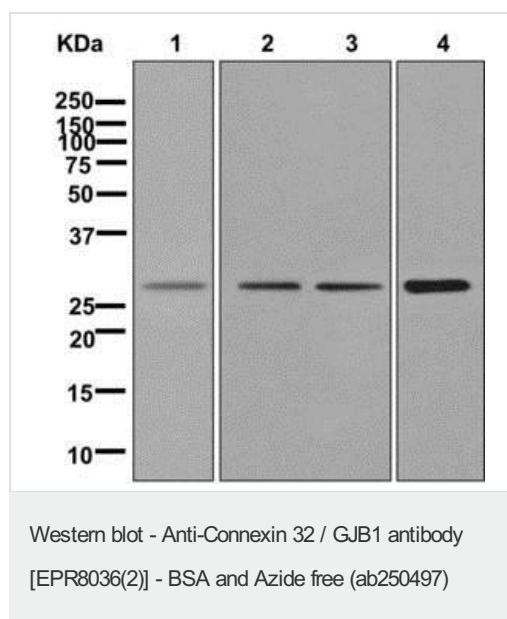
Sequence similarities

Belongs to the connexin family. Beta-type (group I) subfamily.

Cellular localization

Cell membrane. Cell junction > gap junction.

Images



All lanes : Anti-Connexin 32 / GJB1 antibody [EPR8036(2)] (ab181374) at 1/1000 dilution

Lane 1 : Human skeletal muscle lysate

Lane 2 : Fetal liver tissue lysate

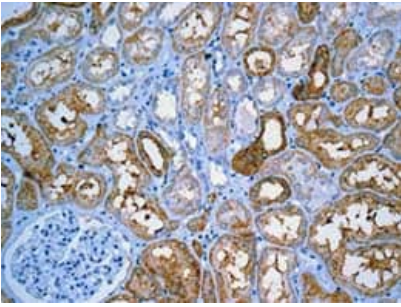
Lane 3 : MCF-7 lysate

Lane 4 : Human stomach lysate

Lysates/proteins at 10 µg per lane.

Predicted band size: 32 kDa

This data was developed using ab181374, the same antibody clone in a different buffer formulation.

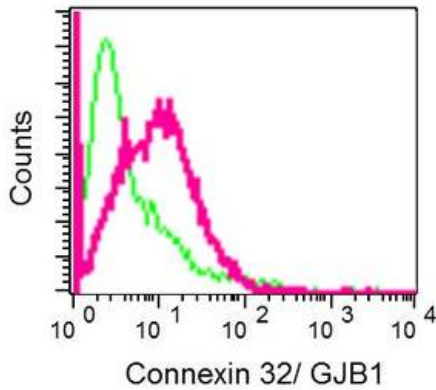


Immunohistochemistry (Formalin/PFA-fixed paraffin-embedded sections) - Anti-Connexin 32 / GJB1 antibody [EPR8036(2)] - BSA and Azide free (ab250497)

This data was developed using [ab181374](#), the same antibody clone in a different buffer formulation.

Immunohistochemical analysis of paraffin-embedded Human kidney tissue labeling Connexin 32 / GJB1 with [ab181374](#) at 1/100 dilution.

Perform heat mediated antigen retrieval with citrate buffer pH 6 before commencing with IHC staining protocol.



Flow Cytometry - Anti-Connexin 32 / GJB1 antibody [EPR8036(2)] - BSA and Azide free (ab250497)

This data was developed using [ab181374](#), the same antibody clone in a different buffer formulation.

Flow cytometric analysis of MCF-7 cells labeling Connexin 32 / GJB1 with [ab181374](#) at 1/10 dilution (red) compared to a rabbit IgG negative control (green).

Why choose a recombinant antibody?

- Research with confidence**
Consistent and reproducible results
- Long-term and scalable supply**
Recombinant technology
- Success from the first experiment**
Confirmed specificity
- Ethical standards compliant**
Animal-free production

Anti-Connexin 32 / GJB1 antibody [EPR8036(2)] - BSA and Azide free (ab250497)

Our Abpromise to you: Quality guaranteed and expert technical support

- Replacement or refund for products not performing as stated on the datasheet
- Valid for 12 months from date of delivery
- Response to your inquiry within 24 hours

- We provide support in Chinese, English, French, German, Japanese and Spanish
- Extensive multi-media technical resources to help you
- We investigate all quality concerns to ensure our products perform to the highest standards

If the product does not perform as described on this datasheet, we will offer a refund or replacement. For full details of the Abpromise, please visit <https://www.abcam.com/abpromise> or contact our technical team.

Terms and conditions

- Guarantee only valid for products bought direct from Abcam or one of our authorized distributors