




Product datasheet

Anti-COPE antibody ab235061

2 Images

Overview

Product name	Anti-COPE antibody
Description	Rabbit polyclonal to COPE
Host species	Rabbit
Tested applications	Suitable for: IHC-P, WB
Species reactivity	Reacts with: Human Predicted to work with: Mouse, Cow, Chinese hamster, Orangutan 
Immunogen	Recombinant full length protein corresponding to Human COPE aa 2-308. Sequence: APPAPGPASGGSGEVDLFDVKNAFYIGSYQQCINEA QRVKLSSPERDVE RDVFLYRAYLAQRKFGVVLDEIKPSSAPELQAVRMFA DYLAHESRRDSIV AELDREMSRSVDVTNTTFLMAASYLHDQNPDAALRA LHQGDSLECTAM TVQILLKLDRLDLARKELKRMQDLDEDATLTQLATAWW SLATGGEKLQDA YYIFQEMADKCSPTLLLLNGQAACHMAQGRWEAAEGL LQEALDKDSGYPE TLVNLMLSQHLGKPPEVTNRYLSQLKDAHRSHPIKEY QAKENDFDRLV LQYAPSA Database link: O14579  Run BLAST with  Run BLAST with
Positive control	WB: PC-3, HEK-293, HepG2, MCF-7, HeLa and A-375 whole cell lysates. IHC-P: Human prostate cancer tissue.

Properties

Form	Liquid
Storage instructions	Shipped at 4°C. Store at +4°C short term (1-2 weeks). Upon delivery aliquot. Store at -20°C long term. Avoid freeze / thaw cycle.
Storage buffer	pH: 7.4

	Preservative: 0.03% Proclin Constituents: PBS, 50% Glycerol
Purity	Protein G purified
Purification notes	Purity >95%
Clonality	Polyclonal
Isotype	IgG

Applications

Our [Abpromise guarantee](#) covers the use of **ab235061** in the following tested applications.

The application notes include recommended starting dilutions; optimal dilutions/concentrations should be determined by the end user.

Application	Abreviews	Notes
IHC-P		1/20 - 1/200.
WB		1/500 - 1/5000. Predicted molecular weight: 34 kDa.

Target

Function

The coatomer is a cytosolic protein complex that binds to dilysine motifs and reversibly associates with Golgi non-clathrin-coated vesicles, which further mediate biosynthetic protein transport from the ER, via the Golgi up to the trans Golgi network. Coatomer complex is required for budding from Golgi membranes, and is essential for the retrograde Golgi-to-ER transport of dilysine-tagged proteins. In mammals, the coatomer can only be recruited by membranes associated to ADP-ribosylation factors (ARFs), which are small GTP-binding proteins; the complex also influences the Golgi structural integrity, as well as the processing, activity, and endocytic recycling of LDL receptors.

Sequence similarities

Belongs to the COPE family.

Post-translational modifications

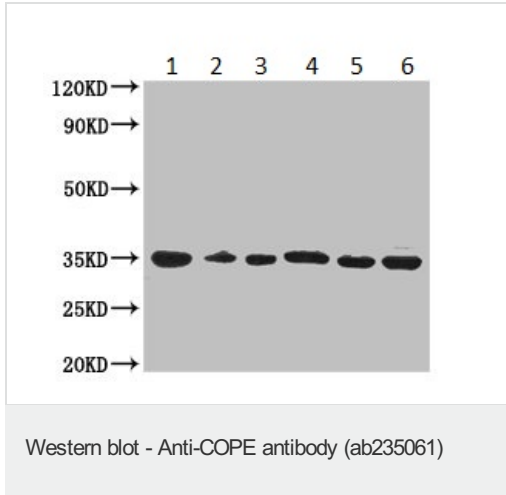
Phosphorylated by PKA.

Polyubiquitinated by RCHY1 in the presence of androgen, leading to proteasomal degradation.

Cellular localization

Cytoplasm. Golgi apparatus membrane. Cytoplasmic vesicle > COPI-coated vesicle membrane. The coatomer is cytoplasmic or polymerized on the cytoplasmic side of the Golgi, as well as on the vesicles/buds originating from it.

Images



All lanes : Anti-COPE antibody (ab235061) at 1/500 dilution

Lane 1 : PC-3 (human prostate adenocarcinoma cell line) whole cell lysate

Lane 2 : HEK-293 (human epithelial cell line from embryonic kidney) whole cell lysate

Lane 3 : HepG2 (human liver hepatocellular carcinoma cell line) whole cell lysate

Lane 4 : MCF7 (human breast adenocarcinoma cell line) whole cell lysate

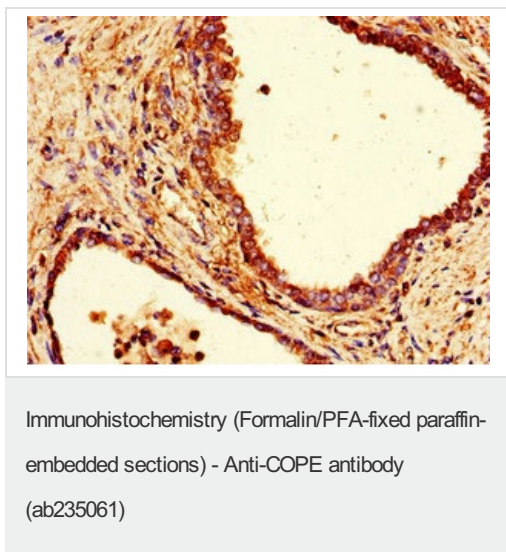
Lane 5 : HeLa (human epithelial cell line from cervix adenocarcinoma) whole cell lysate

Lane 6 : A-375 (human malignant melanoma cell line) whole cell lysate

Secondary

All lanes : Polyclonal Goat anti-rabbit IgG at 1/50000 dilution

Predicted band size: 34 kDa



Paraffin-embedded prostate cancer tissue stained for COPE using ab235061 at 1/100 dilution in immunohistochemical analysis.

Please note: All products are "FOR RESEARCH USE ONLY. NOT FOR USE IN DIAGNOSTIC PROCEDURES"

Our Abpromise to you: Quality guaranteed and expert technical support

- Replacement or refund for products not performing as stated on the datasheet
- Valid for 12 months from date of delivery
- Response to your inquiry within 24 hours

- We provide support in Chinese, English, French, German, Japanese and Spanish
- Extensive multi-media technical resources to help you
- We investigate all quality concerns to ensure our products perform to the highest standards

If the product does not perform as described on this datasheet, we will offer a refund or replacement. For full details of the Abpromise, please visit <https://www.abcam.com/abpromise> or contact our technical team.

Terms and conditions

- Guarantee only valid for products bought direct from Abcam or one of our authorized distributors