


Product datasheet

Anti-Coronin 1a/TACO antibody - C-terminal ab228635

8 Images

Overview

Product name	Anti-Coronin 1a/TACO antibody - C-terminal
Description	Rabbit polyclonal to Coronin 1a/TACO - C-terminal
Host species	Rabbit
Tested applications	Suitable for: WB, IHC-P, IHC-Fr, ICC/IF
Species reactivity	Reacts with: Mouse, Rat, Human Predicted to work with: Cow 
Immunogen	Synthetic peptide within Human Coronin 1a/TACO (C terminal). The exact sequence is proprietary. Conjugated to a carrier protein. Database link: P31146
Positive control	WB: U87-MG, SK-N-SH, IMR32 and SK-N-AS whole cell extracts. ICC/IF: HepG2 cells. IHC-P: Human gastric cancer; mouse and rat brain tissue. Mouse duodenum and rat intestine tissue. IHC-Fr: Mouse cerebellum tissue.
General notes	This product was previously labelled as Coronin 1a

Properties

Form	Liquid
Storage instructions	Shipped at 4°C. Store at +4°C short term (1-2 weeks). Upon delivery aliquot. Store at -20°C long term. Avoid freeze / thaw cycle.
Storage buffer	pH: 7.00 Preservative: 0.01% Thimerosal (merthiolate) Constituents: 1.21% Tris, 0.75% Glycine, 20% Glycerol
Purity	Immunogen affinity purified
Clonality	Polyclonal
Isotype	IgG

Applications

Our [Abpromise guarantee](#) covers the use of **ab228635** in the following tested applications.

The application notes include recommended starting dilutions; optimal dilutions/concentrations should be determined by the end user.

Application	Abreviews	Notes
WB		1/500 - 1/3000. Predicted molecular weight: 51 kDa.
IHC-P		1/100 - 1/1000.
IHC-Fr		1/100 - 1/1000.
ICC/IF		1/100 - 1/1000.

Target

Function

May be a crucial component of the cytoskeleton of highly motile cells, functioning both in the invagination of large pieces of plasma membrane, as well as in forming protrusions of the plasma membrane involved in cell locomotion. In mycobacteria-infected cells, its retention on the phagosomal membrane prevents fusion between phagosomes and lysosomes.

Tissue specificity

Expressed in brain, thymus, spleen, bone marrow and lymph node. Low in lung and gut.

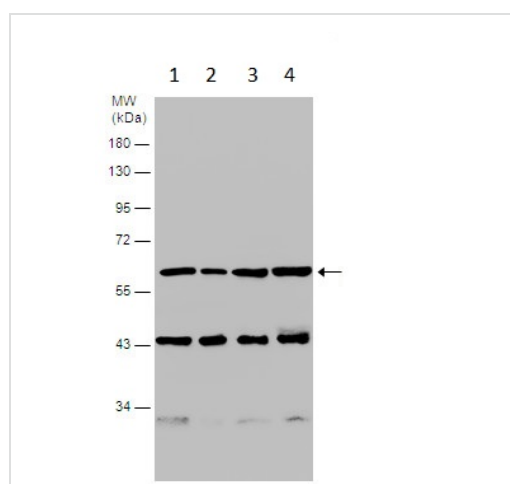
Sequence similarities

Belongs to the WD repeat coronin family.
Contains 7 WD repeats.

Cellular localization

Cytoplasm > cytoskeleton. Cytoplasm > cell cortex. Cytoplasmic vesicle > phagosome membrane. In non-infected macrophages, associated with the cortical microtubule network. In mycobacteria-infected macrophages, becomes progressively relocalized and retained around the mycobacterial phagosomes. Retention on the phagosomal membrane is strictly dependent on mycobacterial viability and not due to impaired acidification.

Images



Western blot - Anti-Coronin 1a/TACO antibody - C-terminal (ab228635)

All lanes : Anti-Coronin 1a/TACO antibody - C-terminal (ab228635) at 1/1000 dilution

Lane 1 : U87-MG (Human glioblastoma-astrocytoma epithelial cell line) whole cell extract

Lane 2 : SK-N-SH (Human neuroblastoma cell line) whole cell extract

Lane 3 : IMR32 (human neuroblast cell line) whole cell extract

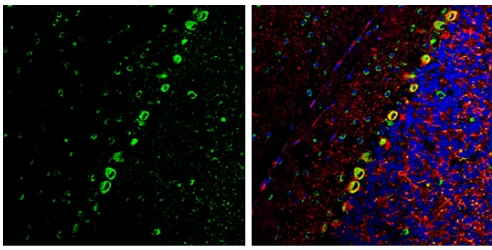
Lane 4 : SK-N-AS (Human brain neuroblastoma cell line) whole cell extracts

Lysates/proteins at 30 µg per lane.

Developed using the ECL technique.

Predicted band size: 51 kDa

10% SDS-PAGE gel.

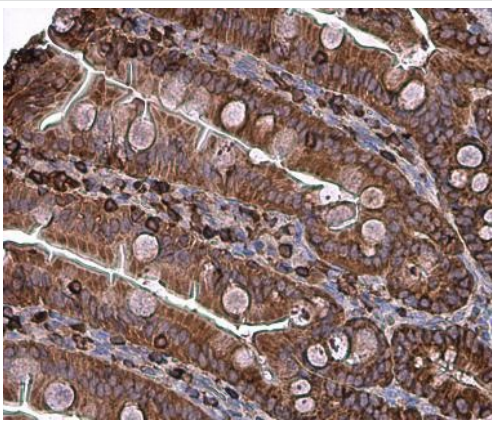


Frozen-sectioned adult mouse cerebellum stained for Coronin 1A/TACO Protein (green) using ab228635 at 1/500 in immunohistochemical analysis.

NF-H (Neurofilament Heavy) cells stained for NF-H (red) using NF-H antibody at 1/500 dilution.

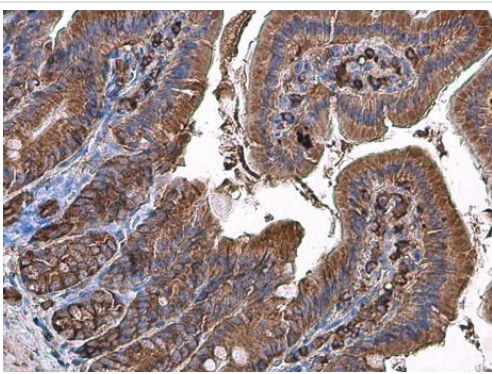
Counterstain: Fluoroshield with DAPI (blue).

Immunohistochemistry (Frozen sections) - Anti-Coronin 1a/TACO antibody - C-terminal (ab228635)



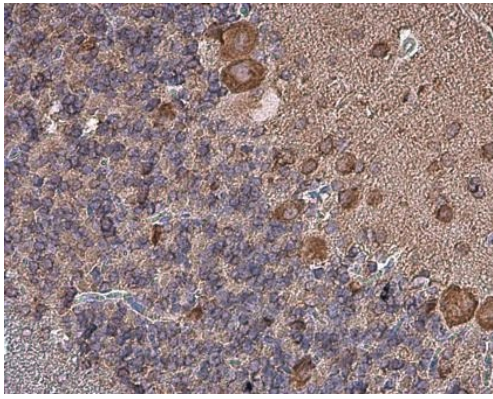
Paraffin-embedded rat intestine tissue stained for Coronin 1A/TACO protein using ab228635 at 1/500 dilution in immunohistochemical analysis.

Immunohistochemistry (Formalin/PFA-fixed paraffin-embedded sections) - Anti-Coronin 1a/TACO antibody - C-terminal (ab228635)



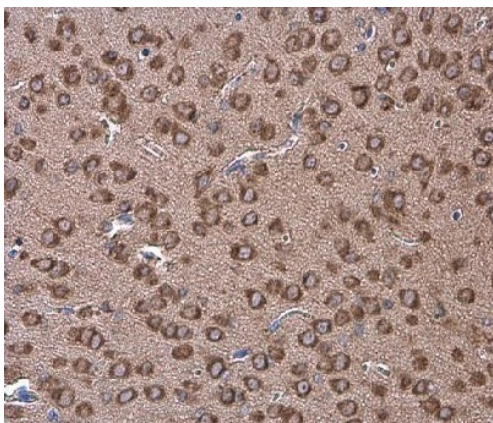
Paraffin-embedded mouse duodenum tissue stained for Coronin 1A/TACO using ab228635 at 1/500 dilution in immunohistochemical analysis.

Immunohistochemistry (Formalin/PFA-fixed paraffin-embedded sections) - Anti-Coronin 1a/TACO antibody - C-terminal (ab228635)



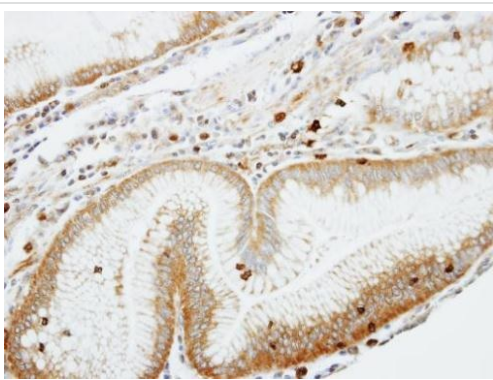
Immunohistochemistry (Formalin/PFA-fixed paraffin-embedded sections) - Anti-Coronin 1a/TACO antibody - C-terminal (ab228635)

Paraffin-embedded rat brain tissue stained for Coronin 1A/TACO using ab228635 at 1/500 dilution in immunohistochemical analysis.



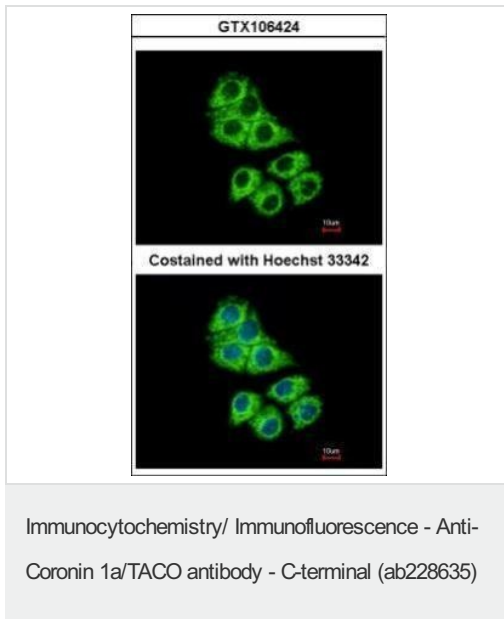
Immunohistochemistry (Formalin/PFA-fixed paraffin-embedded sections) - Anti-Coronin 1a/TACO antibody - C-terminal (ab228635)

Paraffin-embedded mouse brain tissue stained for Coronin 1A/TACO using ab228635 at 1/500 dilution in immunohistochemical analysis.



Immunohistochemistry (Formalin/PFA-fixed paraffin-embedded sections) - Anti-Coronin 1a/TACO antibody - C-terminal (ab228635)

Paraffin-embedded human gastric cancer tissue stained for Coronin 1A/TACO using ab228635 at 1/100 dilution in immunohistochemical analysis.



Methanol-fixed HepG2 (Human liver hepatocellular carcinoma cell line) cells stained for Coronin 1A/TACO (green) using ab228635 at 1/500 dilution in ICC/IF.

Nuclear counterstain: Hoechst 33342 (blue).

Please note: All products are "FOR RESEARCH USE ONLY. NOT FOR USE IN DIAGNOSTIC PROCEDURES"

Our Abpromise to you: Quality guaranteed and expert technical support

- Replacement or refund for products not performing as stated on the datasheet
- Valid for 12 months from date of delivery
- Response to your inquiry within 24 hours
- We provide support in Chinese, English, French, German, Japanese and Spanish
- Extensive multi-media technical resources to help you
- We investigate all quality concerns to ensure our products perform to the highest standards

If the product does not perform as described on this datasheet, we will offer a refund or replacement. For full details of the Abpromise, please visit <https://www.abcam.com/abpromise> or contact our technical team.

Terms and conditions

- Guarantee only valid for products bought direct from Abcam or one of our authorized distributors