

Product datasheet

Anti-Coronin-7 antibody ab117446

3 Images

Overview

<b>Product name</b>	Anti-Coronin-7 antibody
<b>Description</b>	Rabbit polyclonal to Coronin-7
<b>Host species</b>	Rabbit
<b>Tested applications</b>	<b>Suitable for:</b> ICC, ICC/IF, WB, IHC-P
<b>Species reactivity</b>	<b>Reacts with:</b> Mouse, Rat, Human
<b>Immunogen</b>	Synthetic peptide corresponding to Human Coronin-7 (C terminal). Database link: <a href="#">NP_078811</a>
<b>Positive control</b>	Rat lung tissue lysate
<b>General notes</b>	Previously labelled as CORO7.

Properties

<b>Form</b>	Liquid
<b>Storage instructions</b>	Shipped at 4°C. Store at +4°C short term (1-2 weeks). Store at -20°C or -80°C. Avoid freeze / thaw cycle.
<b>Storage buffer</b>	Preservative: 0.02% Sodium azide Constituent: 99% PBS
<b>Purity</b>	Immunogen affinity purified
<b>Clonality</b>	Polyclonal
<b>Isotype</b>	IgG

Applications

Our [Abpromise guarantee](#) covers the use of **ab117446** in the following tested applications.

The application notes include recommended starting dilutions; optimal dilutions/concentrations should be determined by the end user.

Application	Abreviews	Notes
ICC		Use a concentration of 2.5 µg/ml.
ICC/IF		Use a concentration of 20 µg/ml.

Application	Abreviews	Notes
-------------	-----------	-------

WB Use a concentration of 1 - 2 µg/ml. Predicted molecular weight: 101 kDa.

IHC-P Use at an assay dependent concentration.

## Target

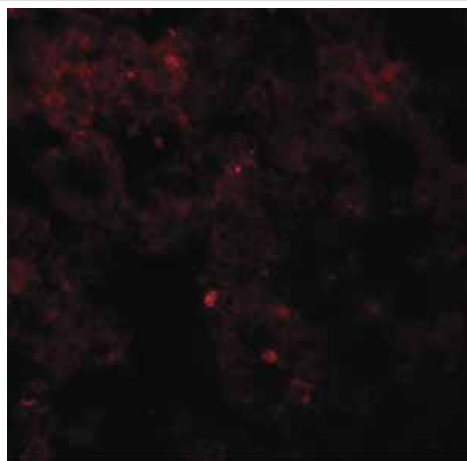
**Function** May play a role in the maintenance of the Golgi apparatus morphology and in the protein export from the Golgi.

**Sequence similarities** Belongs to the WD repeat coronin family.  
Contains 8 WD repeats.

**Post-translational modifications** The membrane-associated form is phosphorylated on tyrosine residues.

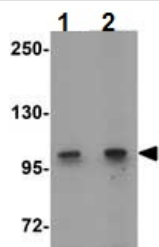
**Cellular localization** Cytoplasm > cytosol. Golgi apparatus membrane. Cytoplasmic vesicle. Predominantly cytosolic. Detected on vesicle-like cytoplasmic structures and on the cis-Golgi. Not associated with actin filaments.

## Images



Immunofluorescence of Coronin-7 in rat lung tissue with ab117446 at 20 µg/mL.

Immunocytochemistry/ Immunofluorescence - Anti-Coronin-7 antibody (ab117446)



Western blot - Anti-Coronin-7 antibody (ab117446)

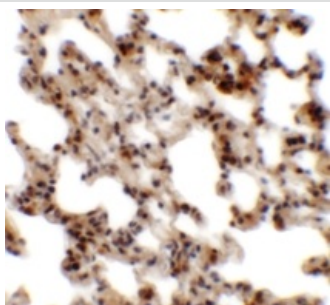
**Lane 1 :** Anti-Coronin-7 antibody (ab117446) at 1 µg/ml

**Lane 2 :** Anti-Coronin-7 antibody (ab117446) at 2 µg/ml

**All lanes :** Rat lung tissue lysate

Lysates/proteins at 15 µg per lane.

**Predicted band size:** 101 kDa



Immunohistochemistry (Formalin/PFA-fixed paraffin-embedded sections) - Anti-Coronin-7 antibody (ab117446)

Immunohistochemistry of Coronin-7 in rat lung tissue with ab117446 antibody at 2.5 ug/mL.

**Please note:** All products are "FOR RESEARCH USE ONLY. NOT FOR USE IN DIAGNOSTIC PROCEDURES"

### Our Abpromise to you: Quality guaranteed and expert technical support

- Replacement or refund for products not performing as stated on the datasheet
- Valid for 12 months from date of delivery
- Response to your inquiry within 24 hours
- We provide support in Chinese, English, French, German, Japanese and Spanish
- Extensive multi-media technical resources to help you
- We investigate all quality concerns to ensure our products perform to the highest standards

If the product does not perform as described on this datasheet, we will offer a refund or replacement. For full details of the Abpromise, please visit <https://www.abcam.com/abpromise> or contact our technical team.

### Terms and conditions

- Guarantee only valid for products bought direct from Abcam or one of our authorized distributors