

Product datasheet

Anti-COX6B1 antibody [3F9D3D11AF6] ab110266

11 References 2 Images

Overview

Product name	Anti-COX6B1 antibody [3F9D3D11AF6]
Description	Mouse monoclonal [3F9D3D11AF6] to COX6B1
Host species	Mouse
Tested applications	Suitable for: ICC/IF, WB
Species reactivity	Reacts with: Mouse, Rat, Cow, Human
Immunogen	Full length native protein (purified). This information is considered to be commercially sensitive.
Positive control	Human, cow, rat and mouse heart. IF/ICC: HeLa cell line.
General notes	This antibody clone is manufactured by Abcam.

Product was previously marketed under the MitoSciences sub-brand.

If you require this antibody in a particular buffer formulation or a particular conjugate for your experiments, please contact orders@abcam.com or you can find further information [here](#).

This product was previously labelled as Cytochrome C Oxidase subunit VIb

Reproducibility is key to advancing scientific discovery and accelerating scientists' next breakthrough.

Abcam is leading the way with our range of recombinant antibodies, knockout-validated antibodies and knockout cell lines, all of which support improved reproducibility.

We are also planning to innovate the way in which we present recommended applications and species on our product datasheets, so that only applications & species that have been tested in our own labs, our suppliers or by selected trusted collaborators are covered by our Abpromise™ guarantee.

In preparation for this, we have started to update the applications & species that this product is Abpromise guaranteed for.

We are also updating the applications & species that this product has been “predicted to work with,” however this information is not covered by our Abpromise guarantee.

Applications & species from publications and Abreviews that have not been tested in our own labs or in those of our suppliers are not covered by the Abpromise guarantee.

Please check that this product meets your needs before purchasing. If you have any questions, special requirements or concerns, please send us an inquiry and/or contact our Support team ahead of purchase. Recommended alternatives for this product can be found below, as well as customer reviews and Q&As.

Properties

Form	Liquid
Storage instructions	Shipped at 4°C. Store at +4°C. Do Not Freeze.
Storage buffer	Preservative: 0.02% Sodium azide Constituent: HEPES buffered saline
Purification notes	Near homogeneity as judged by SDS-PAGE. ab110266 was produced in vitro using hybridomas grown in serum-free medium, and then purified by biochemical fractionation.
Clonality	Monoclonal
Clone number	3F9D3D11AF6
Isotype	IgG1
Light chain type	kappa

Applications

Our [Abpromise guarantee](#) covers the use of **ab110266** in the following tested applications.

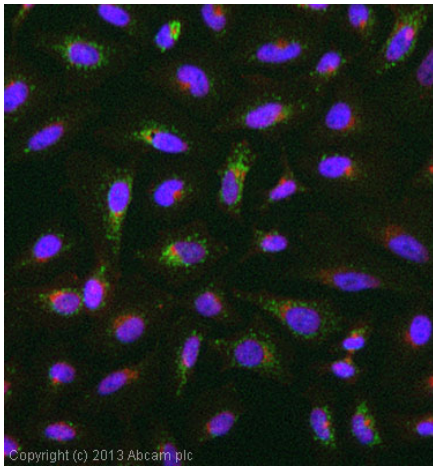
The application notes include recommended starting dilutions; optimal dilutions/concentrations should be determined by the end user.

Application	Abreviews	Notes
ICC/IF		Use a concentration of 5 µg/ml.
WB		Use a concentration of 1 µg/ml. Predicted molecular weight: 10 kDa.

Target

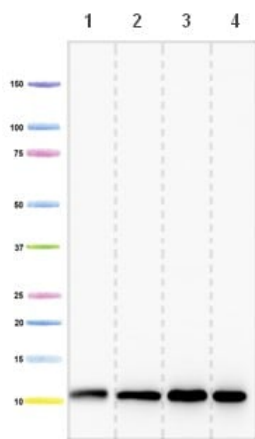
Function	Connects the two COX monomers into the physiological dimeric form.
Involvement in disease	Defects in COX6B1 are a cause of mitochondrial complex IV deficiency (MT-C4D) [MIM:220110]; also known as cytochrome c oxidase deficiency. A disorder of the mitochondrial respiratory chain with heterogeneous clinical manifestations, ranging from isolated myopathy to severe multisystem disease affecting several tissues and organs. Features include hypertrophic cardiomyopathy, hepatomegaly and liver dysfunction, hypotonia, muscle weakness, exercise intolerance, developmental delay, delayed motor development and mental retardation. A subset of patients manifest Leigh syndrome.
Sequence similarities	Belongs to the cytochrome c oxidase subunit 6B family.
Cellular localization	Mitochondrion intermembrane space.

Images



Immunocytochemistry/ Immunofluorescence - Anti-COX6B1 antibody [3F9D3D11AF6] (ab110266)

ICC/IF image of ab110266 stained HeLa cells. The cells were 4% formaldehyde fixed (10 min) and then incubated in 1%BSA / 10% normal goat serum / 0.3M glycine in 0.1% PBS-Tween for 1h to permeabilise the cells and block non-specific protein-protein interactions. The cells were then incubated with the antibody (ab110266, 5µg/ml) overnight at +4°C. The secondary antibody (green) was ab96879, DyLight® 488 goat anti-mouse IgG (H+L) used at a 1/250 dilution for 1h. Alexa Fluor® 594 WGA was used to label plasma membranes (red) at a 1/200 dilution for 1h. DAPI was used to stain the cell nuclei (blue) at a concentration of 1.43µM.



Western blot - Anti-COX6B1 antibody [3F9D3D11AF6] (ab110266)

All lanes : Anti-COX6B1 antibody [3F9D3D11AF6] (ab110266) at 1 µg/ml

Lane 1 : Isolated mitochondria from Human Heart at 5 µg

Lane 2 : Isolated mitochondria from Bovine Heart at 4 µg

Lane 3 : Isolated mitochondria from Rat Heart at 10 µg

Lane 4 : Isolated mitochondria from Mouse Heart at 10 µg

Predicted band size: 10 kDa

Please note: All products are "FOR RESEARCH USE ONLY. NOT FOR USE IN DIAGNOSTIC PROCEDURES"

Our Abpromise to you: Quality guaranteed and expert technical support

- Replacement or refund for products not performing as stated on the datasheet
- Valid for 12 months from date of delivery
- Response to your inquiry within 24 hours
- We provide support in Chinese, English, French, German, Japanese and Spanish
- Extensive multi-media technical resources to help you
- We investigate all quality concerns to ensure our products perform to the highest standards

If the product does not perform as described on this datasheet, we will offer a refund or replacement. For full details of the Abpromise, please visit <https://www.abcam.com/abpromise> or contact our technical team.

Terms and conditions

- Guarantee only valid for products bought direct from Abcam or one of our authorized distributors