

Product datasheet

Anti-CPE antibody ab186724

[2 Images](#)

Overview

Product name	Anti-CPE antibody
Description	Rabbit polyclonal to CPE
Host species	Rabbit
Tested applications	Suitable for: ICC/IF, WB, IHC-P
Species reactivity	Reacts with: Mouse, Rat, Human
Immunogen	Recombinant full length protein corresponding to Human CPE. Database link: P16870
Positive control	Extracts of A549, MCF7, mouse brain and mouse kidney cell lines.
General notes	This product was previously labelled as Carboxypeptidase H

Properties

Form	Liquid
Storage instructions	Shipped at 4°C. Store at +4°C short term (1-2 weeks). Upon delivery aliquot. Store at -20°C long term. Avoid freeze / thaw cycle.
Storage buffer	pH: 7.3 Preservative: 0.02% Sodium azide Constituents: 49% PBS, 50% Glycerol
Purity	Immunogen affinity purified
Clonality	Polyclonal
Isotype	IgG

Applications

Our [Abpromise guarantee](#) covers the use of **ab186724** in the following tested applications.

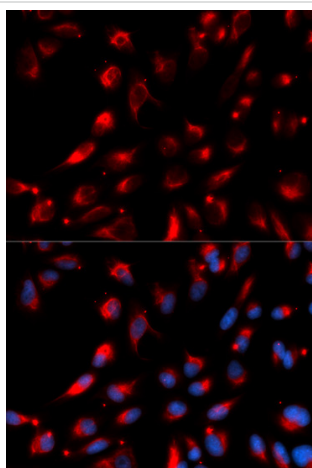
The application notes include recommended starting dilutions; optimal dilutions/concentrations should be determined by the end user.

Application	Abreviews	Notes
ICC/IF		Use at an assay dependent concentration.
WB		1/500 - 1/2000. Predicted molecular weight: 53 kDa.
IHC-P		1/50 - 1/200.

Target

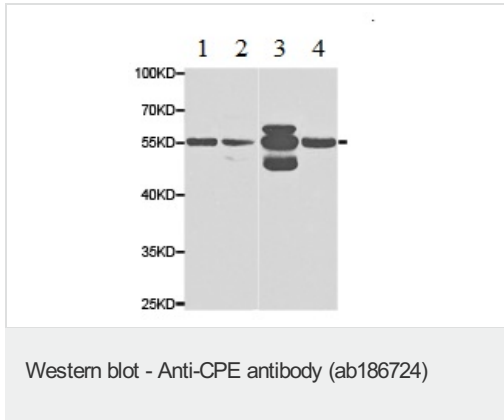
Function	Removes residual C-terminal Arg or Lys remaining after initial endoprotease cleavage during prohormone processing. Processes proinsulin.
Tissue specificity	Isoform 2, but not isoform 1, is overexpressed in hepatocellular carcinoma (at protein level), as well as in other tumors, including pheochromocytomas and paragangliomas.
Sequence similarities	Belongs to the peptidase M14 family.
Cellular localization	Nucleus and Secreted. Secretory granules of pancreatic islets, adrenal gland, pituitary and brain.

Images



Immunocytochemistry/Immunofluorescence analysis of U2OS cells using ab186724. Blue DAPI for nuclear staining.

Immunocytochemistry/ Immunofluorescence - Anti-CPE antibody (ab186724)



All lanes : Anti-CPE antibody (ab186724) at 1/500 dilution

Lane 1 : Extract of A549 cell line.

Lane 2 : Extract of MCF7 cell line.

Lane 3 : Extract of mouse brain cell line.

Lane 4 : Extract of mouse kidney cell line.

Predicted band size: 53 kDa

Please note: All products are "FOR RESEARCH USE ONLY. NOT FOR USE IN DIAGNOSTIC PROCEDURES"

Our Abpromise to you: Quality guaranteed and expert technical support

- Replacement or refund for products not performing as stated on the datasheet
- Valid for 12 months from date of delivery
- Response to your inquiry within 24 hours
- We provide support in Chinese, English, French, German, Japanese and Spanish
- Extensive multi-media technical resources to help you
- We investigate all quality concerns to ensure our products perform to the highest standards

If the product does not perform as described on this datasheet, we will offer a refund or replacement. For full details of the Abpromise, please visit <https://www.abcam.com/abpromise> or contact our technical team.

Terms and conditions

- Guarantee only valid for products bought direct from Abcam or one of our authorized distributors