




Product datasheet

Anti-CPLX2 antibody ab232868

5 Images

Overview

Product name	Anti-CPLX2 antibody
Description	Rabbit polyclonal to CPLX2
Host species	Rabbit
Tested applications	Suitable for: WB
Species reactivity	Reacts with: Mouse, Rat Predicted to work with: Cow, Human 
Immunogen	Recombinant full length protein (His-tag) corresponding to Mouse CPLX2 aa 1-134. (Expressed in E.coli). Sequence: MDFVMKQALGGATKDMGKMLGGEEEKDPDAQKKEE ERQEALRQQEEERKA KHARMEAEREKVRQQIRDKYGLKKKEEKEAEEKAAL QPCEGSLTRPKKA IPAGCGDEEEEEESILDTVLKYLPGPLQDMFKK Database link: P84086  Run BLAST with  Run BLAST with
Positive control	WB: Recombinant mouse CPLX2 protein; Mouse and rat cerebrum and cerebellum lysates.

Properties

Form	Liquid
Storage instructions	Shipped at 4°C. Store at +4°C short term (1-2 weeks). Upon delivery aliquot. Store at -20°C long term. Avoid freeze / thaw cycle.
Storage buffer	pH: 7.40 Preservative: 0.02% Sodium azide Constituents: PBS, 50% Glycerol
Purity	Immunogen affinity purified
Purification notes	ab232868 was purified by antigen-specific affinity chromatography followed by Protein A affinity chromatography.
Clonality	Polyclonal

Isotype

IgG

Applications

Our [Abpromise guarantee](#) covers the use of **ab232868** in the following tested applications.

The application notes include recommended starting dilutions; optimal dilutions/concentrations should be determined by the end user.

Application	Abreviews	Notes
WB		Use a concentration of 0.2 - 2 µg/ml. Predicted molecular weight: 15 kDa.

Target

Function

Positively regulates a late step in synaptic vesicle exocytosis. Also involved in mast cell exocytosis.

Tissue specificity

Nervous system. In hippocampus and cerebellum, expressed mainly by excitatory neurons. Down-regulated in brain cortex from patients suffering from Huntington disease, bipolar disorder or major depression. Down-regulated in cerebellum from patients with schizophrenia.

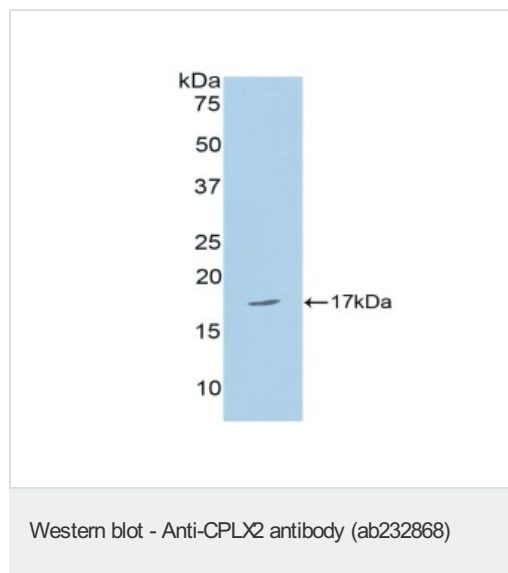
Sequence similarities

Belongs to the complexin/synaphin family.

Cellular localization

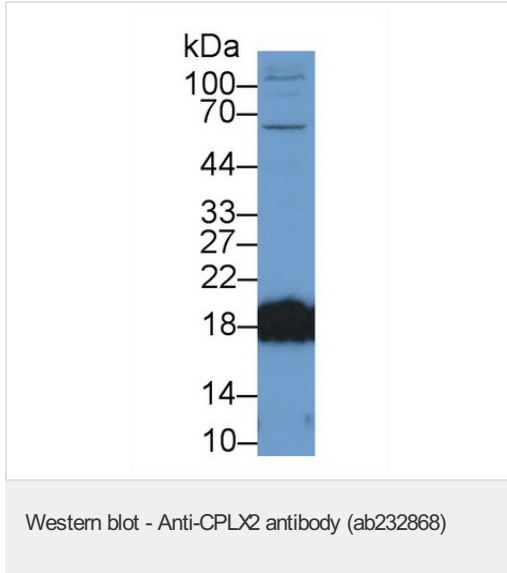
Cytoplasm > cytosol. Enriched at synaptic-releasing sites in mature neurons.

Images



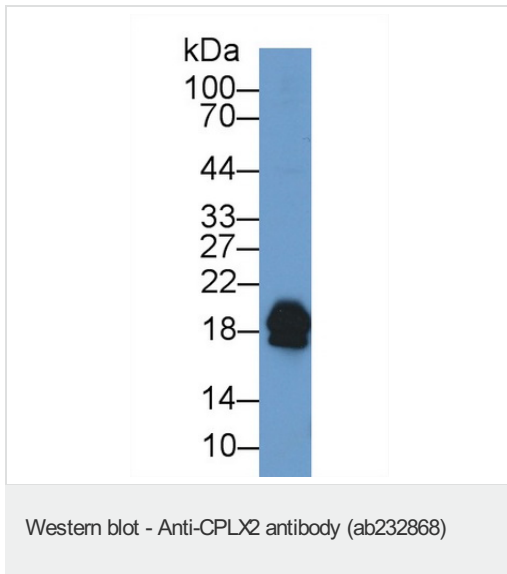
Anti-CPLX2 antibody (ab232868) at 2 µg/ml + Recombinant mouse CPLX2 protein

Predicted band size: 15 kDa



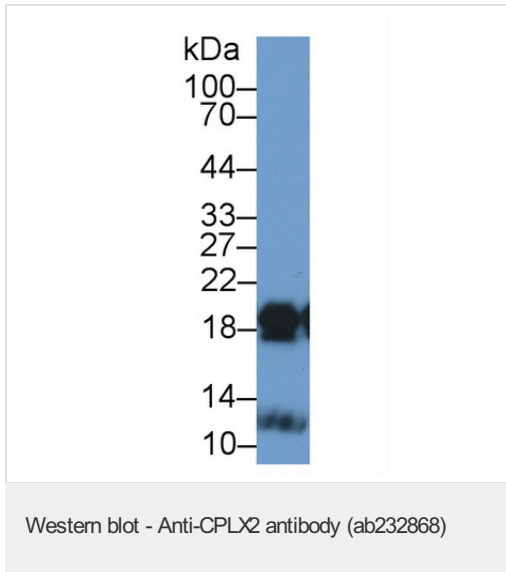
Anti-CPLX2 antibody (ab232868) at 2 μ g/ml + Rat cerebrum lysate

Predicted band size: 15 kDa



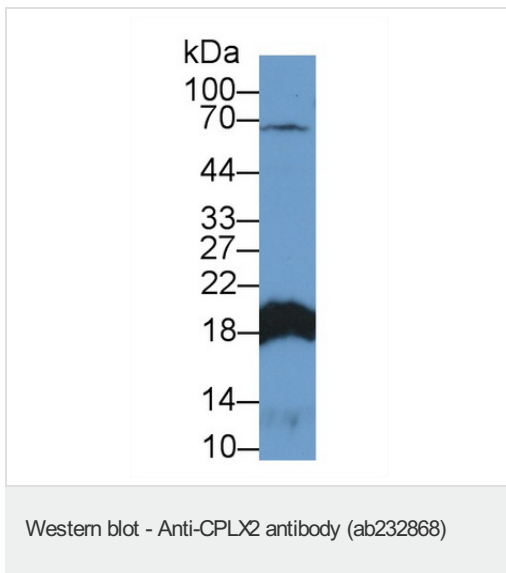
Anti-CPLX2 antibody (ab232868) at 2 μ g/ml + Mouse cerebrum lysate

Predicted band size: 15 kDa



Anti-CPLX2 antibody (ab232868) at 2 µg/ml + Mouse cerebellum lysate

Predicted band size: 15 kDa



Anti-CPLX2 antibody (ab232868) at 2 µg/ml + Rat cerebellum lysate

Predicted band size: 15 kDa

Please note: All products are "FOR RESEARCH USE ONLY. NOT FOR USE IN DIAGNOSTIC PROCEDURES"

Our Promise to you: Quality guaranteed and expert technical support

- Replacement or refund for products not performing as stated on the datasheet
- Valid for 12 months from date of delivery

- Response to your inquiry within 24 hours
- We provide support in Chinese, English, French, German, Japanese and Spanish
- Extensive multi-media technical resources to help you
- We investigate all quality concerns to ensure our products perform to the highest standards

If the product does not perform as described on this datasheet, we will offer a refund or replacement. For full details of the Abpromise, please visit <https://www.abcam.com/abpromise> or contact our technical team.

Terms and conditions

- Guarantee only valid for products bought direct from Abcam or one of our authorized distributors