

Product datasheet

Anti-CPSF2/CPSF100 antibody [EPR7599] ab126760

Recombinant RabMAb

2 References 1 Image

Overview

Product name	Anti-CPSF2/CPSF100 antibody [EPR7599]
Description	Rabbit monoclonal [EPR7599] to CPSF2/CPSF100
Host species	Rabbit
Tested applications	Suitable for: WB, IP Unsuitable for: Flow Cyt, ICC or IHC-P
Species reactivity	Reacts with: Mouse, Rat, Human
Immunogen	Synthetic peptide within Human CPSF2/CPSF100 aa 700-800. The exact sequence is proprietary.
Positive control	HeLa, Ramos, Jurkat, and 293T cell lysates.
General notes	

This product was previously labelled as CPSF2

This product is a recombinant monoclonal antibody, which offers several advantages including:

- High batch-to-batch consistency and reproducibility
- Improved sensitivity and specificity
- Long-term security of supply
- Animal-free production

For more information [see here](#).

Our RabMAb[®] technology is a patented hybridoma-based technology for making rabbit monoclonal antibodies. For details on our patents, please refer to [RabMAb[®] patents](#).

Properties

Form	Liquid
Storage instructions	Shipped at 4°C. Store at -20°C. Stable for 12 months at -20°C.
Storage buffer	pH: 7.20 Preservative: 0.01% Sodium azide Constituents: 9% PBS, 40% Glycerol, 0.05% BSA, 50% Tissue culture supernatant

Purity	Tissue culture supernatant
Clonality	Monoclonal
Clone number	EPR7599
Isotype	IgG

Applications

Our [Abpromise guarantee](#) covers the use of **ab126760** in the following tested applications.

The application notes include recommended starting dilutions; optimal dilutions/concentrations should be determined by the end user.

Application	Abreviews	Notes
WB		1/1000 - 1/10000. Detects a band of approximately 103 kDa (predicted molecular weight: 88 kDa).
IP		1/10 - 1/100.

Application notes Is unsuitable for Flow Cyt, ICC or IHC-P.

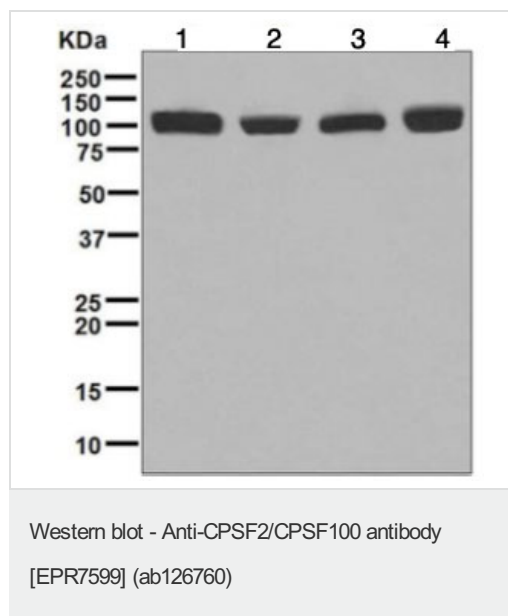
Target

Function Component of the cleavage and polyadenylation specificity factor (CPSF) complex that play a key role in pre-mRNA 3'-end formation, recognizing the AAUAAA signal sequence and interacting with poly(A) polymerase and other factors to bring about cleavage and poly(A) addition. Involved in the histone 3' end pre-mRNA processing.

Sequence similarities Belongs to the metallo-beta-lactamase superfamily. RNA-metabolizing metallo-beta-lactamase-like family. CPSF2/YSH1 subfamily.

Cellular localization Nucleus.

Images



All lanes : Anti-CPSF2/CPSF100 antibody [EPR7599] (ab126760) at 1/1000 dilution

- Lane 1** : HeLa cell lysate
- Lane 2** : Ramos cell lysate
- Lane 3** : Jurkat cell lysate
- Lane 4** : 293T cell lysate

Lysates/proteins at 10 µg per lane.

Secondary

All lanes : HRP-conjugated goat anti-rabbit at 1/2000 dilution

Predicted band size: 88 kDa

Please note: All products are "FOR RESEARCH USE ONLY. NOT FOR USE IN DIAGNOSTIC PROCEDURES"

Our Abpromise to you: Quality guaranteed and expert technical support

- Replacement or refund for products not performing as stated on the datasheet
- Valid for 12 months from date of delivery
- Response to your inquiry within 24 hours

- We provide support in Chinese, English, French, German, Japanese and Spanish
- Extensive multi-media technical resources to help you
- We investigate all quality concerns to ensure our products perform to the highest standards

If the product does not perform as described on this datasheet, we will offer a refund or replacement. For full details of the Abpromise, please visit <https://www.abcam.com/abpromise> or contact our technical team.

Terms and conditions

- Guarantee only valid for products bought direct from Abcam or one of our authorized distributors