

Product datasheet

Anti-CPTP antibody - N-terminal ab185574

2 Images

Overview

Product name	Anti-CPTP antibody - N-terminal
Description	Rabbit polyclonal to CPTP - N-terminal
Host species	Rabbit
Tested applications	Suitable for: IHC-P, ICC/IF
Species reactivity	Reacts with: Human
Immunogen	Recombinant fragment corresponding to Human CPTP aa 1-100 (N terminal). Database link: Q5TA50 Run BLAST with Run BLAST with
Positive control	IHC-P: Human small intestine tissue. ICC/IF: A431 cells.
General notes	<p>The Life Science industry has been in the grips of a reproducibility crisis for a number of years. Abcam is leading the way in addressing this with our range of recombinant monoclonal antibodies and knockout edited cell lines for gold-standard validation. Please check that this product meets your needs before purchasing.</p> <p>If you have any questions, special requirements or concerns, please send us an inquiry and/or contact our Support team ahead of purchase. Recommended alternatives for this product can be found below, along with publications, customer reviews and Q&As</p>

Properties

Form	Liquid
Storage instructions	Shipped at 4°C. Store at +4°C short term (1-2 weeks). Upon delivery aliquot. Store at -20°C long term. Avoid freeze / thaw cycle.
Storage buffer	pH: 7.20 Preservative: 0.02% Sodium azide Constituents: 59% PBS, 40% Glycerol (glycerin, glycerine)
Purity	Immunogen affinity purified
Clonality	Polyclonal
Isotype	IgG

Applications

The Abpromise guarantee

Our [Abpromise guarantee](#) covers the use of ab185574 in the following tested applications.

The application notes include recommended starting dilutions; optimal dilutions/concentrations should be determined by the end user.

Application	Abreviews	Notes
IHC-P		1/20 - 1/50. Perform heat mediated antigen retrieval with citrate buffer pH 6 before commencing with IHC staining protocol.
ICC/IF		Use a concentration of 0.25 - 2 µg/ml.

Target

Function

Mediates the intracellular transfer of ceramide-1-phosphate between organelle membranes and the cell membrane. Required for normal structure of the Golgi stacks. Can bind phosphoceramides with a variety of aliphatic chains, but has a preference for lipids with saturated C16:0 or monounsaturated C18:1 aliphatic chains, and is inefficient with phosphoceramides containing lignoceryl (C24:0). Plays a role in the regulation of the cellular levels of ceramide-1-phosphate, and thereby contributes to the regulation of phospholipase PLA2G4A activity and the release of arachidonic acid. Has no activity with galactosylceramide, lactosylceramide, sphingomyelin, phosphatidylcholine, phosphatidic acid and ceramide.

Tissue specificity

Ubiquitous. Detected in heart, brain, placenta, lung, liver, skeletal muscle, kidney, pancreas, spleen, thymus, prostate, testis, ovary, small intestine, colon and peripheral blood leukocytes.

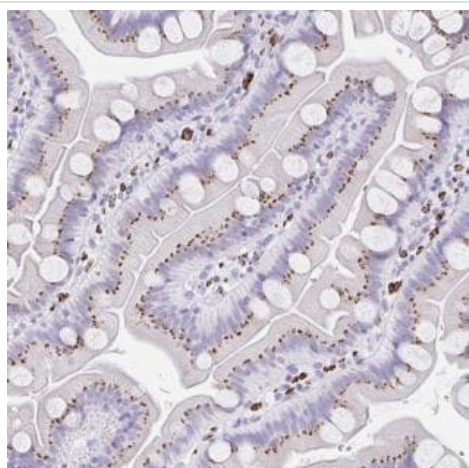
Sequence similarities

Belongs to the GLTP family.

Cellular localization

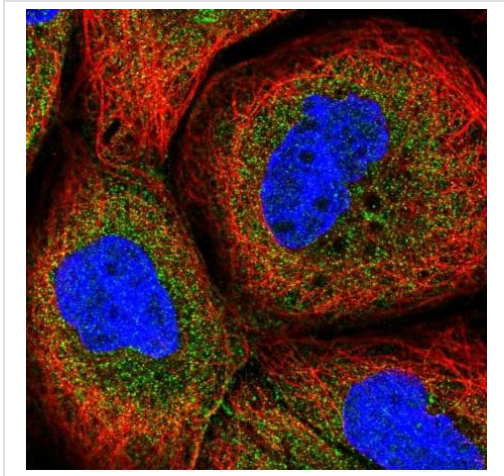
Cytoplasm > cytosol. Golgi apparatus > trans-Golgi network membrane. Cell membrane. Endosome membrane. Nucleus outer membrane.

Images



Immunohistochemistry of paraffin-embedded Human small intestine tissue labeling CPTP using ab185574 at 1/20.

Immunohistochemistry (Formalin/PFA-fixed paraffin-embedded sections) - Anti-CPTP antibody - N-terminal (ab185574)



A431 cells stained for CPTP (green) using ab185574 at 2 µg/ml in ICC/IF.

Immunocytochemistry/ Immunofluorescence - Anti-CPTP antibody - N-terminal (ab185574)

Please note: All products are "FOR RESEARCH USE ONLY. NOT FOR USE IN DIAGNOSTIC PROCEDURES"

Our Abpromise to you: Quality guaranteed and expert technical support

- Replacement or refund for products not performing as stated on the datasheet
- Valid for 12 months from date of delivery
- Response to your inquiry within 24 hours
- We provide support in Chinese, English, French, German, Japanese and Spanish
- Extensive multi-media technical resources to help you
- We investigate all quality concerns to ensure our products perform to the highest standards

If the product does not perform as described on this datasheet, we will offer a refund or replacement. For full details of the Abpromise, please visit <https://www.abcam.com/abpromise> or contact our technical team.

Terms and conditions

- Guarantee only valid for products bought direct from Abcam or one of our authorized distributors