

Product datasheet

Anti-CR1L antibody [EPR9604(B)] ab169543

Recombinant RabMAb

2 Images

Overview

Product name	Anti-CR1L antibody [EPR9604(B)]
Description	Rabbit monoclonal [EPR9604(B)] to CR1L
Host species	Rabbit
Tested applications	Suitable for: WB, Flow Cyt Unsuitable for: ICC/IF, IHC-P or IP
Species reactivity	Reacts with: Human
Immunogen	Synthetic peptide corresponding to Human CR1L.
Positive control	HepG2, Ramos, K562 and MOLT4 cell lysates; HepG2 cells.
General notes	Mouse, Rat: We have preliminary internal testing data to indicate this antibody may not react with these species. Please contact us for more information.

Our RabMAb[®] technology is a patented hybridoma-based technology for making rabbit monoclonal antibodies. For details on our patents, please refer to [RabMAb[®] patents](#).

This product is a [recombinant rabbit monoclonal antibody](#).

Properties

Form	Liquid
Storage instructions	Shipped at 4°C. Store at +4°C short term (1-2 weeks). Upon delivery aliquot. Store at -20°C long term.
Storage buffer	Preservative: 0.01% Sodium azide Constituents: 9% PBS, 40% Glycerol, 0.05% BSA, 50% Tissue culture supernatant
Purity	Tissue culture supernatant
Clonality	Monoclonal
Clone number	EPR9604(B)
Isotype	IgG

Applications

Our [Abpromise guarantee](#) covers the use of **ab169543** in the following tested applications.

The application notes include recommended starting dilutions; optimal dilutions/concentrations should be determined by the end user.

Application	Abreviews	Notes
WB		1/1000 - 1/10000. Detects a band of approximately 64 kDa (predicted molecular weight: 63 kDa).
Flow Cyt		1/100 - 1/500. ab172730 - Rabbit monoclonal IgG, is suitable for use as an isotype control with this antibody.

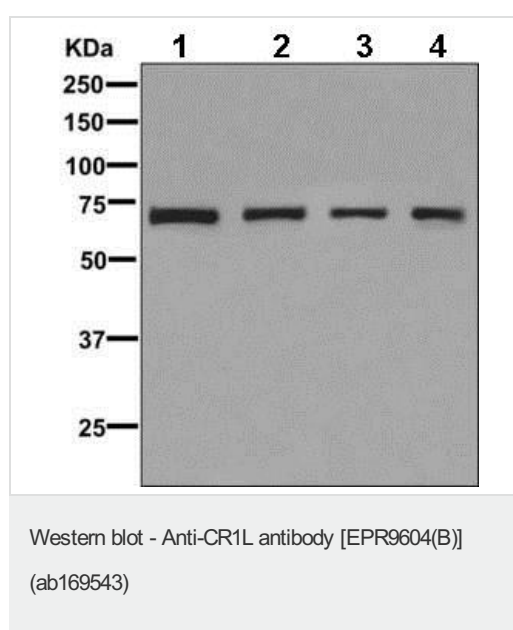
Application notes Is unsuitable for ICC/IF, IHC-P or IP.

Target

Relevance Interacts with iC4 (methylamine-treated C4) but not for iC3 (methylamine-treated C3). Belongs to the receptors of complement activation (RCA) family. Contains 8 Sushi (CCP/SCR) domains.

Cellular localization Cytoplasm. Membrane. Secreted. Note: Predominantly found in association with the membrane fraction, but also located in the cytoplasm and in the supernatant.

Images



All lanes : Anti-CR1L antibody [EPR9604(B)] (ab169543) at 1/1000 dilution

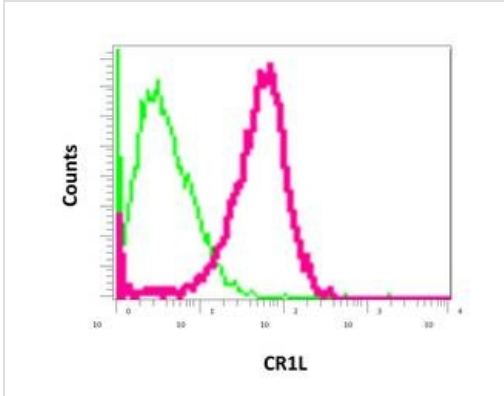
- Lane 1** : HepG2 cell lysate
- Lane 2** : Ramos cell lysate
- Lane 3** : K562 cell lysate
- Lane 4** : MOLT4 cell lysate

Lysates/proteins at 10 µg per lane.

Secondary

All lanes : Goat anti-rabbit HRP at 1/2000 dilution

Predicted band size: 63 kDa



Flow Cytometric analysis of permeabilized HepG2 cells labeling CR1L with ab169543 at 1/100 dilution (red) compared to a rabbit IgG (negative) (green).

Flow Cytometry - Anti-CR1L antibody [EPR9604(B)]
(ab169543)

Please note: All products are "FOR RESEARCH USE ONLY. NOT FOR USE IN DIAGNOSTIC PROCEDURES"

Our Abpromise to you: Quality guaranteed and expert technical support

- Replacement or refund for products not performing as stated on the datasheet
- Valid for 12 months from date of delivery
- Response to your inquiry within 24 hours
- We provide support in Chinese, English, French, German, Japanese and Spanish
- Extensive multi-media technical resources to help you
- We investigate all quality concerns to ensure our products perform to the highest standards

If the product does not perform as described on this datasheet, we will offer a refund or replacement. For full details of the Abpromise, please visit <https://www.abcam.com/abpromise> or contact our technical team.

Terms and conditions

- Guarantee only valid for products bought direct from Abcam or one of our authorized distributors