




Product datasheet

Anti-CRAMP1L antibody ab176595

1 Image

Overview

<b>Product name</b>	Anti-CRAMP1L antibody
<b>Description</b>	Rabbit polyclonal to CRAMP1L
<b>Host species</b>	Rabbit
<b>Tested applications</b>	<b>Suitable for:</b> IP <b>Unsuitable for:</b> WB
<b>Species reactivity</b>	<b>Reacts with:</b> Human <b>Predicted to work with:</b> Mouse 
<b>Immunogen</b>	Synthetic peptide within Human CRAMP1L aa 300-350. The exact sequence is proprietary. NP_065876.3 Sequence:  LCDPDGLSDE DQKPVRLPLK VPIELQPRNN HAWARVQSLA QNPRLRMVE  Database link: <a href="#">Q96RY5</a>   <a href="#">Run BLAST with</a>  <a href="#">Run BLAST with</a>
<b>Positive control</b>	Jurkat whole cell lysate

Properties

<b>Form</b>	Liquid
<b>Storage instructions</b>	Shipped at 4°C. Store at +4°C short term (1-2 weeks). Upon delivery aliquot. Store at -20°C long term. Avoid freeze / thaw cycle.
<b>Storage buffer</b>	Preservative: 0.09% Sodium azide Constituent: 99% Tris citrate/phosphate  pH 7 to 8
<b>Purity</b>	Immunogen affinity purified
<b>Purification notes</b>	ab176595 was affinity purified using an epitope specific to CRAMP1L immobilized on solid support.
<b>Clonality</b>	Polyclonal
<b>Isotype</b>	IgG

## Applications

Our [Abpromise guarantee](#) covers the use of **ab176595** in the following tested applications.

The application notes include recommended starting dilutions; optimal dilutions/concentrations should be determined by the end user.

Application	Abreviews	Notes
IP		Use at 2-10 µg/mg of lysate.

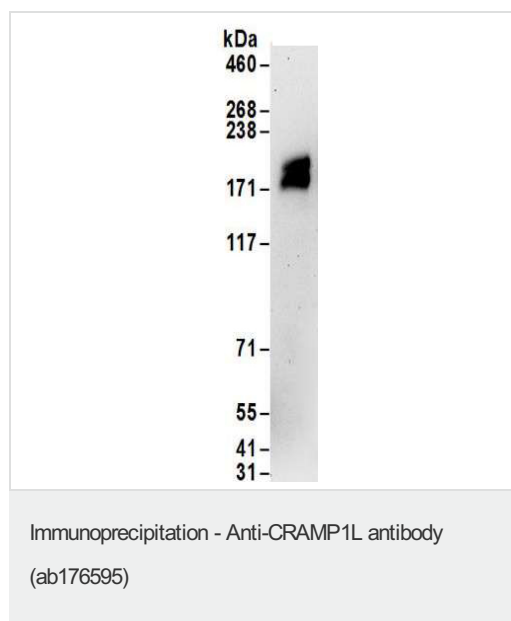
**Application notes** Is unsuitable for WB.

## Target

**Sequence similarities** Belongs to the cramped family.  
Contains 1 SANT domain.

**Cellular localization** Nucleus.

## Images



Detection of CRAMP1L by Western Blot of Immunoprecipitate.  
Anti-CRAMP1L antibody at 0.4µg/ml labeling CRAMP1L in Jurkat whole cell lysate immunoprecipitated using ab176595 at 6µg/mg lysate (1 mg/IP; 20% of IP loaded/lane). Detection: Chemiluminescence with exposure time of 3 minutes.

**Please note:** All products are "FOR RESEARCH USE ONLY. NOT FOR USE IN DIAGNOSTIC PROCEDURES"

## Our Abpromise to you: Quality guaranteed and expert technical support

- Replacement or refund for products not performing as stated on the datasheet
- Valid for 12 months from date of delivery
- Response to your inquiry within 24 hours
- We provide support in Chinese, English, French, German, Japanese and Spanish

- Extensive multi-media technical resources to help you
- We investigate all quality concerns to ensure our products perform to the highest standards

If the product does not perform as described on this datasheet, we will offer a refund or replacement. For full details of the Abpromise, please visit <https://www.abcam.com/abpromise> or contact our technical team.

### **Terms and conditions**

---

- Guarantee only valid for products bought direct from Abcam or one of our authorized distributors