

Product datasheet

Anti-CRB3 antibody ab173169

1 References 1 Image

Overview

Product name	Anti-CRB3 antibody
Description	Rabbit polyclonal to CRB3
Host species	Rabbit
Tested applications	Suitable for: WB
Species reactivity	Reacts with: Mouse, Human
Immunogen	Synthetic peptide within Human CRB3 aa 66-95 (internal sequence) conjugated to Keyhole Limpet Haemocyanin (KLH). The exact sequence is proprietary. (NP_631900.1, NP_777377.1) Database link: Q9BUF7
Positive control	Mouse spleen tissue lysate

Properties

Form	Liquid
Storage instructions	Shipped at 4°C. Store at +4°C short term (1-2 weeks). Upon delivery aliquot. Store at -20°C long term. Avoid freeze / thaw cycle.
Storage buffer	Preservative: 0.09% Sodium azide Constituent: 99% PBS
Purity	Immunogen affinity purified
Purification notes	ab173169 is purified through a protein A column, followed by peptide affinity purification
Clonality	Polyclonal
Isotype	IgG

Applications

Our [Abpromise guarantee](#) covers the use of **ab173169** in the following tested applications.

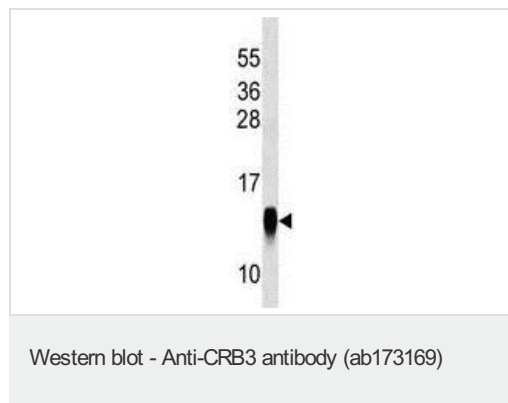
The application notes include recommended starting dilutions; optimal dilutions/concentrations should be determined by the end user.

Application	Abreviews	Notes
WB		1/100 - 1/500. Predicted molecular weight: 13 kDa.

Target

Function	Involved in the establishment of cell polarity in mammalian epithelial cells. Regulates the morphogenesis of tight junctions.
Tissue specificity	Preferentially expressed in epithelial tissues. Expressed at high levels in lung, kidney, retina, colon and mammary glands. Expressed at moderate levels in liver, spleen, pancreas, placenta and prostate.
Domain	The PDZ-binding motif is involved in the interactions with PARD6A and MPP5.
Cellular localization	Apical cell membrane. Cell junction > tight junction. Localizes primarily to the apical membrane with a small fraction in the upper part of tight junctions of epithelial cells.

Images



Anti-CRB3 antibody (ab173169) at 1/100 dilution + mouse spleen tissue lysate at 35 µg

Predicted band size: 13 kDa

Please note: All products are "FOR RESEARCH USE ONLY AND ARE NOT INTENDED FOR DIAGNOSTIC OR THERAPEUTIC USE"

Our Abpromise to you: Quality guaranteed and expert technical support

- Replacement or refund for products not performing as stated on the datasheet
- Valid for 12 months from date of delivery
- Response to your inquiry within 24 hours
- We provide support in Chinese, English, French, German, Japanese and Spanish
- Extensive multi-media technical resources to help you
- We investigate all quality concerns to ensure our products perform to the highest standards

If the product does not perform as described on this datasheet, we will offer a refund or replacement. For full details of the Abpromise, please visit <https://www.abcam.com/abpromise> or contact our technical team.

Terms and conditions

- Guarantee only valid for products bought direct from Abcam or one of our authorized distributors