

Product datasheet

Anti-Cre recombinase antibody ab190177

★★★★☆ 8 Abreviews 13 References 2 Images

Overview

Product name	Anti-Cre recombinase antibody
Description	Rabbit polyclonal to Cre recombinase
Host species	Rabbit
Tested applications	Suitable for: WB, ICC/IF
Species reactivity	Reacts with: Bacteriophage P1
Immunogen	Recombinant full length protein corresponding to Bacteriophage P1 Cre recombinase aa 1 to the C-terminus. The immunogen was tagged with a 6xHis tag and an S tag. Database link: P06956 Run BLAST with Run BLAST with
Positive control	WB: Human HEK-293T cells transfected with GFP-Cre recombinase cell lysate. ICC/IF: U-2 OS cells transfected with GFP-Cre recombinase.
General notes	<p>The Life Science industry has been in the grips of a reproducibility crisis for a number of years. Abcam is leading the way in addressing this with our range of recombinant monoclonal antibodies and knockout edited cell lines for gold-standard validation. Please check that this product meets your needs before purchasing.</p> <p>If you have any questions, special requirements or concerns, please send us an inquiry and/or contact our Support team ahead of purchase. Recommended alternatives for this product can be found below, along with publications, customer reviews and Q&As</p>

Properties

Form	Liquid
Storage instructions	Shipped at 4°C. Store at +4°C short term (1-2 weeks). Upon delivery aliquot. Store at -20°C long term. Avoid freeze / thaw cycle.
Storage buffer	Preservative: 0.05% Sodium azide
Purity	Whole antiserum
Clonality	Polyclonal
Isotype	IgG

Applications

The Abpromise guarantee

Our [Abpromise guarantee](#) covers the use of ab190177 in the following tested applications.

The application notes include recommended starting dilutions; optimal dilutions/concentrations should be determined by the end user.

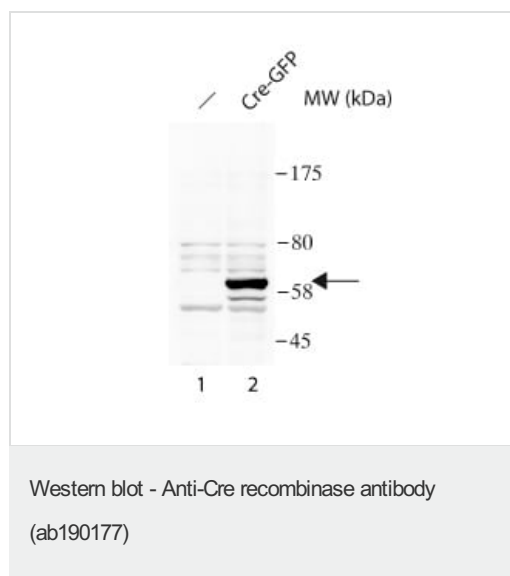
Application	Abreviews	Notes
WB		1/2000. Predicted molecular weight: 39 kDa.
ICC/IF		1/3000.

Target

Relevance

Cre-recombinase is a 38 kDa DNA recombinase derived from the P1 bacteriophage. It is highly specific for a 34 bp DNA sequence (loxP) found in P1 DNA. It catalyzes site-specific recombination between two 34-base-pair LOXP sites. Its role is to maintain the phage genome as a monomeric unit-copy plasmid in the lysogenic state. It is homotetramer when bound to DNA and belongs to the "phage" integrase family.

Images



All lanes : Anti-Cre recombinase antibody (ab190177) at 1/2000 dilution

Lane 1 : HEK-293T (Human epithelial cell line from embryonic kidney transformed with large T antigen) cell lysate

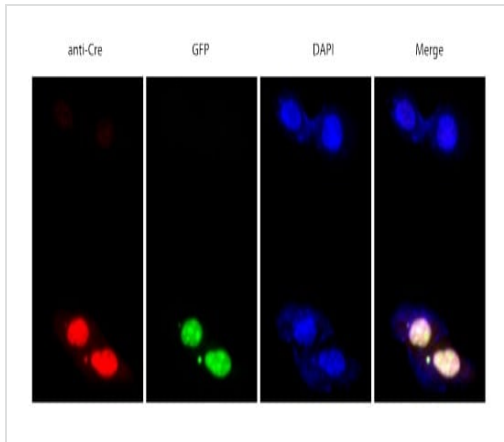
Lane 2 : HEK-293T cells transfected with GFP-Cre recombinase lysate

Lysates/proteins at 40 µg per lane.

Predicted band size: 39 kDa

Predicted band size : 26 kDa (GFP) 38 kDa (Cre)= 64 kDa

WB: 40 µg of whole cell extracts transfer in nitrocellulose, block: 1 hour 5% milk in TBST, incubation with primary antibody o/n @ +4°C in 5% milk TBST.



Immunofluorescent analysis of U-2 OS cells (Human bone osteosarcoma epithelial cell line) transfected with GFP-Cre recombinase (green) labeling Cre recombinase with ab190177 at 1/3000 dilution (red). DAPI staining is shown in blue.

Immunocytochemistry/ Immunofluorescence - Anti-Cre recombinase antibody (ab190177)

Please note: All products are "FOR RESEARCH USE ONLY. NOT FOR USE IN DIAGNOSTIC PROCEDURES"

Our Abpromise to you: Quality guaranteed and expert technical support

- Replacement or refund for products not performing as stated on the datasheet
- Valid for 12 months from date of delivery
- Response to your inquiry within 24 hours
- We provide support in Chinese, English, French, German, Japanese and Spanish
- Extensive multi-media technical resources to help you
- We investigate all quality concerns to ensure our products perform to the highest standards

If the product does not perform as described on this datasheet, we will offer a refund or replacement. For full details of the Abpromise, please visit <https://www.abcam.com/abpromise> or contact our technical team.

Terms and conditions

- Guarantee only valid for products bought direct from Abcam or one of our authorized distributors