




Product datasheet

Anti-Creatine Kinase MM antibody ab174672

★★★★★ 1 Abreviews 1 References 1 Image

Overview

Product name	Anti-Creatine Kinase MM antibody
Description	Goat polyclonal to Creatine Kinase MM
Host species	Goat
Tested applications	Suitable for: WB
Species reactivity	Reacts with: Mouse, Rat, Human Predicted to work with: Rabbit, Chicken, Cow, Dog, Pig 
Immunogen	Synthetic peptide corresponding to Human Creatine Kinase MM aa 258-270 (internal sequence) (Cysteine residue). (NP_001815.2) Sequence: QKIEEIFKKAGHP Database link: P06732  Run BLAST with  Run BLAST with
Positive control	WB: Human and mouse heart lysates.

Properties

Form	Liquid
Storage instructions	Shipped at 4°C. Store at +4°C short term (1-2 weeks). Upon delivery aliquot. Store at -20°C. Avoid freeze / thaw cycle.
Storage buffer	pH: 7.30 Preservative: 0.02% Sodium azide Constituents: 0.5% BSA, 99% Tris buffered saline
Purity	Immunogen affinity purified
Clonality	Polyclonal
Isotype	IgG

Applications

Our [Abpromise guarantee](#) covers the use of **ab174672** in the following tested applications.

The application notes include recommended starting dilutions; optimal dilutions/concentrations should be determined by the end user.

Application	Abreviews	Notes
WB	★★★★★	Use a concentration of 0.5 - 1 µg/ml. Detects a band of approximately 40 kDa (predicted molecular weight: 43 kDa).

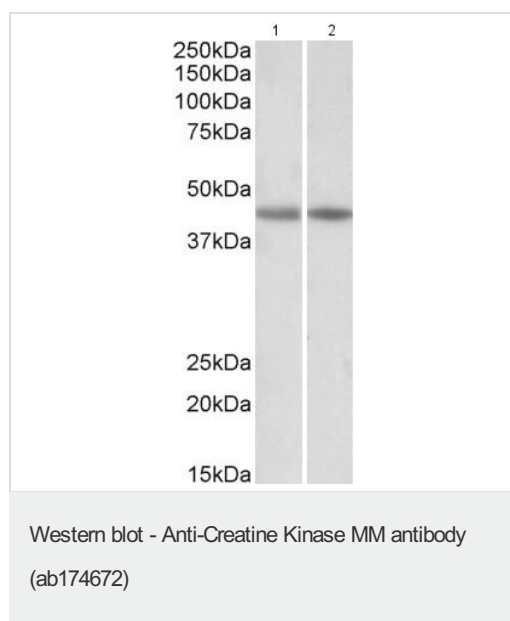
Target

Function Reversibly catalyzes the transfer of phosphate between ATP and various phosphagens (e.g. creatine phosphate). Creatine kinase isoenzymes play a central role in energy transduction in tissues with large, fluctuating energy demands, such as skeletal muscle, heart, brain and spermatozoa.

Sequence similarities Belongs to the ATP:guanido phosphotransferase family.
Contains 1 phosphagen kinase C-terminal domain.
Contains 1 phosphagen kinase N-terminal domain.

Cellular localization Cytoplasm.

Images



All lanes : Anti-Creatine Kinase MM antibody (ab174672) at 0.03 µg/ml

Lane 1 : Human heart lysate (in RIPA buffer)

Lane 2 : Mouse heart lysate (in RIPA buffer)

Lysates/proteins at 35 µg per lane.

Developed using the ECL technique.

Predicted band size: 43 kDa

Observed band size: 45 kDa

[why is the actual band size different from the predicted?](#)

Primary incubation was 1 hour.

Please note: All products are "FOR RESEARCH USE ONLY. NOT FOR USE IN DIAGNOSTIC PROCEDURES"

Our Abpromise to you: Quality guaranteed and expert technical support

- Replacement or refund for products not performing as stated on the datasheet

- Valid for 12 months from date of delivery
- Response to your inquiry within 24 hours

- We provide support in Chinese, English, French, German, Japanese and Spanish
- Extensive multi-media technical resources to help you
- We investigate all quality concerns to ensure our products perform to the highest standards

If the product does not perform as described on this datasheet, we will offer a refund or replacement. For full details of the Abpromise, please visit <https://www.abcam.com/abpromise> or contact our technical team.

Terms and conditions

- Guarantee only valid for products bought direct from Abcam or one of our authorized distributors