


Product datasheet

Anti-Creatine Kinase MM antibody (HRP) ab193292

1 Image

Overview

Product name	Anti-Creatine Kinase MM antibody (HRP)
Description	Rabbit polyclonal to Creatine Kinase MM (HRP)
Host species	Rabbit
Conjugation	HRP
Tested applications	Suitable for: WB, IHC-P, ELISA
Species reactivity	Reacts with: Human Predicted to work with: Mouse, Rat, Rabbit, Chicken, Cow, Dog, Pig 

Immunogen

Recombinant full length protein corresponding to Human Creatine Kinase MM aa 1-381.
Sequence:

```

MPFGNTHNKFKLNYKPEEEYPDLSKHNNHMAKVL TLE
LYKKLRDKETPSG
FTVDDVIQTGVDNPGHPFIMTVGCVAGDEESYEVFKE
LFDPIISDRHGGY
KPTDKHKTDLNHENLKGDDLDPNWLSSRVRTGRSI
KGYTLPPHCSRGE
RRAVEKLSVEALNSLTGEFKGKYPLKSMTEKEQQQLI
DDHFLFDKPVSP
LLASGMARDWPDARGIWHNDNKSFLVWVNEEDHLR
VISMEKGGNMKEVF
RRFCVGLQKIEEIFKKAGHPFMWNQHLGYVLTCP SNL
GTGLRGGVHVKLA
HLSKHPKFEEILTRLRLQKRGTGGVD TAAVGSVFDVS
NADRLGSSEVEQV
QLVVDGVKLMVEMEKKLEKQSIDDMIPAQK
    
```

Database link: [P06732](#)

 [Run BLAST with](#)

 [Run BLAST with](#)

Positive control

293T whole cell lysate ([ab95494](#)) can be used as a positive control in WB.

Properties

Form Liquid

Storage instructions	Shipped at 4°C. Store at +4°C.
Storage buffer	pH: 7.4 Preservative: 0.03% Proclin Constituents: 50% Glycerol, 49% PBS
Purity	Caprylic Acid - Ammonium Sulfate precipitation
Clonality	Polyclonal
Isotype	IgG

Applications

Our [Abpromise guarantee](#) covers the use of **ab193292** in the following tested applications.

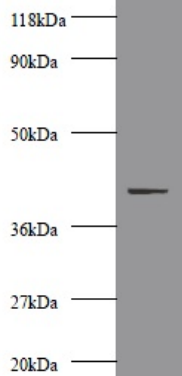
The application notes include recommended starting dilutions; optimal dilutions/concentrations should be determined by the end user.

Application	Abreviews	Notes
WB		Use at an assay dependent concentration. Detects a band of approximately 42 kDa (predicted molecular weight: 43 kDa).
IHC-P		Use at an assay dependent concentration.
ELISA		Use at an assay dependent concentration.

Target

Function	Reversibly catalyzes the transfer of phosphate between ATP and various phosphagens (e.g. creatine phosphate). Creatine kinase isoenzymes play a central role in energy transduction in tissues with large, fluctuating energy demands, such as skeletal muscle, heart, brain and spermatozoa.
Sequence similarities	Belongs to the ATP:guanido phosphotransferase family. Contains 1 phosphagen kinase C-terminal domain. Contains 1 phosphagen kinase N-terminal domain.
Cellular localization	Cytoplasm.

Images



Western blot - Anti-Creatine Kinase MM antibody (HRP) (ab193292)

Anti-Creatine Kinase MM antibody (HRP) (ab193292) at 2 µg/ml + 293T whole cell lysate

Secondary

Goat polyclonal to Rabbit IgG at 1/10000 dilution

Predicted band size: 43 kDa

Additional bands at: 42 kDa. We are unsure as to the identity of these extra bands.

Please note: All products are "FOR RESEARCH USE ONLY. NOT FOR USE IN DIAGNOSTIC PROCEDURES"

Our Promise to you: Quality guaranteed and expert technical support

- Replacement or refund for products not performing as stated on the datasheet
- Valid for 12 months from date of delivery
- Response to your inquiry within 24 hours
- We provide support in Chinese, English, French, German, Japanese and Spanish
- Extensive multi-media technical resources to help you
- We investigate all quality concerns to ensure our products perform to the highest standards

If the product does not perform as described on this datasheet, we will offer a refund or replacement. For full details of the Abpromise, please visit <https://www.abcam.com/abpromise> or contact our technical team.

Terms and conditions

- Guarantee only valid for products bought direct from Abcam or one of our authorized distributors