

Product datasheet

Anti-Creatine Kinase MM antibody [ZM-1] ab170173

2 Images

Overview

|                            |  |
|----------------------------|--|
| <b>Product name</b>        | Anti-Creatine Kinase MM antibody [ZM-1]  |
| <b>Description</b>         | Mouse monoclonal [ZM-1] to Creatine Kinase MM  |
| <b>Host species</b>        | Mouse  |
| <b>Tested applications</b> | <b>Suitable for:</b> IP, WB  |
| <b>Species reactivity</b>  | <b>Reacts with:</b> Zebrafish<br><b>Does not react with:</b> Mouse, Rat, Cow, Human  |
| <b>Immunogen</b>           | Other Immunogen Type. This information is considered to be commercially sensitive.   |
| <b>Positive control</b>    | Zebrafish Skeletal Muscle Homogenate.  |
| <b>General notes</b>       | <p>This antibody clone is manufactured by Abcam.</p> <p>Product was previously marketed under the MitoSciences sub-brand.</p> <p>If you require this antibody in a particular buffer formulation or a particular conjugate for your experiments, please contact <a href="mailto:orders@abcam.com">orders@abcam.com</a> or you can find further information <a href="#">here</a>.</p> <p>The Life Science industry has been in the grips of a reproducibility crisis for a number of years. Abcam is leading the way in addressing this with our range of recombinant monoclonal antibodies and knockout edited cell lines for gold-standard validation. Please check that this product meets your needs before purchasing.</p> <p>If you have any questions, special requirements or concerns, please send us an inquiry and/or contact our Support team ahead of purchase. Recommended alternatives for this product can be found below, along with publications, customer reviews and Q&amp;As</p> |

Properties

|                             |   |
|-----------------------------|---|
| <b>Form</b>                 | Liquid  |
| <b>Storage instructions</b> | Shipped at 4°C. Store at +4°C short term (1-2 weeks). Upon delivery aliquot. Store at -20°C long term. Avoid freeze / thaw cycle. |
| <b>Storage buffer</b>       | Preservative: 0.02% Sodium azide<br>Constituent: 99% HEPES buffered saline  |
| <b>Purity</b>               | SDS-PAGE  |
| <b>Clonality</b>            | Monoclonal  |
| <b>Clone number</b>         | ZM-1  |

|                         |       |
|-------------------------|-------|
| <b>Isotype</b>          | IgG1  |
| <b>Light chain type</b> | kappa |

## Applications

**The Abpromise guarantee** Our [Abpromise guarantee](#) covers the use of ab170173 in the following tested applications. The application notes include recommended starting dilutions; optimal dilutions/concentrations should be determined by the end user.

| Application | Abreviews | Notes   |
|-------------|-----------|---|
| <b>IP</b>   |           | Use at an assay dependent concentration.                            |
| <b>WB</b>   |           | Use a concentration of 1 µg/ml. Predicted molecular weight: 43 kDa. |

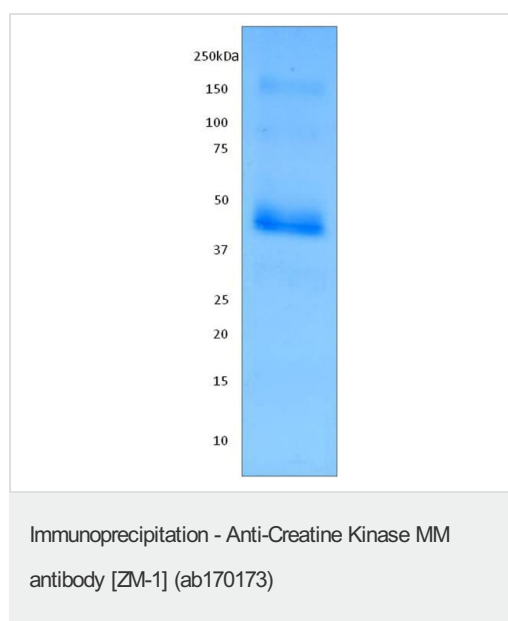
## Target

**Function** Reversibly catalyzes the transfer of phosphate between ATP and various phosphagens (e.g. creatine phosphate). Creatine kinase isoenzymes play a central role in energy transduction in tissues with large, fluctuating energy demands, such as skeletal muscle, heart, brain and spermatozoa.

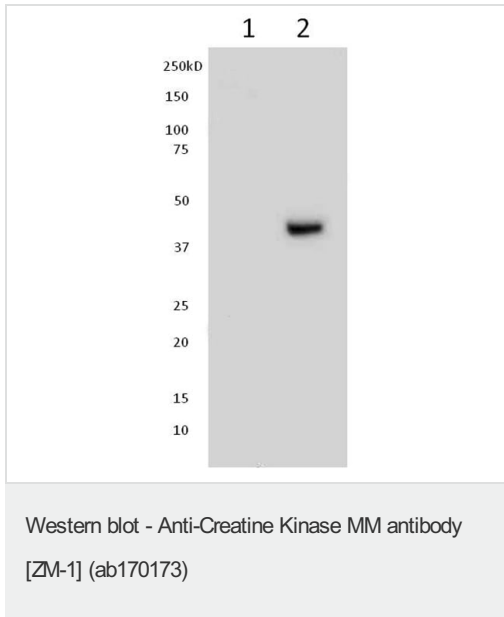
**Sequence similarities** Belongs to the ATP:guanido phosphotransferase family.  
Contains 1 phosphagen kinase C-terminal domain.  
Contains 1 phosphagen kinase N-terminal domain.

**Cellular localization** Cytoplasm.

## Images



Immunoprecipitation for Creatine Kinase MM (ZM-1) antibody.  
ab170173 conjugated to Protein-G-Beads, used at 20 µg antibody per 10 µL of beads. Immunoprecipitated from 1 mg Zebrafish Skeletal Muscle Homogenate Lysate. 25 µL eluate was loaded onto the gel.  
Stained with Colloidal Coomassie Blue



**All lanes :** Anti-Creatine Kinase MM antibody [ZM-1] (ab170173)  
at 0.5 µg/ml

**Lane 1 :** ZBH (Zebrafish Brain Homogenate) Lysate

**Lane 2 :** (Zebrafish Skeletal Muscle Homogenate) Lysate

Lysates/proteins at 15 µg per lane.

**Secondary**

**All lanes :** Goat polyclonal to Mouse IgG –HRP at 1/2000 dilution

**Predicted band size:** 43 kDa

**Please note:** All products are "FOR RESEARCH USE ONLY. NOT FOR USE IN DIAGNOSTIC PROCEDURES"

**Our Abpromise to you: Quality guaranteed and expert technical support**

- Replacement or refund for products not performing as stated on the datasheet
- Valid for 12 months from date of delivery
- Response to your inquiry within 24 hours
- We provide support in Chinese, English, French, German, Japanese and Spanish
- Extensive multi-media technical resources to help you
- We investigate all quality concerns to ensure our products perform to the highest standards

If the product does not perform as described on this datasheet, we will offer a refund or replacement. For full details of the Abpromise, please visit <https://www.abcam.com/abpromise> or contact our technical team.

**Terms and conditions**

- Guarantee only valid for products bought direct from Abcam or one of our authorized distributors