

Product datasheet

Anti-Creatine Kinase MM antibody [ZM-2] ab170174

2 Images

Overview

Product name	Anti-Creatine Kinase MM antibody [ZM-2]
Description	Mouse monoclonal [ZM-2] to Creatine Kinase MM
Host species	Mouse
Tested applications	Suitable for: IHC-P, WB, IP
Species reactivity	Reacts with: Zebrafish Does not react with: Mouse, Rat, Cow, Human
Immunogen	Tissue, cells or virus corresponding to Zebrafish Creatine Kinase MM. Zebrafish Organism. Database link: Q9PV91
Positive control	Zebrafish Skeletal Muscle Homogenate.
General notes	This antibody clone is manufactured by Abcam. Product was previously marketed under the MitoSciences sub-brand. If you require this antibody in a particular buffer formulation or a particular conjugate for your experiments, please contact orders@abcam.com or you can find further information here .

Properties

Form	Liquid
Storage instructions	Shipped at 4°C. Store at +4°C short term (1-2 weeks). Upon delivery aliquot. Store at -20°C long term. Avoid freeze / thaw cycle.
Storage buffer	Preservative: 0.02% Sodium azide Constituent: 99% HEPES buffered saline
Purity	SDS-PAGE
Clonality	Monoclonal
Clone number	ZM-2
Isotype	IgG1
Light chain type	kappa

Applications

Our [Abpromise guarantee](#) covers the use of **ab170174** in the following tested applications.

The application notes include recommended starting dilutions; optimal dilutions/concentrations should be determined by the end user.

Application	Abreviews	Notes
IHC-P		Use at an assay dependent concentration.
WB		Use a concentration of 1 µg/ml. Predicted molecular weight: 43 kDa.
IP		Use at an assay dependent concentration.

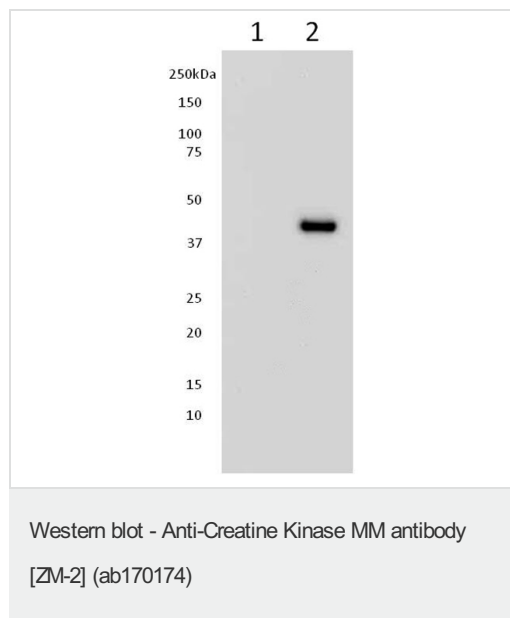
Target

Function Reversibly catalyzes the transfer of phosphate between ATP and various phosphogens (e.g. creatine phosphate). Creatine kinase isoenzymes play a central role in energy transduction in tissues with large, fluctuating energy demands, such as skeletal muscle, heart, brain and spermatozoa.

Sequence similarities Belongs to the ATP:guanido phosphotransferase family.
Contains 1 phosphagen kinase C-terminal domain.
Contains 1 phosphagen kinase N-terminal domain.

Cellular localization Cytoplasm.

Images



All lanes : Anti-Creatine Kinase MM antibody [ZM-2] (ab170174)
at 1 µg/ml

Lane 1 : ZBH (Zebrafish Brain Homogenate) Lysate

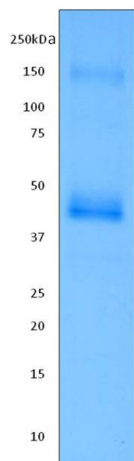
Lane 2 : ZSkMH (Zebrafish Skeletal Muscle Homogenate) Lysate

Lysates/proteins at 15 µg per lane.

Secondary

All lanes : Goat polyclonal to Mouse IgG – HRP at 1/2000 dilution

Predicted band size: 43 kDa



Immunoprecipitation - Anti-Creatine Kinase MM antibody [ZM-2] (ab170174)

Immunoprecipitation for Creatine Kinase MM (ZM-2) antibody.

ab170174 conjugated to Protein-G-Beads used at 20 µg antibody per 10 µL of beads. Immunoprecipitated from 1 mg Zebrafish Skeletal Muscle Homogenate Lysate. 25µL eluate was loaded onto gel.

Stained with Colloidal Coomassie Blue.

Please note: All products are "FOR RESEARCH USE ONLY AND ARE NOT INTENDED FOR DIAGNOSTIC OR THERAPEUTIC USE"

Our Abpromise to you: Quality guaranteed and expert technical support

- Replacement or refund for products not performing as stated on the datasheet
- Valid for 12 months from date of delivery
- Response to your inquiry within 24 hours
- We provide support in Chinese, English, French, German, Japanese and Spanish
- Extensive multi-media technical resources to help you
- We investigate all quality concerns to ensure our products perform to the highest standards

If the product does not perform as described on this datasheet, we will offer a refund or replacement. For full details of the Abpromise, please visit <https://www.abcam.com/abpromise> or contact our technical team.

Terms and conditions

- Guarantee only valid for products bought direct from Abcam or one of our authorized distributors