

Product datasheet

Anti-CREB3L1/OASIS antibody ab137565

1 Image

Overview

Product name	Anti-CREB3L1/OASIS antibody
Description	Rabbit polyclonal to CREB3L1/OASIS
Host species	Rabbit
Tested applications	Suitable for: WB
Species reactivity	Reacts with: Human
Immunogen	Synthetic peptide corresponding to Human CREB3L1/OASIS aa 447-519 (C terminal).
Positive control	293T, A431, H1299, HeLa S3, HepG2, Molt 4, Raji whole cell lysates Paraformaldehyde fixed HCT116
General notes	<p>Keep as concentrated solution.</p> <p>Previously labelled as CREB3L1.</p> <p>Reproducibility is key to advancing scientific discovery and accelerating scientists' next breakthrough.</p> <p>Abcam is leading the way with our range of recombinant antibodies, knockout-validated antibodies and knockout cell lines, all of which support improved reproducibility.</p> <p>We are also planning to innovate the way in which we present recommended applications and species on our product datasheets, so that only applications & species that have been tested in our own labs, our suppliers or by selected trusted collaborators are covered by our Abpromise™ guarantee.</p> <p>In preparation for this, we have started to update the applications & species that this product is Abpromise guaranteed for.</p> <p>We are also updating the applications & species that this product has been "predicted to work with," however this information is not covered by our Abpromise guarantee.</p> <p>Applications & species from publications and Abreviews that have not been tested in our own labs or in those of our suppliers are not covered by the Abpromise guarantee.</p> <p>Please check that this product meets your needs before purchasing. If you have any questions, special requirements or concerns, please send us an inquiry and/or contact our Support team ahead of purchase. Recommended alternatives for this product can be found below, as well as customer reviews and Q&As.</p>

Properties

Form	Liquid
Storage instructions	Shipped at 4°C. Upon delivery aliquot and store at -20°C or -80°C. Avoid repeated freeze / thaw cycles.
Storage buffer	pH: 7.00 Preservative: 0.01% Thimerosal (merthiolate) Constituents: 89.99% PBS, 10% Glycerol (glycerin, glycerine)
Purity	Immunogen affinity purified
Clonality	Polyclonal
Isotype	IgG

Applications

Our [Abpromise guarantee](#) covers the use of **ab137565** in the following tested applications.

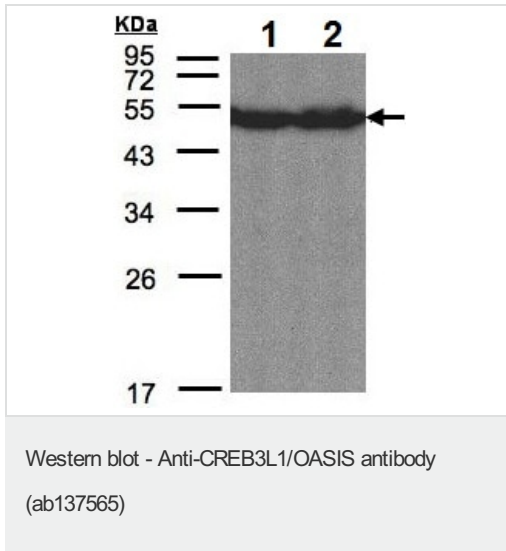
The application notes include recommended starting dilutions; optimal dilutions/concentrations should be determined by the end user.

Application	Abreviews	Notes
WB		1/500 - 1/3000. Predicted molecular weight: 57 kDa.

Target

Function	Transcription factor that acts during endoplasmic reticulum stress by activating unfolded protein response target genes. Specifically involved in ER-stress response in astrocytes in the central nervous system (By similarity). May play a role in gliosis. In vitro, binds to box-B element, cAMP response element (CRE) and CRE-like sequences, and activates transcription through box-B element but not through CRE.
Tissue specificity	Ubiquitously expressed with high levels in pancreas and prostate. Expressed at relatively lower levels in brain.
Sequence similarities	Belongs to the bZIP family. ATF subfamily. Contains 1 bZIP domain.
Post-translational modifications	Controlled by regulated intramembrane proteolysis (RIP). Following ER stress a fragment containing the cytoplasmic transcription factor domain is released by proteolysis. The cleavage is performed sequentially by site-1 and site-2 proteases (PS1 and PS2) and is triggered by translocation to the Golgi apparatus.
Cellular localization	Endoplasmic reticulum membrane and Nucleus. Under ER stress the cleaved N-terminal cytoplasmic domain translocates into the nucleus.

Images



All lanes : Anti-CREB3L1/OASIS antibody (ab137565) at 1/1500 dilution

Lane 1 : HepG2 whole cell lysate

Lane 2 : Molt 4 whole cell lysate

Lysates/proteins at 30 µg per lane.

Predicted band size: 57 kDa

12% SDS PAGE

Please note: All products are "FOR RESEARCH USE ONLY. NOT FOR USE IN DIAGNOSTIC PROCEDURES"

Our Abpromise to you: Quality guaranteed and expert technical support

- Replacement or refund for products not performing as stated on the datasheet
- Valid for 12 months from date of delivery
- Response to your inquiry within 24 hours
- We provide support in Chinese, English, French, German, Japanese and Spanish
- Extensive multi-media technical resources to help you
- We investigate all quality concerns to ensure our products perform to the highest standards

If the product does not perform as described on this datasheet, we will offer a refund or replacement. For full details of the Abpromise, please visit <https://www.abcam.com/abpromise> or contact our technical team.

Terms and conditions

- Guarantee only valid for products bought direct from Abcam or one of our authorized distributors