

Product datasheet

Anti-CRF1/CRHR1 antibody ab229585

3 Images

Overview

Product name	Anti-CRF1/CRHR1 antibody
Description	Rabbit polyclonal to CRF1/CRHR1
Host species	Rabbit
Tested applications	Suitable for: WB
Species reactivity	Reacts with: Mouse, Rat, Human
Immunogen	Full length protein within Human CRF1/CRHR1. The exact sequence is proprietary. Database link: P34998
Positive control	WB: U-87 MG whole cell and membrane extracts; Mouse and rat brain tissue extracts.
General notes	This product was previously labelled as CRF1

Properties

Form	Liquid
Storage instructions	Shipped at 4°C. Store at +4°C short term (1-2 weeks). Upon delivery aliquot. Store at -20°C long term. Avoid freeze / thaw cycle.
Storage buffer	pH: 7.00 Preservative: 0.025% Proclin Constituents: PBS, 20% Glycerol
Purity	Immunogen affinity purified
Clonality	Polyclonal
Isotype	IgG

Applications

Our [Abpromise guarantee](#) covers the use of **ab229585** in the following tested applications.

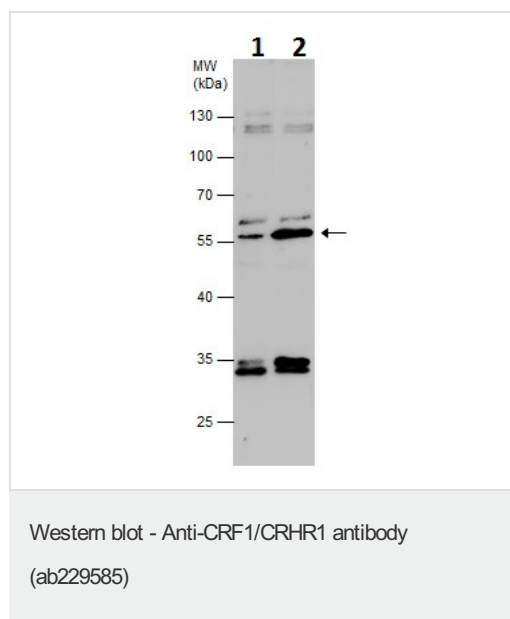
The application notes include recommended starting dilutions; optimal dilutions/concentrations should be determined by the end user.

Application	Abreviews	Notes
WB		1/500 - 1/3000.

Target

Function	This is a receptor for corticotropin releasing factor. Shows high-affinity CRF binding. The activity of this receptor is mediated by G proteins which activate adenylyl cyclase.
Tissue specificity	Predominantly expressed in the cerebellum, pituitary, cerebral cortex and olfactory lobe.
Sequence similarities	Belongs to the G-protein coupled receptor 2 family.
Post-translational modifications	C-terminal Ser or Thr residues may be phosphorylated.
Cellular localization	Cell membrane.

Images



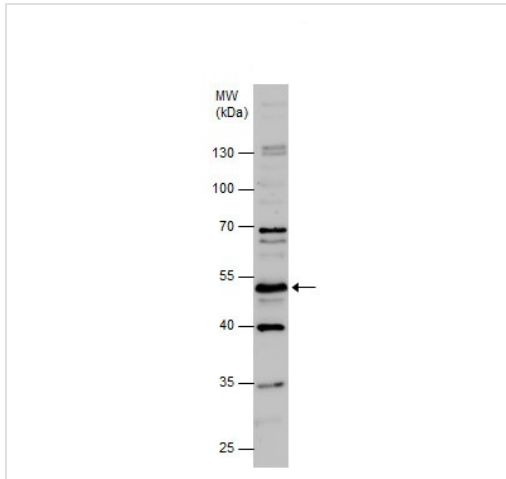
All lanes : Anti-CRF1/CRHR1 antibody (ab229585) at 1/1000 dilution

Lane 1 : U-87 MG (human glioblastoma-astrocytoma epithelial cell line) whole cell extract

Lane 2 : U-87 MG (human glioblastoma-astrocytoma epithelial cell line) membrane extract

Lysates/proteins at 30 µg per lane.

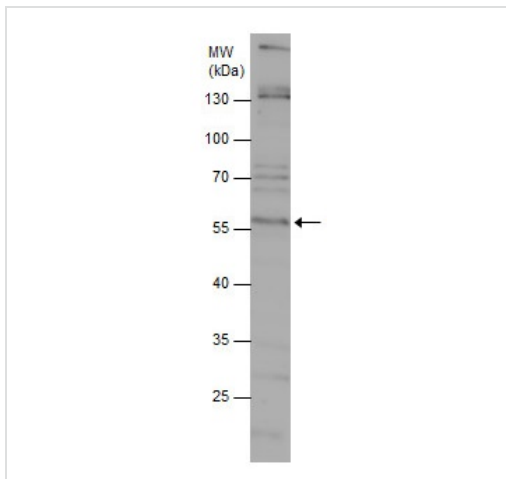
10% SDS-PAGE gel.



Western blot - Anti-CRF1/CRHR1 antibody
(ab229585)

Anti-CRF1/CRHR1 antibody (ab229585) at 1/1000 dilution + Rat
brain tissue extract at 50 µg

10% SDS-PAGE gel.



Western blot - Anti-CRF1/CRHR1 antibody
(ab229585)

Anti-CRF1/CRHR1 antibody (ab229585) at 1/1000 dilution +
Mouse brain tissue extract at 50 µg

10% SDS-PAGE gel.

Please note: All products are "FOR RESEARCH USE ONLY. NOT FOR USE IN DIAGNOSTIC PROCEDURES"

Our Abpromise to you: Quality guaranteed and expert technical support

- Replacement or refund for products not performing as stated on the datasheet
- Valid for 12 months from date of delivery
- Response to your inquiry within 24 hours
- We provide support in Chinese, English, French, German, Japanese and Spanish
- Extensive multi-media technical resources to help you
- We investigate all quality concerns to ensure our products perform to the highest standards

If the product does not perform as described on this datasheet, we will offer a refund or replacement. For full details of the Abpromise, please visit <https://www.abcam.com/abpromise> or contact our technical team.

Terms and conditions

- Guarantee only valid for products bought direct from Abcam or one of our authorized distributors