

Product datasheet

Anti-CRF1/CRHR1 antibody ab59023

★★★★☆ 5 Abreviews 13 References 2 Images

Overview

Product name	Anti-CRF1/CRHR1 antibody
Description	Goat polyclonal to CRF1/CRHR1
Host species	Goat
Tested applications	Suitable for: IHC-P, ELISA, WB
Species reactivity	Reacts with: Mouse Predicted to work with: Rat, Sheep, Chicken, Human, Pufferfish, Rhesus monkey, African green monkey, Syrian hamster
Immunogen	Synthetic peptide corresponding to Human CRF1/CRHR1 aa 279-292 (internal sequence) (Cysteine residue). Synthetic peptide: KLYYDNEKCWFGKR by a Cysteine residue linker, corresponding to internal sequence amino acids 279-292 of Human CRF1/CRHR1 (Peptide available as ab113546). Sequence: KLYYDNEKCWFGKR (Peptide available as ab113546) Run BLAST with Run BLAST with
General notes	This product was previously labelled as CRF1

Reproducibility is key to advancing scientific discovery and accelerating scientists' next breakthrough.

Abcam is leading the way with our range of recombinant antibodies, knockout-validated antibodies and knockout cell lines, all of which support improved reproducibility.

We are also planning to innovate the way in which we present recommended applications and species on our product datasheets, so that only applications & species that have been tested in our own labs, our suppliers or by selected trusted collaborators are covered by our Abpromise™ guarantee.

In preparation for this, we have started to update the applications & species that this product is Abpromise guaranteed for.

We are also updating the applications & species that this product has been “predicted to work with,” however this information is not covered by our Abpromise guarantee.

Applications & species from publications and Abreviews that have not been tested in our own labs or in those of our suppliers are not covered by the Abpromise guarantee.

Please check that this product meets your needs before purchasing. If you have any questions, special requirements or concerns, please send us an inquiry and/or contact our Support team ahead of purchase. Recommended alternatives for this product can be found below, as well as customer reviews and Q&As.

Properties

Form	Liquid
Storage instructions	Shipped at 4°C. Upon delivery aliquot and store at -20°C. Avoid freeze / thaw cycles.
Storage buffer	pH: 7.30 Preservative: 0.02% Sodium azide Constituents: Tris buffered saline, 0.5% BSA
Purity	Immunogen affinity purified
Purification notes	Purified from goat serum by ammonium sulphate precipitation followed by antigen affinity chromatography using the immunizing peptide.
Clonality	Polyclonal
Isotype	IgG

Applications

Our [Abpromise guarantee](#) covers the use of **ab59023** in the following tested applications.

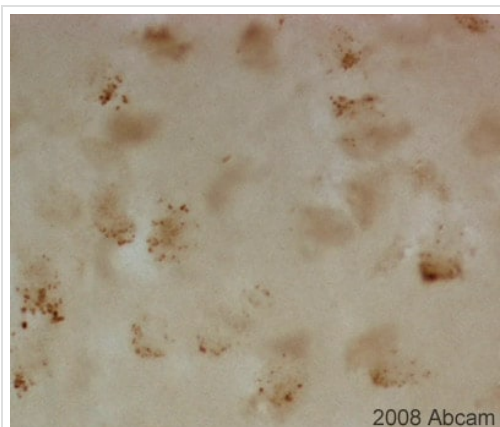
The application notes include recommended starting dilutions; optimal dilutions/concentrations should be determined by the end user.

Application	Abreviews	Notes
IHC-P	★★★★☆	1/100.
ELISA		1/16000. (Peptide)
WB	★★★★☆	Use a concentration of 1 - 2 µg/ml. Detects a band of approximately 50 kDa (predicted molecular weight: 50 kDa). A 1 hour primary incubation is recommended for this product.

Target

Function	This is a receptor for corticotropin releasing factor. Shows high-affinity CRF binding. The activity of this receptor is mediated by G proteins which activate adenylyl cyclase.
Tissue specificity	Predominantly expressed in the cerebellum, pituitary, cerebral cortex and olfactory lobe.
Sequence similarities	Belongs to the G-protein coupled receptor 2 family.
Post-translational modifications	C-terminal Ser or Thr residues may be phosphorylated.
Cellular localization	Cell membrane.

Images



Immunohistochemistry (Formalin/PFA-fixed paraffin-embedded sections) - Anti-CRF1/CRHR1 antibody (ab59023)

This image is courtesy of an Abreview submitted by Dr Christoph Schwarzer

ab59023 (1/100) staining CRF1/CRHR1 in paraffin embedded mouse brain tissue sections. Tissues were fixed in paraformaldehyde and permeabilised with 0.3% Triton X100/TBS. Please refer to abreview for further experimental details.



Western blot - Anti-CRF1/CRHR1 antibody (ab59023)

All lanes : Anti-CRF1/CRHR1 antibody (ab59023) at 1 µg/ml

Lane 1 : Rat Forebrain

Lane 2 : Rat Cortex Tissue Lysate

Lane 3 : Cerebellum Rat Tissue Lysate

Lysates/proteins at 10 µg per lane.

Secondary

All lanes : Rabbit polyclonal to Goat IgG - H&L - Pre-Adsorbed (HRP) at 1/3000 dilution

Developed using the ECL technique.

Performed under reducing conditions.

Predicted band size: 50 kDa

Observed band size: 50 kDa

Additional bands at: 110 kDa, 70 kDa, 75 kDa. We are unsure as to the identity of these extra bands.

Exposure time: 8 minutes

Our Abpromise to you: Quality guaranteed and expert technical support

- Replacement or refund for products not performing as stated on the datasheet
- Valid for 12 months from date of delivery
- Response to your inquiry within 24 hours

- We provide support in Chinese, English, French, German, Japanese and Spanish
- Extensive multi-media technical resources to help you
- We investigate all quality concerns to ensure our products perform to the highest standards

If the product does not perform as described on this datasheet, we will offer a refund or replacement. For full details of the Abpromise, please visit <https://www.abcam.com/abpromise> or contact our technical team.

Terms and conditions

- Guarantee only valid for products bought direct from Abcam or one of our authorized distributors