

Product datasheet

Anti-CRF1/CRHR1 antibody - N-terminal ab230803

8 Images

Overview

Product name	Anti-CRF1/CRHR1 antibody - N-terminal
Description	Rabbit polyclonal to CRF1/CRHR1 - N-terminal
Host species	Rabbit
Specificity	BLAST analysis of the peptide immunogen showed no homology with other human proteins.
Tested applications	Suitable for: IHC-P
Species reactivity	Reacts with: Human Predicted to work with: Mouse, Rat, Horse, Hamster, Cow, Monkey ▲
Immunogen	Synthetic peptide corresponding to Human CRF1/CRHR1 (N terminal). (Extracellular domain). Database link: P34998
Positive control	IHC-P: Human brain amygdala, pituitary, brain glioblastoma, skin melanoma, lung non-small cell carcinoma, brain cerebellum (glia), testis and brain cortex tissues.
General notes	This product was previously labelled as CRF1

Reproducibility is key to advancing scientific discovery and accelerating scientists' next breakthrough.

Abcam is leading the way with our range of recombinant antibodies, knockout-validated antibodies and knockout cell lines, all of which support improved reproducibility.

We are also planning to innovate the way in which we present recommended applications and species on our product datasheets, so that only applications & species that have been tested in our own labs, our suppliers or by selected trusted collaborators are covered by our Abpromise™ guarantee.

In preparation for this, we have started to update the applications & species that this product is Abpromise guaranteed for.

We are also updating the applications & species that this product has been “predicted to work with,” however this information is not covered by our Abpromise guarantee.

Applications & species from publications and Abreviews that have not been tested in our own labs or in those of our suppliers are not covered by the Abpromise guarantee.

Please check that this product meets your needs before purchasing. If you have any questions, special requirements or concerns, please send us an inquiry and/or contact our Support team ahead of purchase. Recommended alternatives for this product can be found below, as well as customer reviews and Q&As.

Properties

Form	Liquid
Storage instructions	Shipped at 4°C. Store at +4°C short term (1-2 weeks). Upon delivery aliquot. Store at -20°C long term. Avoid freeze / thaw cycle.
Storage buffer	Preservative: 0.099% Sodium azide Constituent: PBS
Purity	Immunogen affinity purified
Clonality	Polyclonal
Isotype	IgG

Applications

Our [Abpromise guarantee](#) covers the use of **ab230803** in the following tested applications.

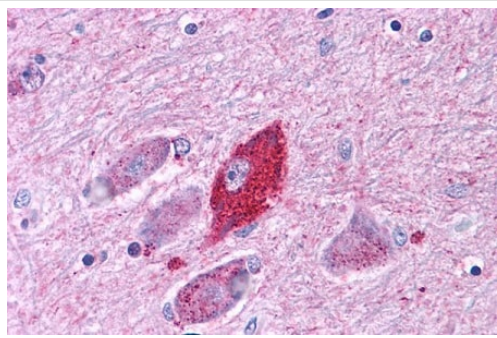
The application notes include recommended starting dilutions; optimal dilutions/concentrations should be determined by the end user.

Application	Abreviews	Notes
IHC-P		Use a concentration of 5 - 10 µg/ml. Perform heat mediated antigen retrieval before commencing with IHC staining protocol.

Target

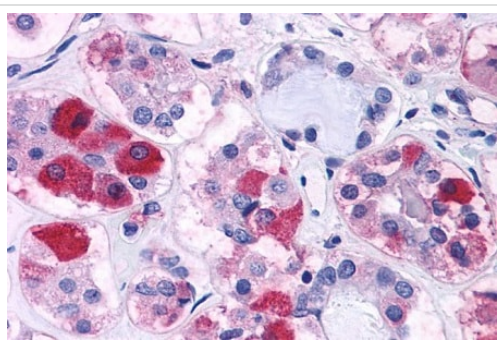
Function	This is a receptor for corticotropin releasing factor. Shows high-affinity CRF binding. The activity of this receptor is mediated by G proteins which activate adenylyl cyclase.
Tissue specificity	Predominantly expressed in the cerebellum, pituitary, cerebral cortex and olfactory lobe.
Sequence similarities	Belongs to the G-protein coupled receptor 2 family.
Post-translational modifications	C-terminal Ser or Thr residues may be phosphorylated.
Cellular localization	Cell membrane.

Images



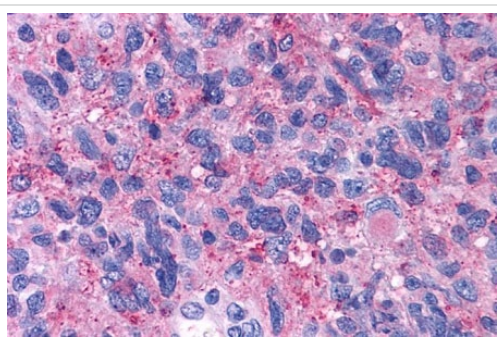
Immunohistochemistry (Formalin/PFA-fixed paraffin-embedded sections) - Anti-CRF1/CRHR1 antibody - N-terminal (ab230803)

Formalin-fixed, paraffin-embedded human brain amygdala tissue stained for CRF1/CRHR1 with ab230803 at 10 µg/ml in immunohistochemical analysis.



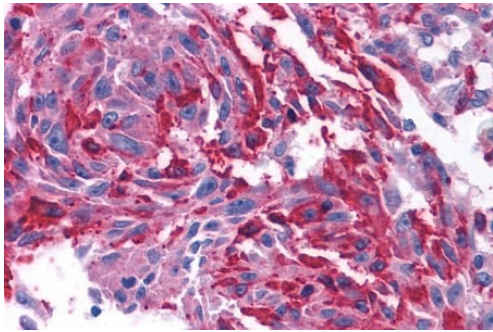
Immunohistochemistry (Formalin/PFA-fixed paraffin-embedded sections) - Anti-CRF1/CRHR1 antibody - N-terminal (ab230803)

Formalin-fixed, paraffin-embedded human pituitary tissue stained for CRF1/CRHR1 with ab230803 at 10 µg/ml in immunohistochemical analysis.



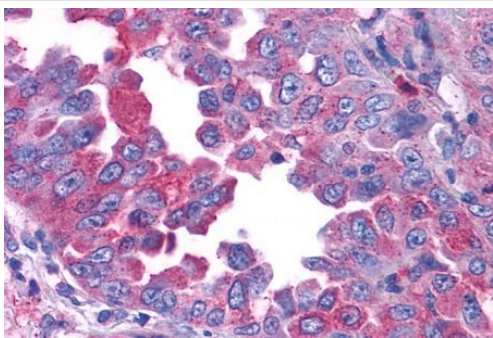
Immunohistochemistry (Formalin/PFA-fixed paraffin-embedded sections) - Anti-CRF1/CRHR1 antibody - N-terminal (ab230803)

Formalin-fixed, paraffin-embedded human brain glioblastoma tissue stained for CRF1/CRHR1 with ab230803 at 10 µg/ml in immunohistochemical analysis.



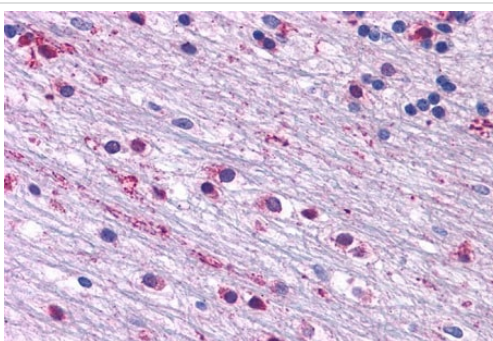
Immunohistochemistry (Formalin/PFA-fixed paraffin-embedded sections) - Anti-CRF1/CRHR1 antibody - N-terminal (ab230803)

Formalin-fixed, paraffin-embedded human skin melanoma tissue stained for CRF1/CRHR1 with ab230803 at 10 $\mu\text{g/ml}$ in immunohistochemical analysis.



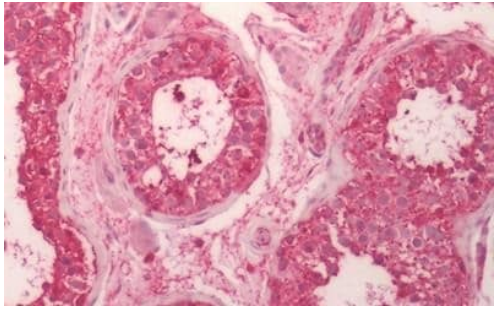
Immunohistochemistry (Formalin/PFA-fixed paraffin-embedded sections) - Anti-CRF1/CRHR1 antibody - N-terminal (ab230803)

Formalin-fixed, paraffin-embedded human lung non-small cell carcinoma tissue stained for CRF1/CRHR1 with ab230803 at 10 $\mu\text{g/ml}$ in immunohistochemical analysis.



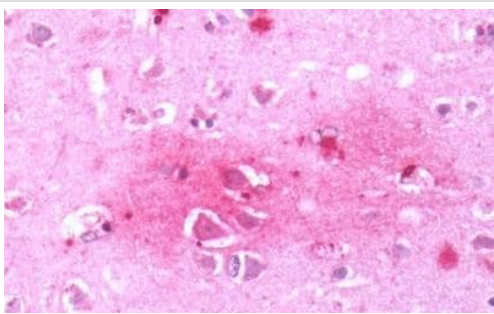
Immunohistochemistry (Formalin/PFA-fixed paraffin-embedded sections) - Anti-CRF1/CRHR1 antibody - N-terminal (ab230803)

Formalin-fixed, paraffin-embedded human brain cerebellum (glia) tissue stained for CRF1/CRHR1 with ab230803 at 10 $\mu\text{g/ml}$ in immunohistochemical analysis.



Immunohistochemistry (Formalin/PFA-fixed paraffin-embedded sections) - Anti-CRF1/CRHR1 antibody - N-terminal (ab230803)

Formalin-fixed, paraffin-embedded human testis tissue stained for CRF1/CRHR1 with ab230803 at 10 µg/ml in immunohistochemical analysis.



Immunohistochemistry (Formalin/PFA-fixed paraffin-embedded sections) - Anti-CRF1/CRHR1 antibody - N-terminal (ab230803)

Formalin-fixed, paraffin-embedded human brain cortex tissue stained for CRF1/CRHR1 with ab230803 at 10 µg/ml in immunohistochemical analysis.

Please note: All products are "FOR RESEARCH USE ONLY. NOT FOR USE IN DIAGNOSTIC PROCEDURES"

Our Abpromise to you: Quality guaranteed and expert technical support

- Replacement or refund for products not performing as stated on the datasheet
- Valid for 12 months from date of delivery
- Response to your inquiry within 24 hours
- We provide support in Chinese, English, French, German, Japanese and Spanish
- Extensive multi-media technical resources to help you
- We investigate all quality concerns to ensure our products perform to the highest standards

If the product does not perform as described on this datasheet, we will offer a refund or replacement. For full details of the Abpromise, please visit <https://www.abcam.com/abpromise> or contact our technical team.

Terms and conditions

- Guarantee only valid for products bought direct from Abcam or one of our authorized distributors